



Cochrane Road, SW19

£1,195,000

Dexters



Cochrane Road, SW19

A larger than average five bedroom, three bathroom bay-fronted Victorian house, occupying an enviable space within the Dundonald Primary School catchment area. The garden is south facing and the property is offered with no forward chain.

The ground floor is entered through a large entrance hallway with a cloakroom, leading to a large through reception room with superb high ceilings and a fireplace. The second half of the through reception room works perfectly as a dining room, play or music room.

The kitchen has already been extended to both the side and the rear and is complete with a utility room and bi-folding doors leading to the south facing rear garden.

The first floor has three double bedrooms and a generous family bathroom, with the loft converted to include two further bedrooms including the principal bedroom, complete with an en-suite shower room and eaves storage.

Cochrane Road is next to both Dundonald Primary School and Dundonald Park. Wimbledon Town Centre is just moments away with the district line tube, overground and an excellent choice of restaurants, bars and boutique shops.

Features

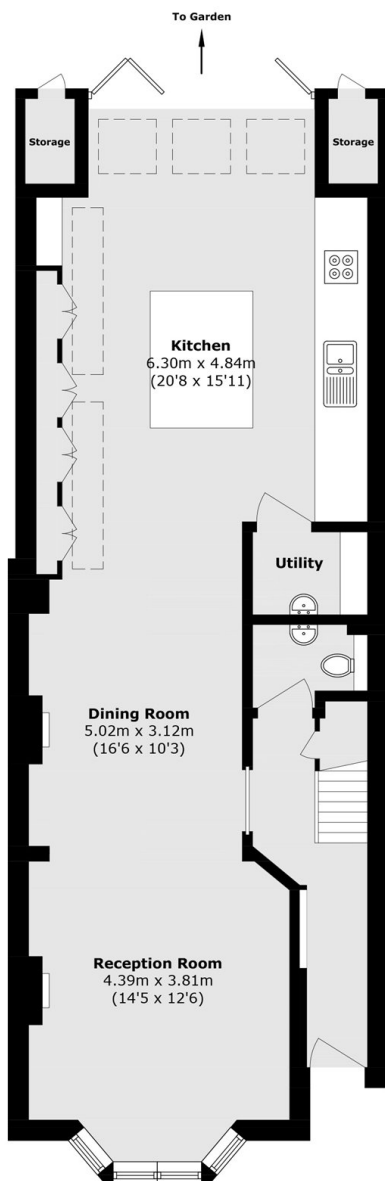
- Five Bedrooms
- Three Bathrooms
- Bay-Fronted Victorian House
- Cul De Sac
- South Facing Garden
- Outstanding Catchment Area



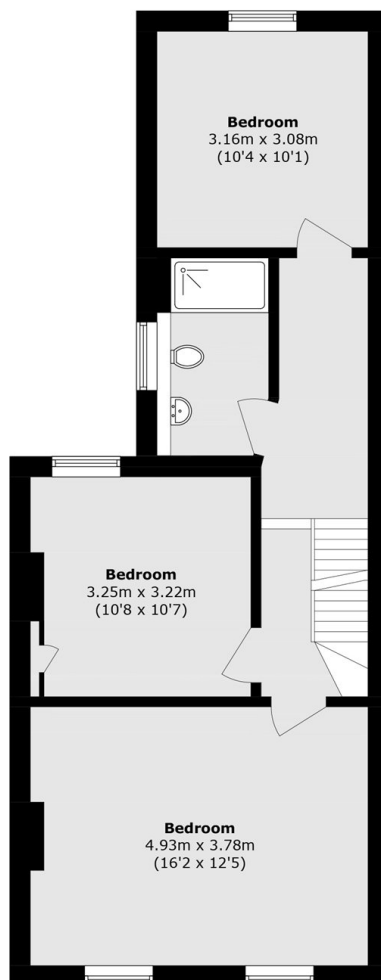




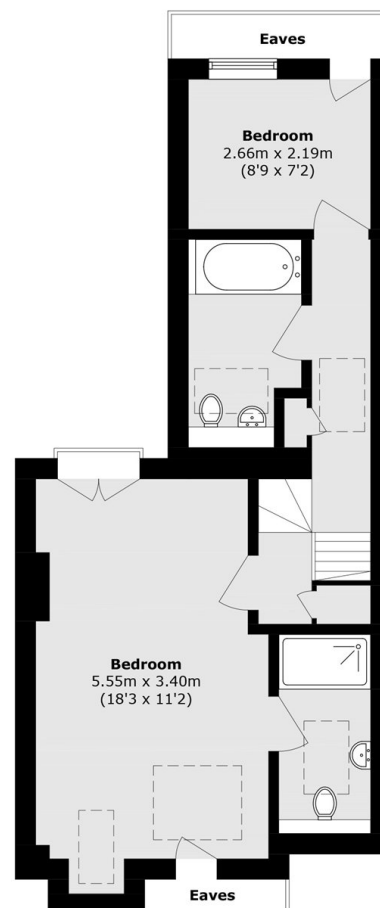
Cochrane Road, London, SW19



Ground Floor



First Floor



Second Floor

Total area (approx.): 168.4 sq. m (1812.7 sq. ft)
External Storage area (approx.): 2.1 sq. m (22.6 sq. ft)
(Excluding Eaves)