



56 Sappi Road, Glenrothes - KY7 6ZJ

Glenrothes

Offers Over **£195,000**





56 Sappi Road

Glenrothes, Glenrothes

Beautiful end-terrace villa with 2/3 car driveway, south-facing garden, 3 bedrooms (master en-suite), modern kitchen, close to Markinch Station and amenities. Move-in ready.
Council Tax band: D

Tenure: Freehold

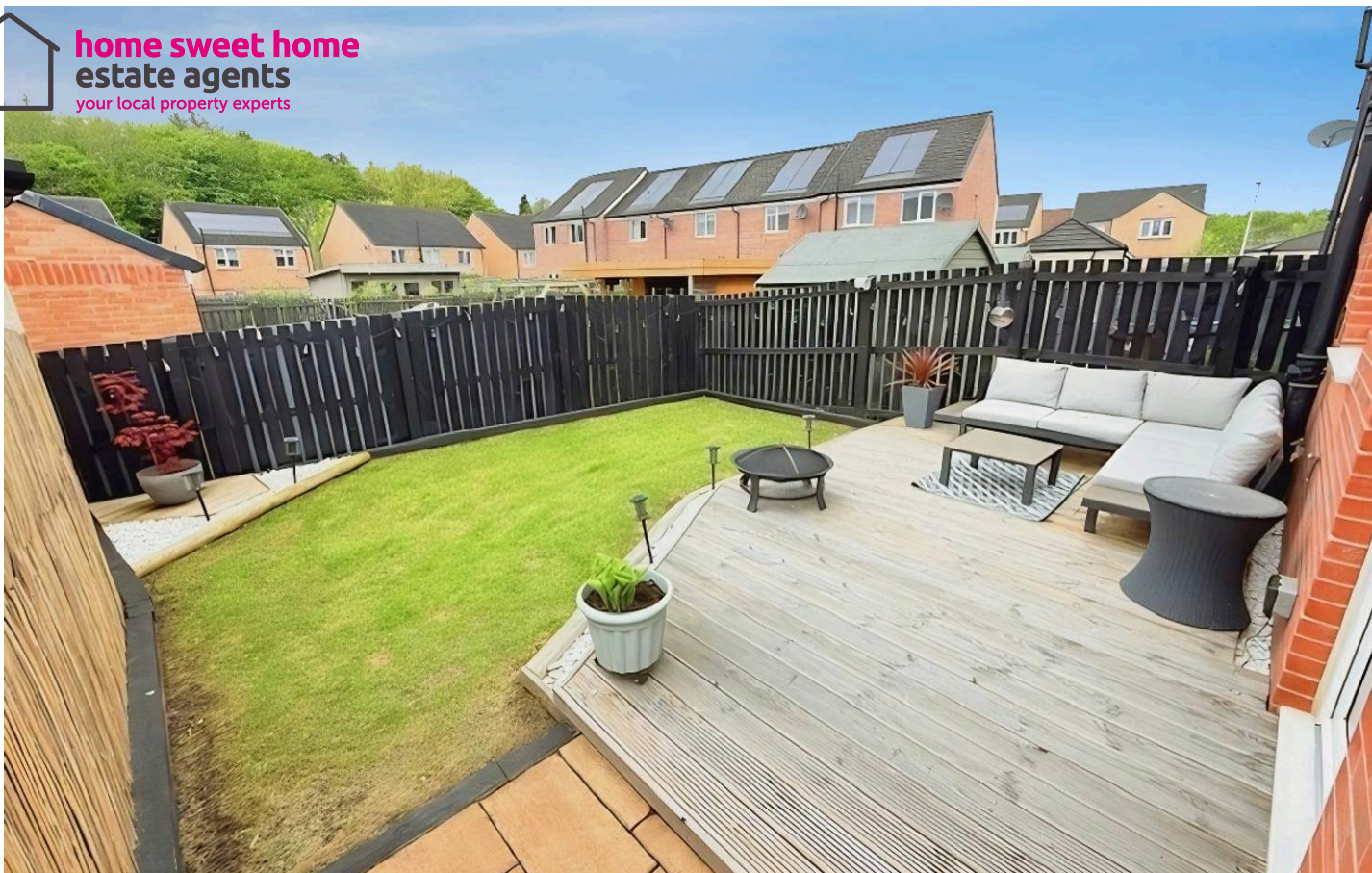
EPC Energy Efficiency Rating: C

EPC Environmental Impact Rating: B

- BEAUTIFUL MODERN END TERRACED VILLA
- 2/3 CAR DRIVE- SOUTH FACING GARDEN
- BRIGHT LOUNGE
- MODERN DINING KITCHEN
- THREE BEDROOMS MASTER EN-SUITE
- FAMILY BATHROOM - SEP WC
- DG- GCH - EPC C
- HOME REPORT £200,000
- MOVE IN CONDITION HOME
- FURNITURE MAY BE AVAILABLE BY SEPARATE NEGOTIATION



home sweet home
estate agents
your local property experts



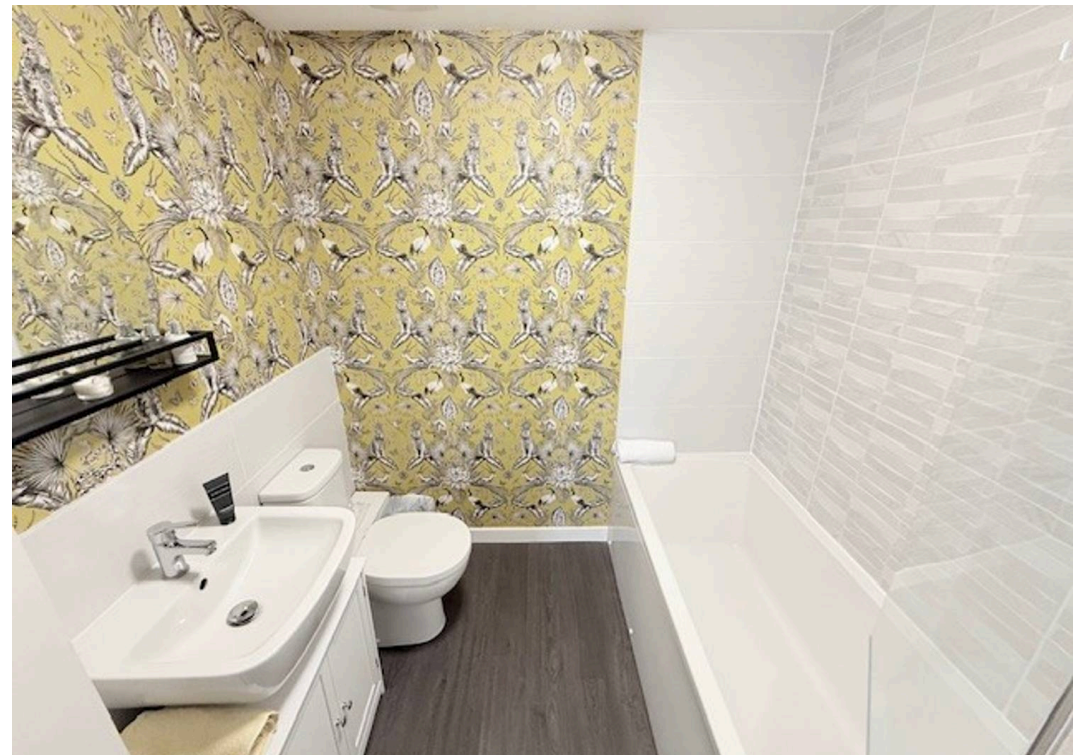
GARDEN

GARDENS TO FRONT, SIDE & REAR.

DRIVEWAY

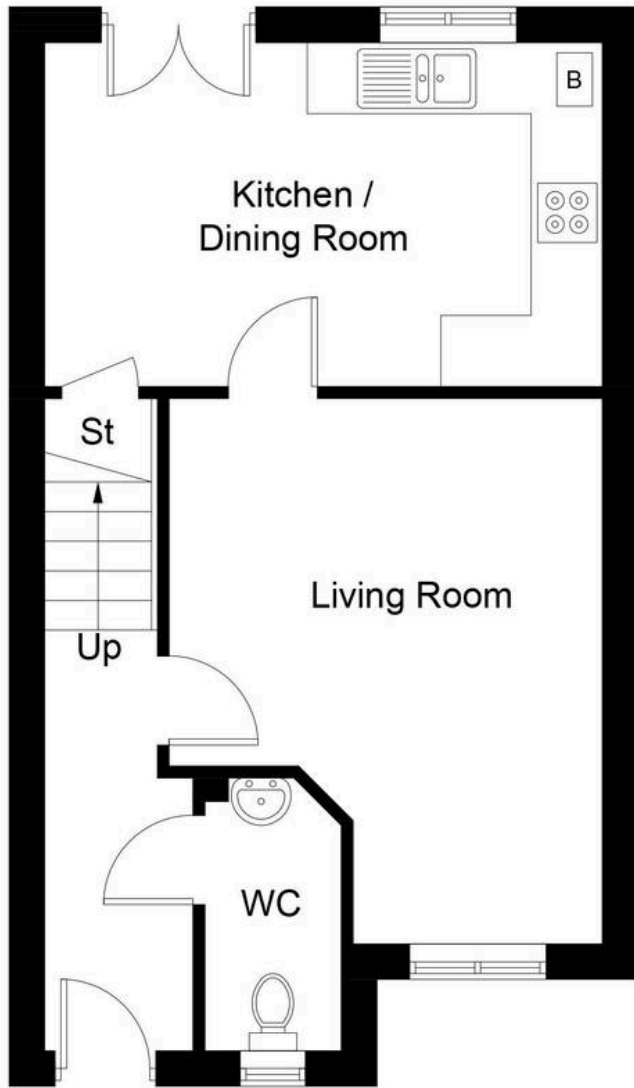
3 Parking Spaces



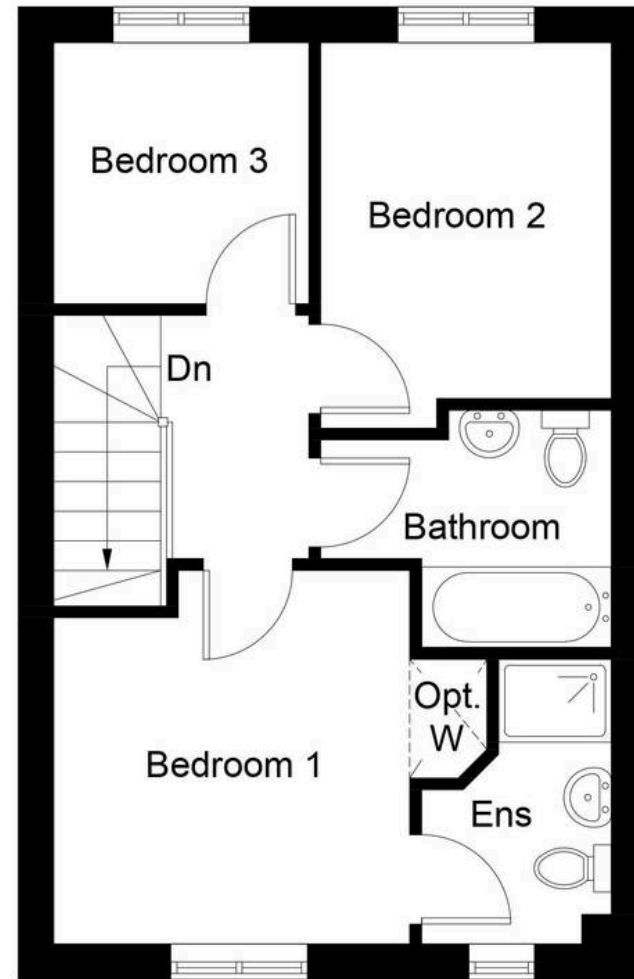


Energy Efficiency Rating		Current	Potential
<i>Very energy efficient - lower running costs</i>			
(92+)	A		
(81-91)	B		
(69-80)	C	80	80
(55-68)	D		
(39-54)	E		
(21-38)	F		
(1-20)	G		
<i>Not energy efficient - higher running costs</i>			
England, Scotland & Wales		EU Directive 2002/91/EC	

Environmental Impact (CO ₂) Rating		
	Current	Potential
<i>Very environmentally friendly - lower CO₂ emissions</i>		
(92+)	A	
(81-91)	B	
(69-80)	C	84
(55-68)	D	84
(39-54)	E	
(21-38)	F	
(1-20)	G	
<i>Not environmentally friendly - higher CO₂ emissions</i>		
England, Scotland & Wales		EU Directive 2002/91/EC



Ground Floor



First Floor

Illustration for identification purposes only, measurements are approximate, not to scale. Fourlabs.co © (ID1299097)



home sweet home
estate agents
 your local property experts