



Villa Dor Hara

8 Parkinson Drive



Villa Dor Hara, 8 Parkinson Drive, St Lawrence, JE3 1JX

New England Style Family home in St Lawrence

This striking three/four bedroom detached home blends timeless New England charm with modern family living. Ideally situated just minutes from both St Helier and the vibrant harbour village of St Aubin,

Step inside to discover beautifully designed interiors that strike a perfect balance between comfort and sophistication. The ground floor welcomes you with a bright entrance hallway leading into a generous living space that includes a cosy snug and a feature wood burning stove — ideal for family evenings or entertaining guests.

The heart of the home is the contemporary open plan kitchen and dining area, complete with sleek fittings and bi-fold doors that open seamlessly onto the sun soaked south facing garden. A separate utility room offers practicality and additional storage, catering effortlessly to everyday family life.

Upstairs, the property boasts three/four lovely bedrooms. The principal suite includes a stylish en-suite, while a modern family bathroom serves the remaining rooms. A stand out feature is the private south facing balcony, accessible from both the landing and fourth bedroom — the perfect spot to enjoy your morning coffee or evening sunset.

Outside, the home continues to impress with a beautifully landscaped garden, a double garage, and driveway space for up to four cars.

With its enviable location close to local beaches, countryside walks, and just a short drive from key amenities, this home delivers the best of Jersey living.

An exceptional family home in a prime location. Viewings are highly recommended.



3/4



2



1

Parish: St Lawrence

Qualification: Qualified

Tenure: Freehold

Price £790,000



- New England Style home
- 3/4 Bedrooms, 2 Bathrooms
- Beautifully designed interiors
- Close to beach and amenities
- South facing garden and balcony
- Double garage and parking for 4 cars









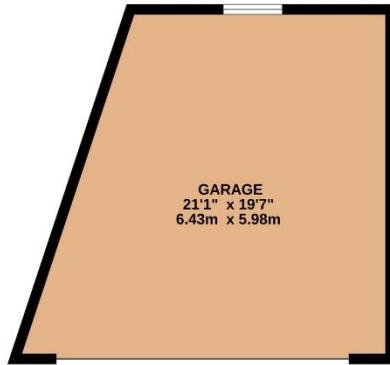




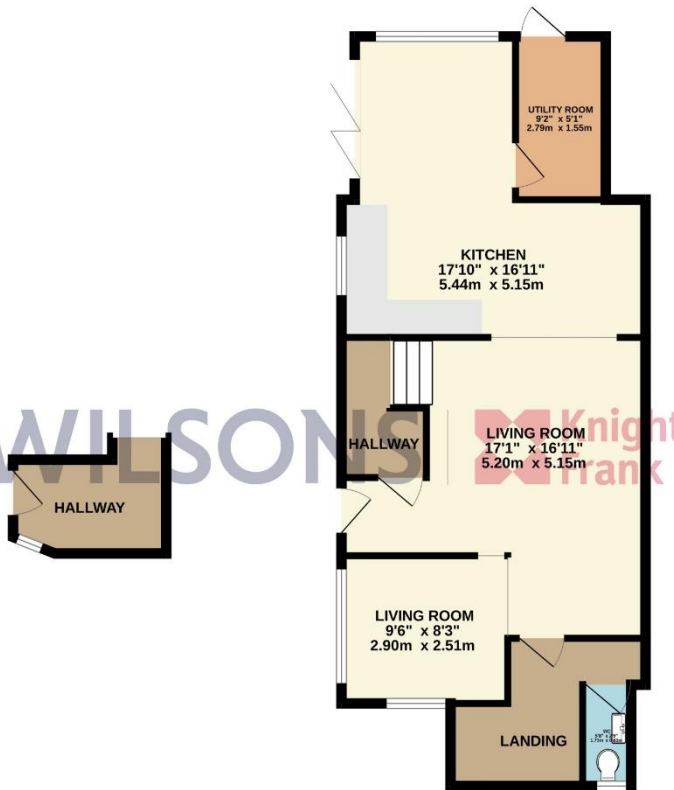




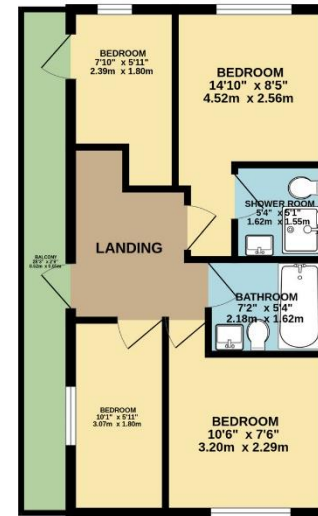
GROUND FLOOR
398 sq.ft. (36.9 sq.m.) approx.



1ST FLOOR
658 sq.ft. (61.1 sq.m.) approx.



2ND FLOOR
404 sq.ft. (37.5 sq.m.) approx.



TOTAL FLOOR AREA : 1459 sq.ft. (135.6 sq.m.) approx.

Whilst every attempt has been made to ensure the accuracy of the floorplan contained here, measurements of doors, windows, rooms and any other items are approximate and no responsibility is taken for any error, omission or mis-statement. This plan is for illustrative purposes only and should be used as such by any prospective purchaser. The services, systems and appliances shown have not been tested and no guarantee as to their operability or efficiency can be given.
Made with Metropix ©2025

This plan is for layout guidance only. Not drawn to scale unless stated. Windows and door openings are approximate. Whilst every care is taken in the preparation of this plan, please check all dimensions, shapes and compass bearings before making any decisions reliant upon them.

Services

Mains drains

Mains water

No gas

+441534 877977

Knight Frank Jersey

37-39 Halkett Place, St. Helier, Jersey JE2 4WG

knightfrank.je

Your partners in property

1. Particulars: These particulars are not an offer or contract, nor part of one. You should not rely on statements given by Knight Frank Jersey in the particulars, by word of mouth or in writing (“information”) as being factually accurate about the property, its condition or its value. Neither Knight Frank Jersey nor any joint agent has any authority to make any representations about the property, and accordingly any information given is entirely without responsibility on the part of Knight Frank Jersey. 2. Material Information: Please note that the material information is provided to Knight Frank Jersey by third parties and is provided here as a guide only. While Knight Frank Jersey has taken steps to verify this information, we advise you to confirm the details of any such material information prior to any offer being submitted. If we are informed of changes to this information by the seller or another third party, we will use reasonable endeavours to update this as soon as practical. 3. Photos, Videos etc: The photographs, property videos and virtual viewings etc. show only certain parts of the property as they appeared at the time they were taken. Areas, measurements and distances given are approximate only. 4. Regulations etc: Any reference to alterations to, or use of, any part of the property does not mean that any necessary planning, building regulations or other consent has been obtained. A buyer must find out by inspection or in other ways that these matters have been properly dealt with and that all information is correct. 5. Fixtures and fittings: A list of the fitted carpets, curtains, light fittings and other items fixed to the property which are included in the sale (or may be available by separate negotiation) will be provided by the Seller’s Lawyer. Particulars dated 05/09/2025. All information is correct at the time of going to print.

