



52 East Hundreds

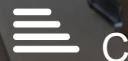
, Fleet, GU51 1HL

£1,795 Per month

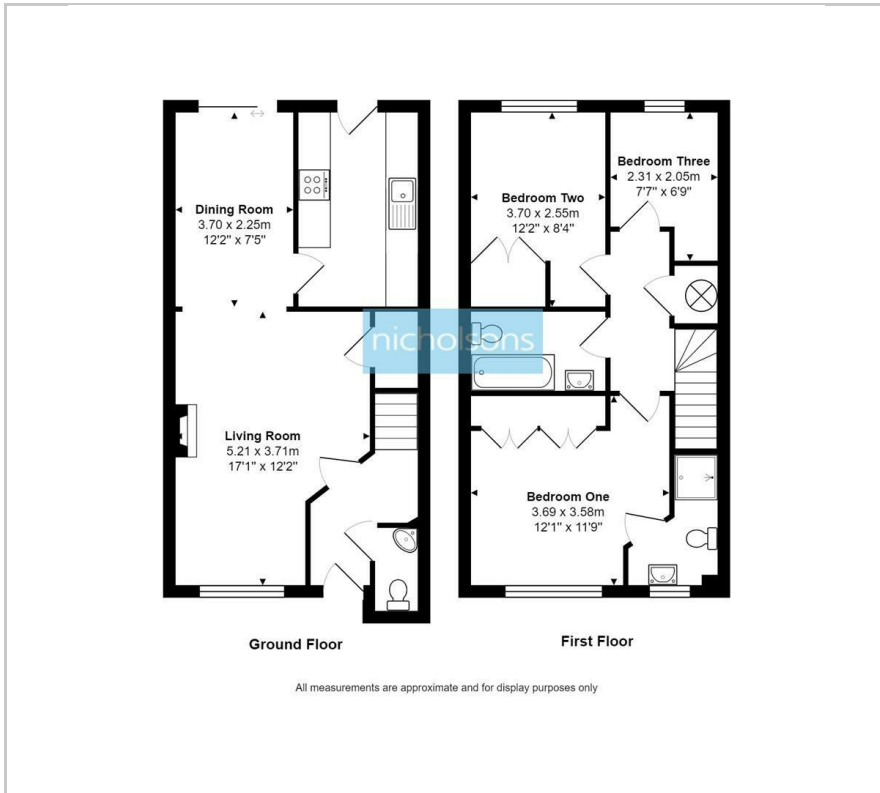
A three bedroom family home with two receptions, separate kitchen, driveway and garage, enclosed rear garden, gas radiator central heating, double glazed windows, situated on the popular Elvetham Heath development.

Viewing

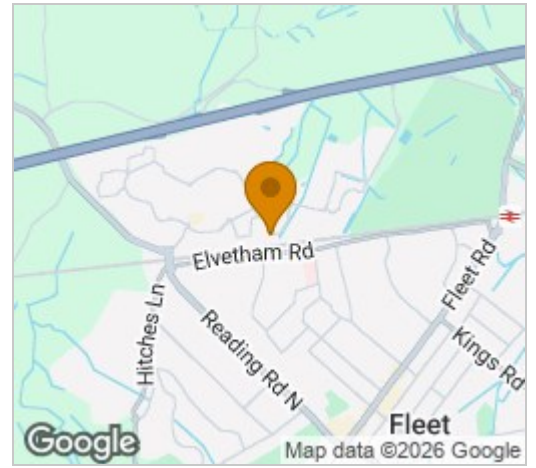
Please contact our Fleet Office on 01252 628400 if you wish to arrange a viewing appointment for this property or require further information.



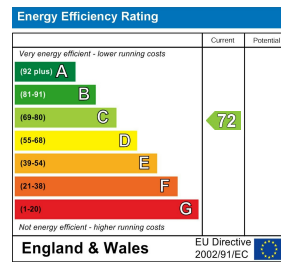
Floor Plan



Area Map



Energy Efficiency Graph



These particulars, whilst believed to be accurate are set out as a general outline only for guidance and do not constitute any part of an offer or contract. Intending purchasers should not rely on them as statements of representation of fact, but must satisfy themselves by inspection or otherwise as to their accuracy. No person in this firm's employment has the authority to make or give any representation or warranty in respect of the property.