



Central Walk, Brimington Chesterfield S43 1AT

welcome to

Central Walk, Brimington Chesterfield

****Guide Price £260,000 - £270,000****

A spacious five-bedroom home offering generous living areas, a kitchen, two reception rooms and a ground-floor study. With ample parking and a private rear garden, it's a versatile family home designed for comfort, space and modern living.

Front Yard / Driveway

A generous frontage gives the home an immediate sense of space, with a wide driveway offering comfortable parking for multiple cars and a clear, welcoming approach to the entrance. The detached garage sits neatly to the side of the property, secured behind tall gates adding practicality storage and security.

Entrance Hall

Stepping inside, the hall sets a calm, inviting tone. There's an easy flow through to the main living areas, with under stair storage, enough space to pause, greet guests and feel the house open up around you.

Reception Room / Bedroom Three

Positioned on the ground floor, this versatile bedroom works beautifully as a guest room, teenager's space or even a second study. Its proportions make it feel comfortable and private, tucked away from the main living areas. This room also features double French doors, creating a seamless connection to the outdoors and allowing for beautiful indoor-outdoor living.

Lounge

A wonderfully balanced room with generous width, perfect for relaxed evenings or more formal entertaining. The large windows from the family room draws in natural light, giving the space a soft, welcoming feel throughout the day. A log burner creates a warm and inviting atmosphere, perfect for cosy nights in.

Family Room

A bright, generous second living space that lends itself to everyday relaxation. Its size makes it perfect for a playroom, media room or an informal lounge

where everyone can unwind together, with access to the rear garden via double French doors.

Kitchen

The kitchen offers excellent workspace and storage, complemented by a structural engineer's report outlining potential for open-plan kitchen diner.

Downstairs W/C

A neatly placed w/c just off the kitchen, ideal for guests and busy family life.

Study

Quietly positioned for focus, the study provides a dedicated workspace away from the main living areas. Whether used for Utility, home working or hobbies, it offers a peaceful retreat.

Stairs / Landing

The staircase rises gently to a broad landing that connects the first-floor rooms with a sense of openness. Natural light filters through, giving the upper floor a calm, airy feel.

Bedroom One

A superb principal bedroom with impressive proportions, offering space for a full suite of furniture and still feeling uncluttered. It's a restful, private retreat at the end of the day.

Bedroom Two

Another excellent double, bright and well-shaped, ideal for children, guests or as a generous secondary bedroom, with built in storage space.

Bedroom Four

A comfortable double room with a balanced layout, perfect for a child's bedroom, dressing room or creative space, with ample fitted storage space.





Bedroom Five

A large single bedroom with space for a double, that works well as a nursery, home office or compact guest room.

Bathroom

The family bathroom is well-positioned and practical, serving all first-floor bedrooms with ease. Its layout offers room for daily routines. Fitted with a full sized bath, toilet, wash basin, walk-in shower and a bluetooth speaker in the ceiling.

Rear Garden

A lovely outdoor space with plenty of room for seating, entertainment and planting. Enclosed and private, it's a garden that invites summer dining, quiet mornings and relaxed weekends with sun all day long.

Garage

The detached garage provides secure parking, workshop potential or excellent storage, complementing the driveway and adding real day-to-day convenience, finished off with working electrics throughout.



view this property online williamhbrown.co.uk/Property/CSF105204



welcome to

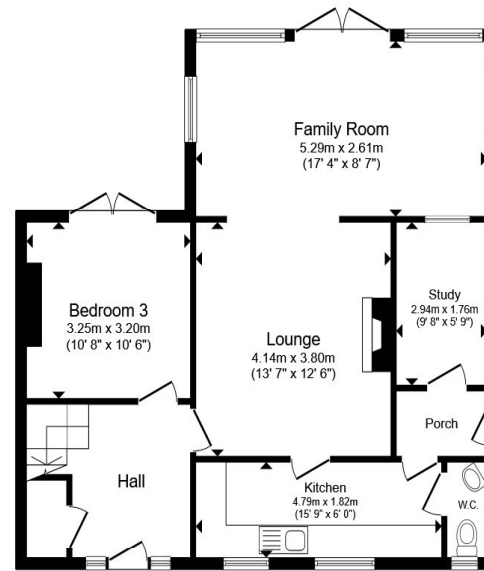
Central Walk, Brimington Chesterfield

- **Guide Price £260,000 - £270,000**
- Council Tax Band - A
- Ample Parking
- Versatile Ground Floor Bedroom
- Spacious Throughout

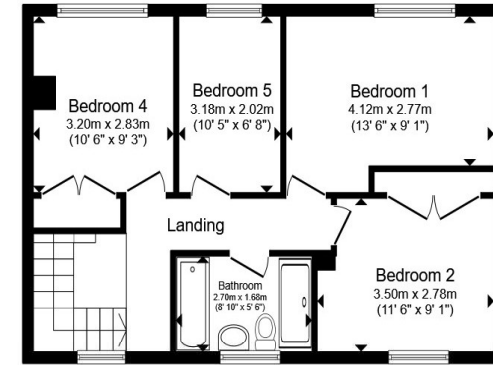
Tenure: Freehold EPC Rating: C
Council Tax Band: A

guide price

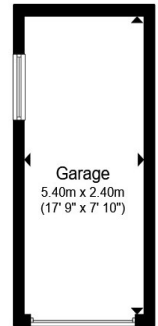
£260,000



Ground Floor



First Floor



Garage

Total floor area 142.2 m² (1,531 sq.ft.) approx

This floor plan is for illustrative purposes only. It is not drawn to scale. Any measurements, floor areas (including any total floor area), openings and orientation are approximate. No details are guaranteed, they cannot be relied upon for any purpose and they do not form part of any agreement. No liability is taken for any error, omission or misstatement. A party must rely upon its own inspection(s). Powered by www.propertybox.io



view this property online williamhbrown.co.uk/Property/CSF105204



Property Ref:
CSF105204 - 0004

1. MONEY LAUNDERING REGULATIONS Intending purchasers will be asked to produce identification documentation at a later stage and we would ask for your co-operation in order that there is no delay in agreeing the sale. 2. These particulars do not constitute part or all of an offer or contract. 3. The measurements indicated are supplied for guidance only and as such must be considered incorrect. Potential buyers are advised to recheck measurements before committing to any expense. 4. We have not tested any apparatus, equipment, fixtures or services and it is in the buyers interest to check the working condition of any appliances. 5. Where an EPC, or a Home Report (Scotland only) is held for this property, it is available for inspection at the branch by appointment. If you require a printed version of a Home Report, you will need to pay a reasonable production charge reflecting printing and other costs. 6. We are not able to offer an opinion either written or verbal on the content of these reports and this must be obtained from your legal representative. 7. Whilst we take care in preparing these reports, a buyer should ensure that his/her legal representative confirms as soon as possible all matters relating to title including the extent and boundaries of the property and other important matters before exchange of contracts.

william h brown



01246 204492



chesterfield@williamhbrown.co.uk



6 Glumangate, CHESTERFIELD, Derbyshire, S40 1TP



williamhbrown.co.uk