



Robson House

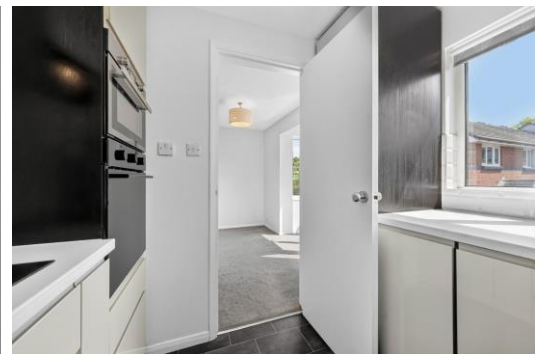
7b Red Lion Lane, SE18

£1,650 per month
(£380.77 per week)

A bright and spacious apartment in a popular development, featuring a large reception room, modern kitchen, and well-sized bedrooms.

Further benefits include a contemporary bathroom, good storage, parking, and a convenient location close to amenities

CHESTERTONS



Robson House

7b Red Lion Lane, SE18

- Spacious and well-presented apartment with a bright reception room, ideal for relaxing and entertaining
- Modern, fully fitted kitchen with ample storage and worktop space
- Multiple generously sized bedrooms, offering flexibility for home working or guest use
- Contemporary bathroom and additional storage throughout
- Set within well-maintained grounds with parking available, close to local amenities and transport links

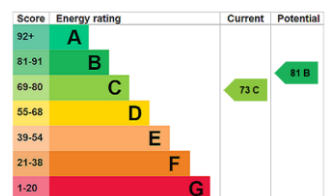


A well-presented and generously proportioned apartment set within a popular residential development, offering bright and versatile accommodation throughout.

The property opens into a welcoming entrance hall leading to a spacious reception room, ideal for both relaxing and entertaining. Large windows allow for an abundance of natural light, creating a warm and airy feel. The separate kitchen is modern and well-equipped, featuring a range of fitted units and ample worktop space.

There are multiple well-sized bedrooms, each neutrally decorated

Minimum Term: 12 months
Deposit Required: £1,903.85
Local Authority:
Council Tax Band:
EPC Rating: C
Unfurnished

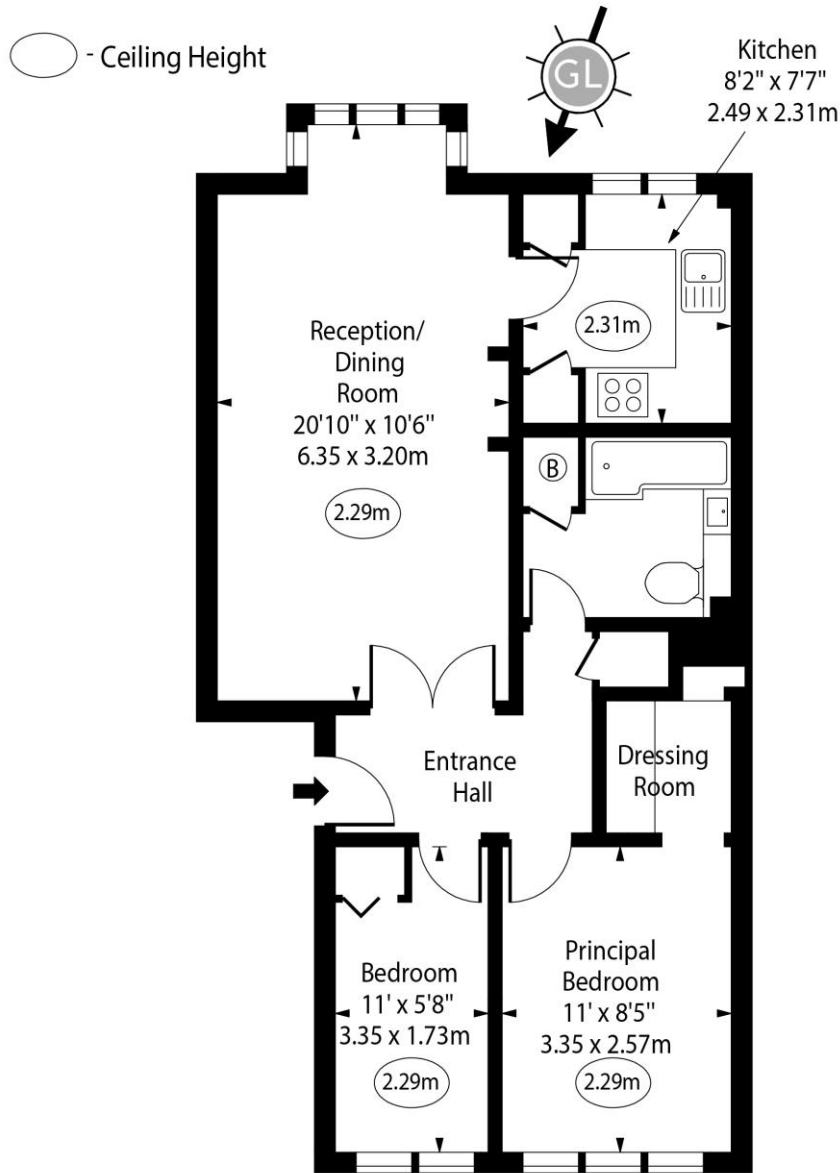


Chestertons Canary Wharf & Greenwich Sales

Harbour Island
 28 Harbour Exchange Square
 London
 E14 9GE
 canarywharf@chestertons.co.uk
 020 7510 8300
 chestertons.co.uk

Additional tenant charges apply (fees apply to non-AST tenancies only)
 Tenancy Agreement Fee: £300
 References per Tenant/Guarantor: £60
 Inventory check (approx. £100 – £250 inc. VAT)
 chestertons.co.uk/property-to-rent/applicable-fees

Robson House,
Red Lion Lane, SE18



First Floor

Approx Gross Internal Area 582 Sq Ft - 54.07 Sq M

Every attempt has been made to ensure the accuracy of the floor plan shown. However, all measurements, fixtures, fittings, and data shown are approximate interpretations and for illustrative purposes only. Measured according to the RICS. Not To Scale.

www.goldlens.co.uk
Ref. No. 031598M

