



OH

Dedworth Road, Windsor  
£285,000

OSBORNE HEATH



This spacious split-level ground and first floor apartment has an open-plan kitchen, living and dining room with an island, downstairs WC, double bedroom with fitted storage and an en suite bathroom.

Outside the development is gated and this property has one allocated parking space. There is also a communal lawned area for residents and a secure communal bike shed.

The Beeches is a small gated cul-de-sac to the west of Windsor. There is a range of shopping facilities that are walking distance including Tesco and Aldi, with additional facilities in Windsor town centre. Windsor has a wide range of shops and restaurants as well as the Greene Oak, The Castle, Great Park, Racecourse and Legoland. Nearby train stations include Windsor & Eton Central and Windsor & Eton Riverside where trains run to London Paddington (via Slough) and London Waterloo, and there is bus stop close by including the GoToGate bus service to Heathrow Terminal 5. The area is well served by a number of state, private and international schools and there are various parks close by including Sutherland Grange. Windsor is also convenient for the M4, M25 and Heathrow Airport.

## Dedworth Road, Windsor

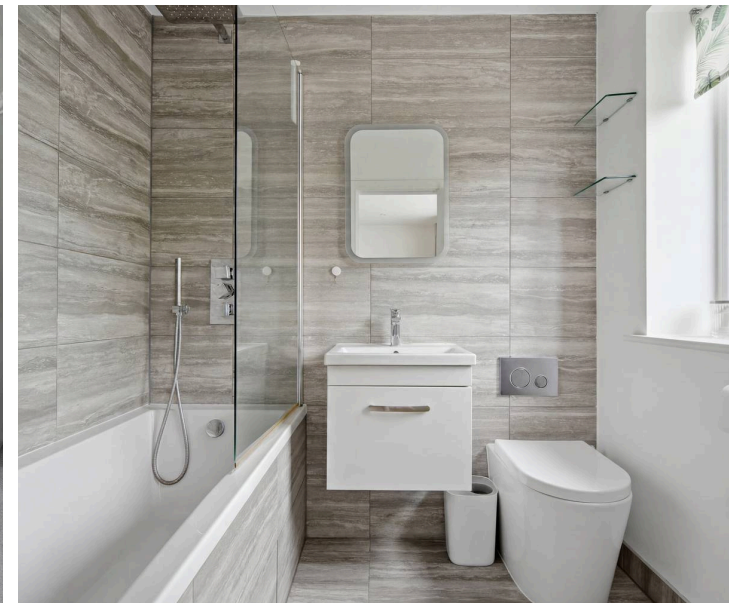
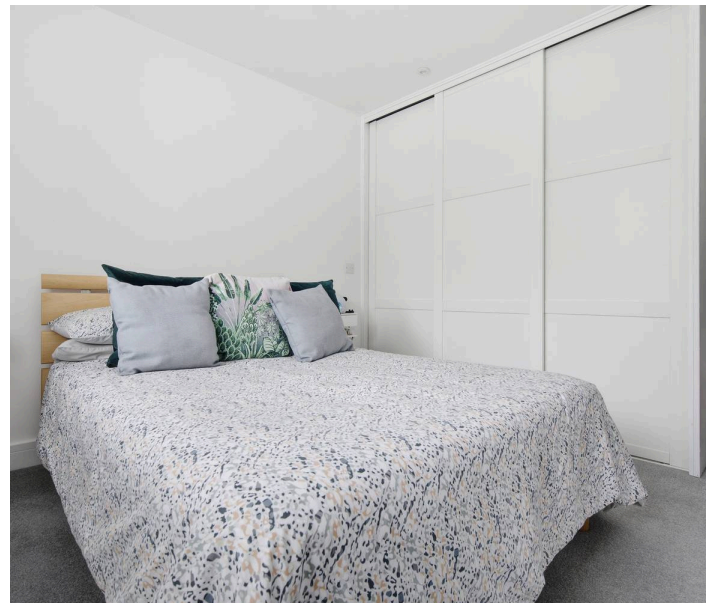
- One Double Bedroom
- Open-Plan Living
- Modern Kitchen
- Modern Bathroom
- Downstairs WC
- Allocated Parking
- Gated Development

Council Tax band: C

Tenure: Leasehold

EPC Energy Efficiency Rating: C

EPC Environmental Impact Rating: C



**APPROXIMATE FLOOR AREA**  
Apartment - 51.10 sq m - 551 sq ft  
(Gross Internal Area)



**NOT TO SCALE**  
This plan is for illustration purposes only



**Ground Floor**



**First Floor**

**OSBORNEHEATH.CO.UK**

This floor plan has been created by Property Shoot Ltd following the RICS code of measuring and is for indicative guidance only. Whilst every attempt has been made to ensure the accuracy of the floor plan contained here, measurements of doors, windows and rooms are approximate and no responsibility is taken for any error, omission or misstatement.

Details shown on this floorplan, including all measurements, areas and proportions cannot be guaranteed by either the provider or estate agency and should not be relied upon.