

DARWIN ROAD, EALING



£1,850 PER MONTH

Tuffin & Wren are delighted to offer this smart, spacious, purpose-built maisonette set over the first floor of this very conveniently located period building. Features include; its own entrance, large living room, 2 bedrooms, stylish modern fitted kitchen/dining room, a superb contemporary bathroom and direct access to a westerly facing roof terrace and own rear garden. The property is vacant and available for immediate occupancy, subject to the usual checks.

TUFFIN & WREN

Independent Estate Agents



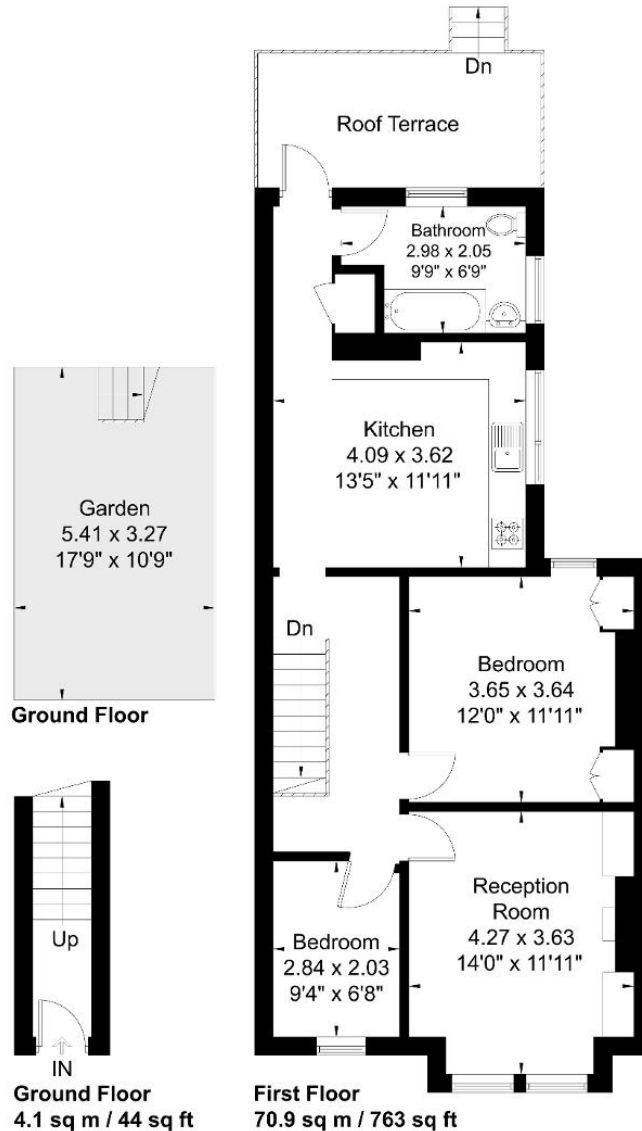
Further Information

For more details please call us on **020 8566 3366** or send an email to rent@tuffin-wren.co.uk.

Please note it is not our company policy to test services, heating systems and domestic appliances, therefore we cannot verify that they are in working order. Prospective purchasers are advised to obtain verification from their solicitors and/or surveyors.

Darwin Road

Approximate Gross Internal Area = 75 sq m / 807 sq ft



Although every attempt has been made to ensure accuracy, all measurements are approximate.
The floorplan is for illustrative purposes only and not to scale.
© www.perspective.co.uk

Energy Efficiency Rating			
Score	Energy rating	Current	Potential
92+	A		
81-91	B		
69-80	C	71 C	77 C
55-68	D		
39-54	E		
21-38	F		
1-20	G		