



E302 Metropol East

Roseville Street





E302 Metropol East, Roseville Street, St Helier, JE2 4DG

Beautifully presented third floor, two bedroom apartment in a popular purpose built block with a large sunny balcony and an under cover parking space.

Located in the popular East block of Metropol this apartment offers a perfect opportunity to step onto the property ladder. Comprising of a spacious open plan living layout and west facing balcony, perfect for that afternoon and evening sun. This modern apartment has two bedrooms and two bathrooms, a utility store and an extra storage cupboard.

With an under cover parking space and storage locker whilst being conveniently located on the outskirts of town this apartment makes an ideal home for a practical and well located lifestyle.



2



2



1

Parish: St Helier

Qualification: Qualified

Tenure: Share Transfer

Price £480,000



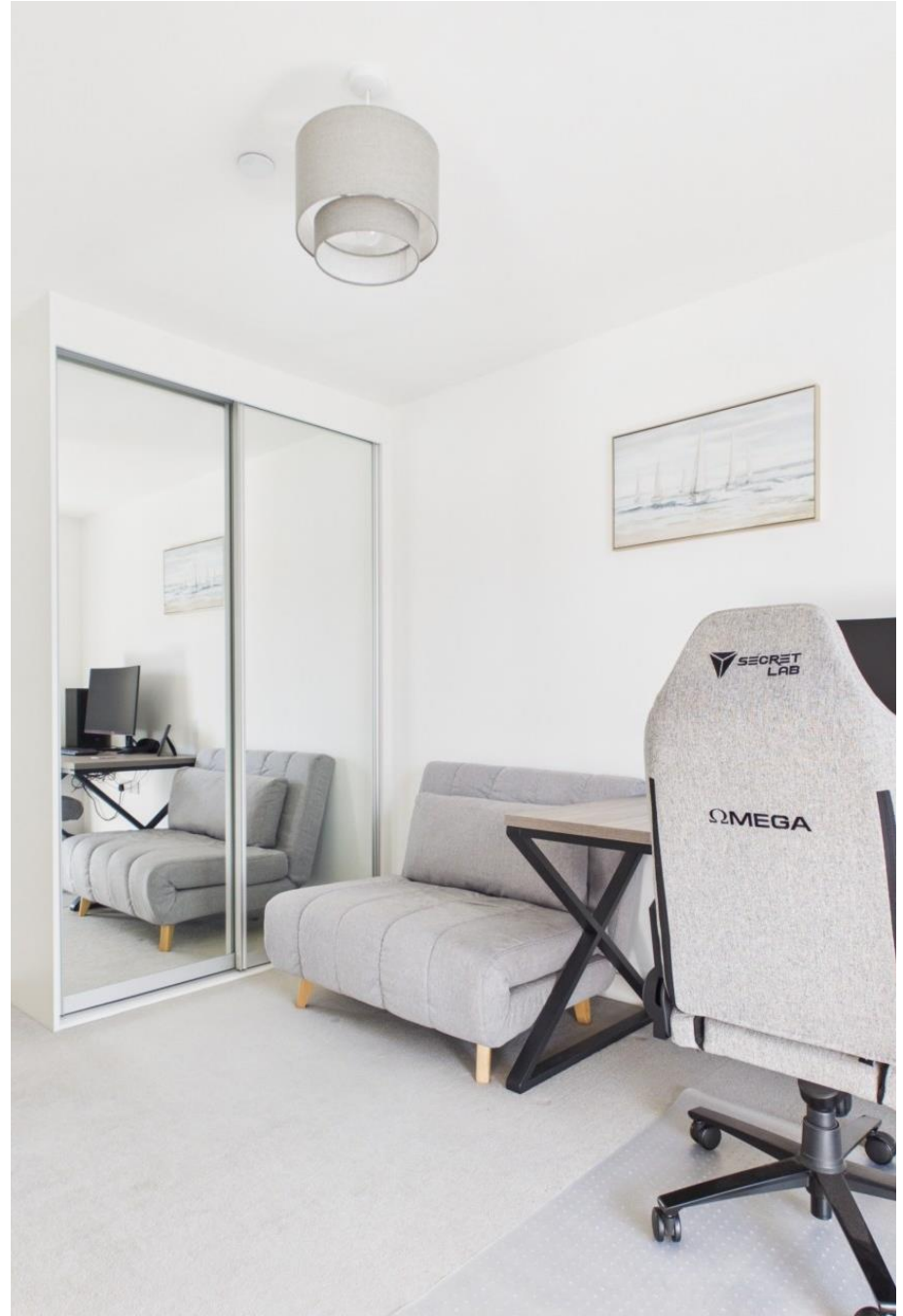
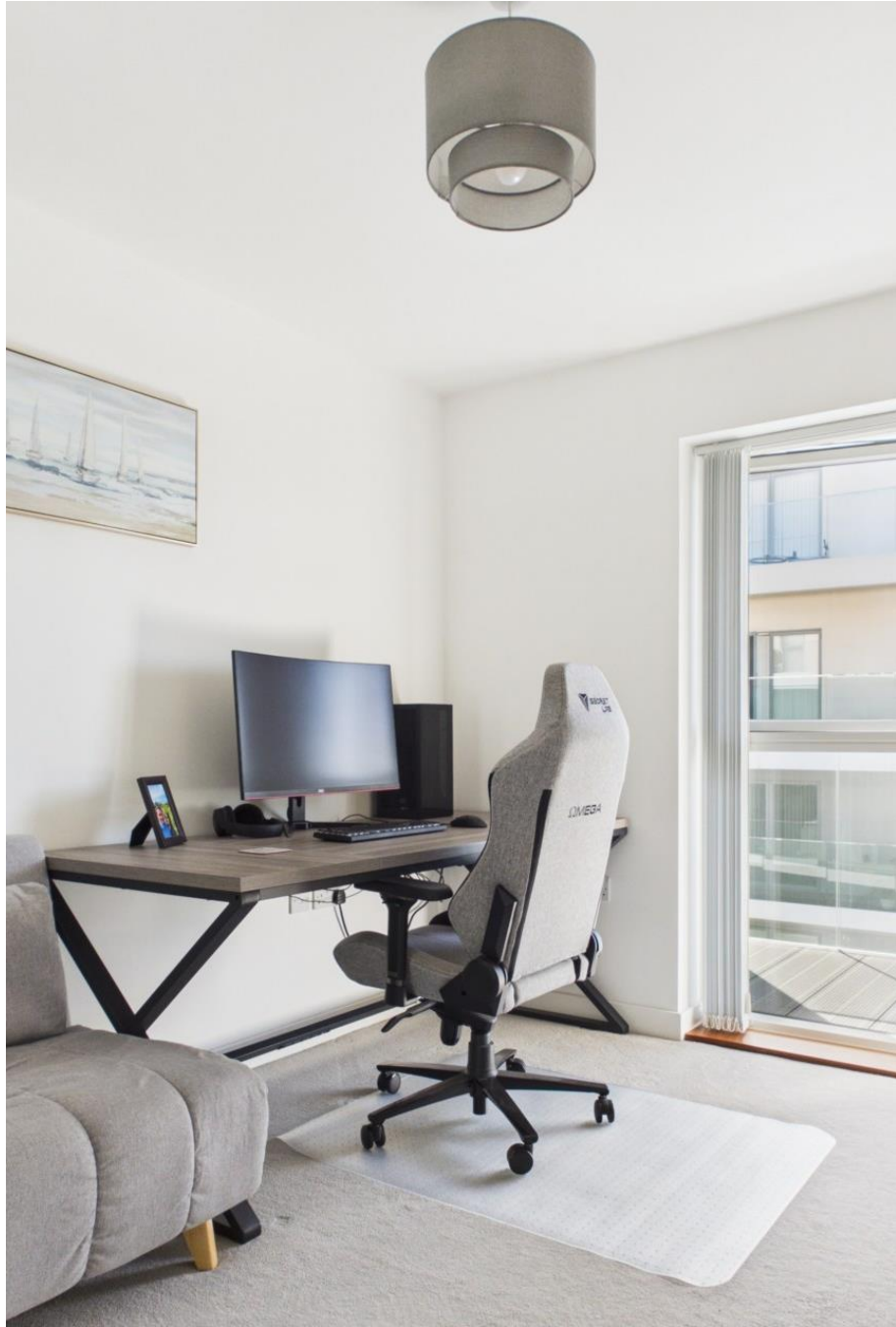
- Two bedroom two bathroom apartment
- Third floor in purpose built block
- Sunny west facing balcony
- Spacious open plan living
- One parking space and storage locker
- Outskirts of town location





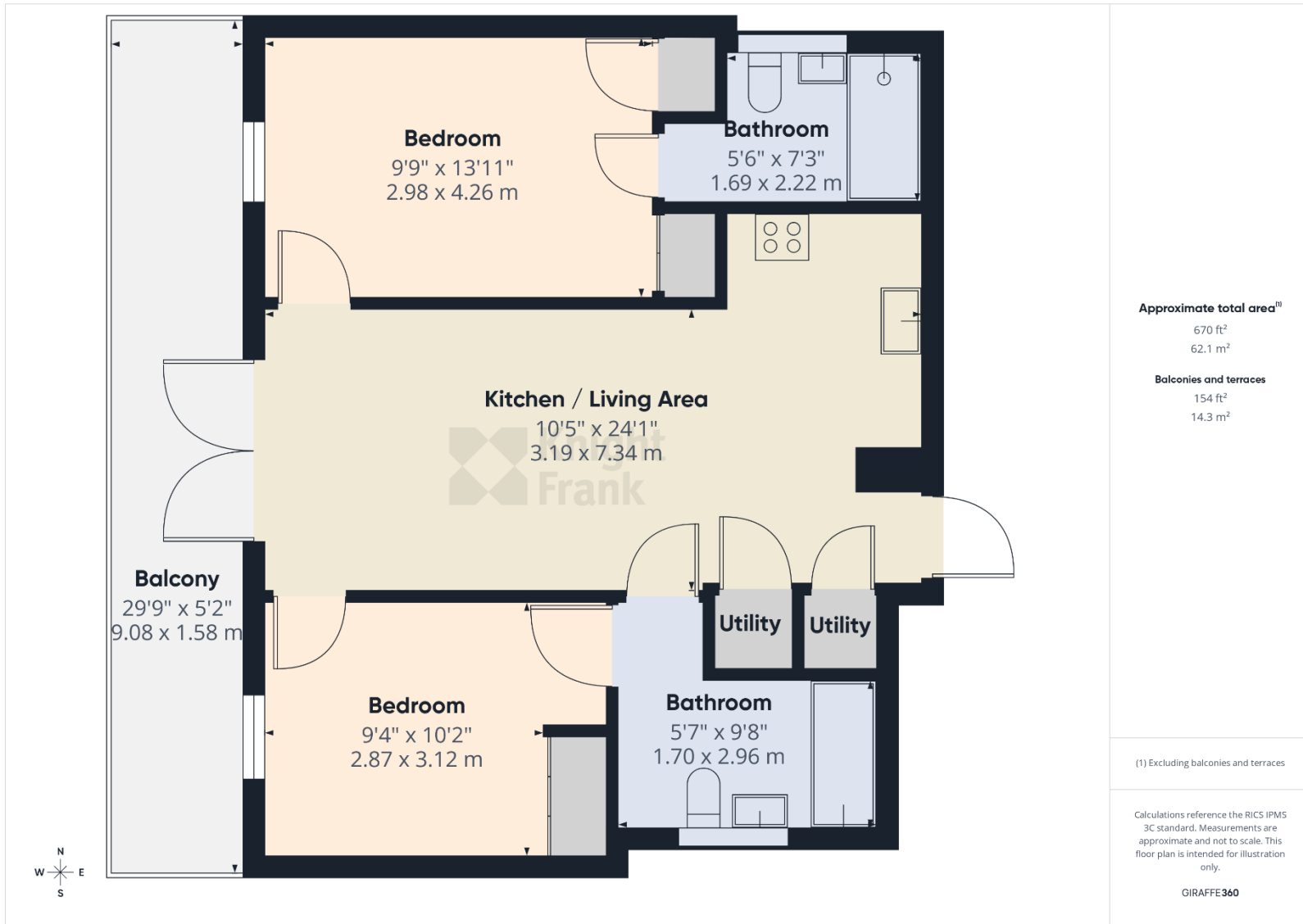












This plan is for layout guidance only. Not drawn to scale unless stated. Windows and door openings are approximate. Whilst every care is taken in the preparation of this plan, please check all dimensions, shapes and compass bearings before making any decisions reliant upon them.

Mains drains

Mains water

Electric heating

Double glazed

Service charge of £281.47 a month (paid quarterly & including parish rates)

+441534 877977

Knight Frank Jersey

37-39 Halkett Place St Helier, Jersey JE2 4WG

knightfrank.je

Your partners in property

1. Particulars: These particulars are not an offer or contract, nor part of one. You should not rely on statements given by Knight Frank Jersey in the particulars, by word of mouth or in writing (“information”) as being factually accurate about the property, its condition or its value. Neither Knight Frank Jersey nor any joint agent has any authority to make any representations about the property, and accordingly any information given is entirely without responsibility on the part of Knight Frank Jersey. 2. Material Information: Please note that the material information is provided to Knight Frank Jersey by third parties and is provided here as a guide only. While Knight Frank Jersey has taken steps to verify this information, we advise you to confirm the details of any such material information prior to any offer being submitted. If we are informed of changes to this information by the seller or another third party, we will use reasonable endeavours to update this as soon as practical. 3. Photos, Videos etc: The photographs, property videos and virtual viewings etc. show only certain parts of the property as they appeared at the time they were taken. Areas, measurements and distances given are approximate only. 4. Regulations etc: Any reference to alterations to, or use of, any part of the property does not mean that any necessary planning, building regulations or other consent has been obtained. A buyer must find out by inspection or in other ways that these matters have been properly dealt with and that all information is correct. 5. Fixtures and fittings: A list of the fitted carpets, curtains, light fittings and other items fixed to the property which are included in the sale (or may be available by separate negotiation) will be provided by the Seller’s Lawyer. Particulars dated 14/04/2026. All information is correct at the time of going to print.

