



6 Manor Road Taunton TA1 5BD

robert
cooney



Situated in the popular Parkfield area within easy walking distance of the town centre, Musgrove Park Hospital and The Castle School is this immaculately presented 4 double bedroomed 1930's detached house with enclosed garden to rear, garage and driveway parking.





Features

- Entrance Hall
- Open Plan Kitchen / Living / Dining Room with central island, Siemens double oven, wine fridge, French doors to garden and door to garage
- Dining Room with woodburner
- Cloakroom
- Master Bedroom with Ensuite Shower Room
- Bedroom 3 with Ensuite Shower room
- 2 further double Bedrooms
- Family Bathroom

- Enclosed garden to rear
- Garage and driveway parking

- Gas central heating
- Double glazing
- Castle School catchment

- Council tax band E

- What3words:
///again.breed.term







Manor Road is located within the highly sought after area of Parkfield and within a few minutes' level walk of the centre of Taunton, the County Town of Somerset.

The town is bustling and forward-looking with excellent amenities including a good selection of independent and high street shops, distinctive restaurants, cafés, a wealth of history and sporting facilities including the County Cricket Ground and Tesco within walking distance of the property.

Taunton benefits from a main line railway station linking to London Paddington in less than 2 hours and excellent access for the M5 motorway at junction 25, situated on the eastern side of the town. International airports can be found within an hour's drive at Exeter and Bristol.



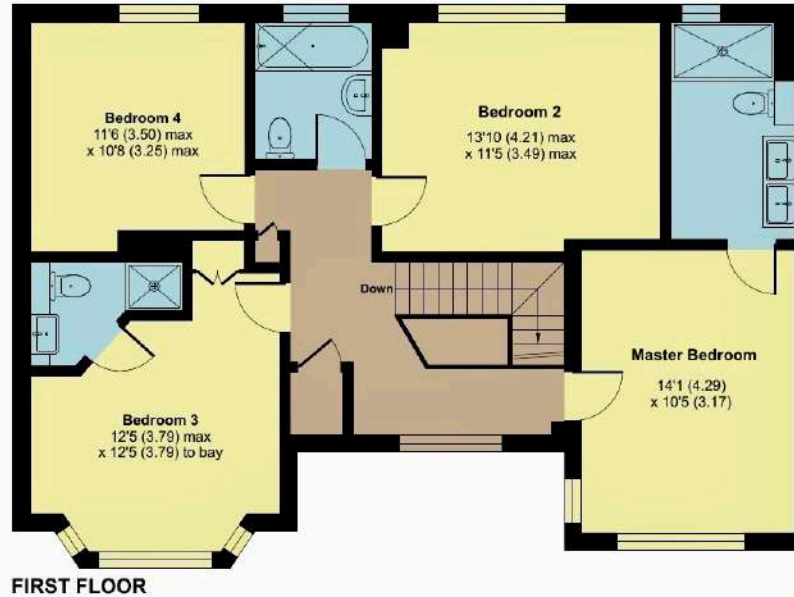
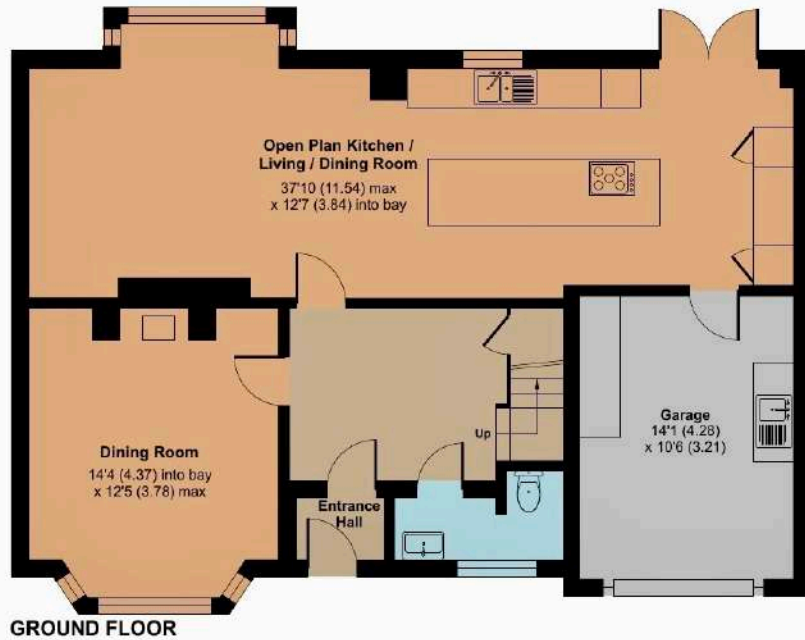
6 Manor Road, Taunton, TA1 5BD

Approximate Area = 1688 sq ft / 156.8 sq m

Garage = 148 sq ft / 13.7 sq m

Total = 1836 sq ft / 170.5 sq m

For identification only - Not to scale



Viewing strictly through the selling agents:

Robert Cooney

Corporation Street, Taunton,
Somerset TA1 4AW

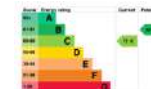
Telephone 01823 230 230

E-mail taunton@robertcooney.co.uk

Website robertcooney.co.uk



Floor plan produced in accordance with RICS Property Measurement 2nd Edition, Incorporating International Property Measurement Standards (IPMS2 Residential). © nchecom 2025. Produced for Robert Cooney. REF: 1248116



For clarification, we wish to inform prospective purchasers that: these particulars are set out as a general outline only for the guidance of intended purchasers, and do not constitute, nor constitute part of, an offer or contract; all descriptions, dimensions, references to condition and necessary permission for use and occupation, and other details, are given without responsibility and any intending purchasers should not rely on them as statements or representation of fact, but must satisfy themselves by inspection or otherwise as to the correctness of each of them; no person in the employment of Robert Cooney has any authority to make or give any representation or warranty whatever in relation to this property; we have not carried out a detailed survey nor tested the services, appliances and specific fittings.

**robert
cooney**

