

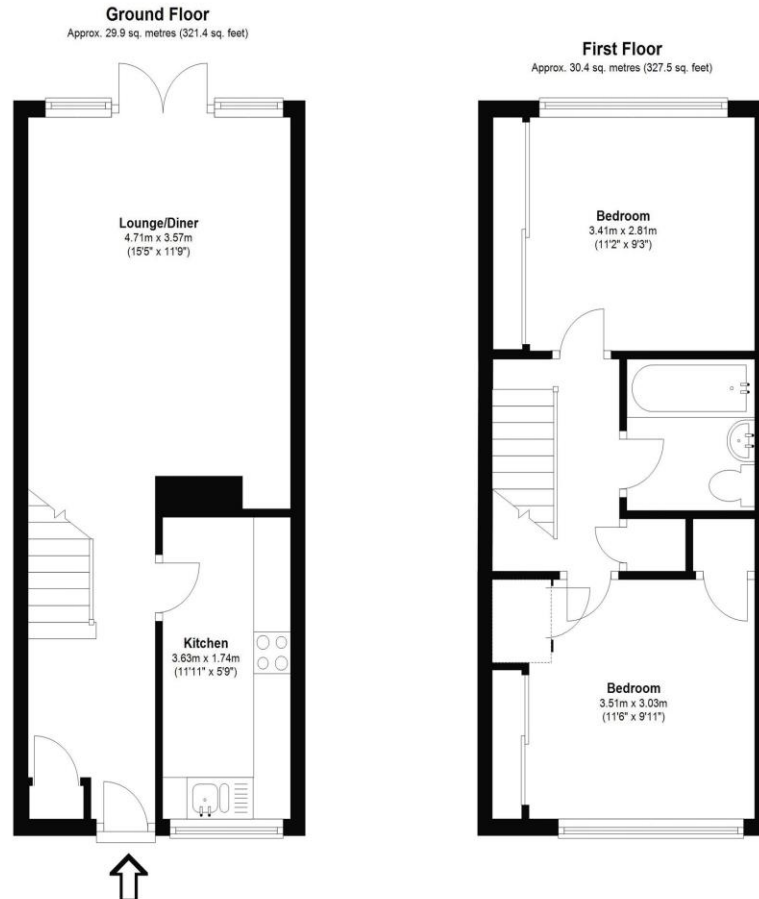


11 Mayfield Close Walton-On-Thames Surrey KT12 5PR

£1795pcm + Initial deposit



Approximate gross internal floor area 60.3 Sq M 648.9 Sq Ft



Whilst every attempt has been made to ensure the accuracy of the floor plan contained here, measurements are approximate and no responsibility is taken for any error, omission, or mis-statement. The plan is for illustrative purposes only and should be used as such by any prospective purchaser.

A two-bedroom mid-terrace home set in this cul-de-sac within moments of Walton mainline train station. Internally the property is well-presented and benefits from double glazing throughout. To the rear of the home is a long, private rear garden with high hedgerows for extra privacy. The station is a few moments across the road and offers a fast train service into London Waterloo. An ideal location for commuters as it is so close to the train station and London yet positioned superbly within a quiet little cul-de-sac. The best of both worlds. The house also benefits from a garage in a close by block, with the cul-de-sac also offering resident parking bays with permits available from the local council at a nominal price per year. Unfurnished. EPC Rating C. Available 13th April 2026.



AGENTS NOTES: These details do not constitute any part of an offer or contract. In issuing them we do not have any authority to give any warranty or representation whatsoever in respect of this property. These details are provided without any responsibility on our part or the part of the vendors. No statements in these details are to be relied upon as representations of fact and purchasers should satisfy themselves by inspection or otherwise as to the accuracy of the statements contained therein.

Equipment: We have not tested the equipment or central heating system mentioned in these particulars and purchasers are advised to satisfy themselves as to their working order and condition.

Measurements: Great care is taken when measuring but measurements should not be relied upon for ordering carpets, equipment, etc.