



18 Taylor Road

, Norwich, NR5 8LZ

£2,095 Per Calendar Month

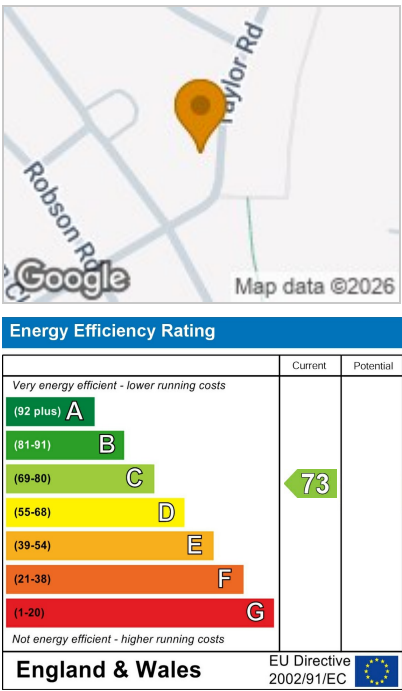
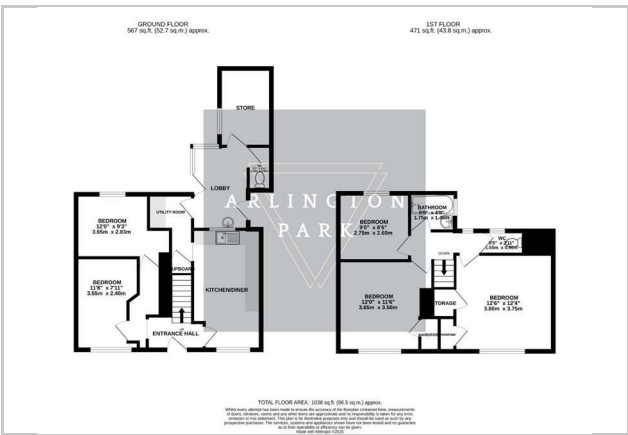


Perfect for a group of five! This spacious house features five double bedrooms and is located within walking distance of UEA. With a sociable kitchen/diner and an enclosed garden, it's an ideal choice. A utility-inclusive package can be added for an additional £24.00 per person per week.

- 5 bedroom student property
- Available From: 19.08.2026
- Weekly Rent: Approx. £108 pppw
- Monthly Rent: £2,350.00 (Excluding Utilities)
- 12 month agreements preferred
- Bedrooms: 5 doubles



For a group of five wanting fairness and convenience, this house is the perfect find. Its prime location on Taylor Road means you can save on bus fare and enjoy a short walk to lectures and the library. Crucially, the property boasts five genuine double bedrooms, ensuring no one in the group has to compromise on space. The large kitchen/diner acts as the social hub of the home, perfect for group meals and catching up. A private enclosed garden provides a great retreat for sunny days. This is a fantastic opportunity to live in a spacious house right on the doorstep of the university. A utility-inclusive package is available for an additional £24.00 per person per week.



25a Earlham Road, Norwich, Norfolk, NR2 3AD  
 Tel: 01603 577255 Email: [youragent@arlingtonpark.co.uk](mailto:youragent@arlingtonpark.co.uk) <https://www.arlingtonpark.co.uk/>