



1 Whirley Low

Foxt, Stoke-On-Trent, ST10 2HR

ABODE are pleased to offer this charming stone-built two bedroom cottage for rental situated in the hamlet of Foxt, Staffordshire.

The Property is within nine miles to Leek and a short countryside drive to Alton. The cottage comprises of hallway, cosy lounge with woodburner, breakfast kitchen, two double bedrooms, modern fitted bathroom, rear courtyard and front lawned garden.

Call ABODE to arrange your viewing.

£850 PCM

1 Whirley Low

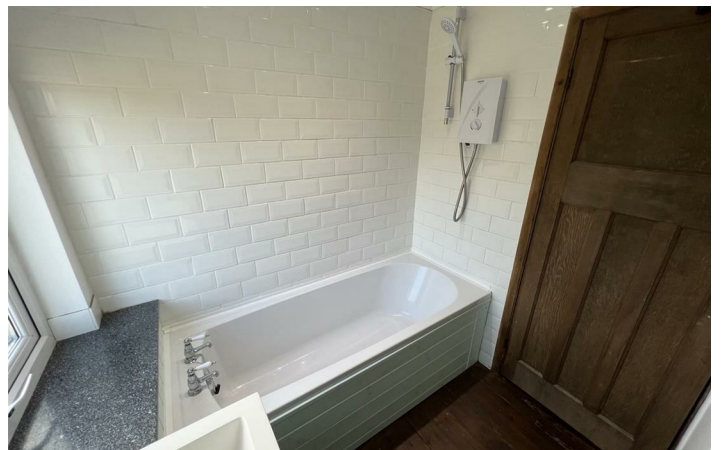
Foxt, Stoke-On-Trent, ST10 2HR



- AVAILABLE NOW!
- LARGE BREAKFAST KITCHEN
- HAMLET LOCATION
- MODERNISED BATHROOM
- CHARMING COTTAGE
- TWO DOUBLE BEDROOMS
- RURAL VIEWS
- COSY LOUNGE WITH WOODBURNER
- FRONT COURTYARD AND REAR LAWN
- 9 MILES FROM LEEK



[Directions](#)



Floor Plan

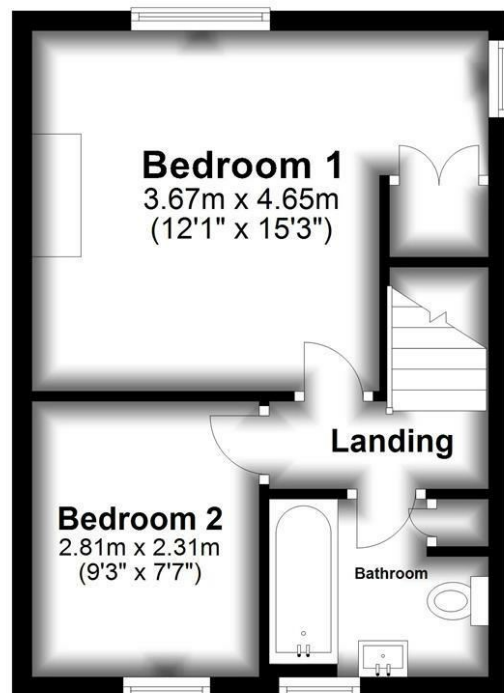
Ground Floor

Approx. 31.0 sq. metres (333.2 sq. feet)



First Floor

Approx. 31.0 sq. metres (333.2 sq. feet)



Total area: approx. 61.9 sq. metres (666.4 sq. feet)

Please use as a guide to layout only. They are not intended to be to scale. Property of Abode Anderson-Dixon.
Burton-Uttoxetter-Ashbourne
Plan produced using PlanUp.

These particulars, whilst believed to be accurate are set out as a general outline only for guidance and do not constitute any part of an offer or contract. Intending purchasers should not rely on them as statements of representation of fact, but must satisfy themselves by inspection or otherwise as to their accuracy. No person in this firm's employment has the authority to make or give any representation or warranty in respect of the property.

1 Cross Street, Cheadle, ST10 1NP
Tel: Email: lettings@abodemidlands.co.uk

| Energy Efficiency Rating | | Current | Potential |
|---|--|-------------------------|-----------|
| Very energy efficient - lower running costs | | | |
| (92 plus) A | | | 85 |
| (81-91) B | | | |
| (69-80) C | | | |
| (55-68) D | | | |
| (39-54) E | | 41 | |
| (21-38) F | | | |
| (1-20) G | | | |
| Not energy efficient - higher running costs | | | |
| England & Wales | | EU Directive 2002/91/EC | |