

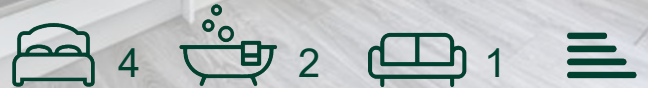


jt | JORGENSENTURNER



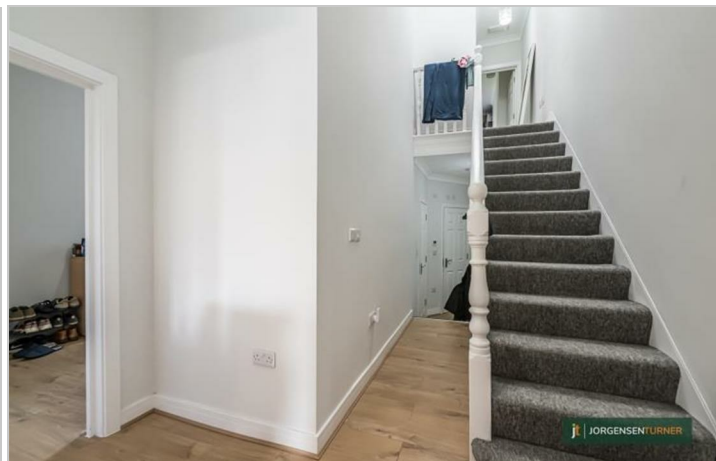
Lime Grove, Shepherds  
Bush, W12

£4,200 Per Month



# Lime Grove, Shepherds Bush, W12

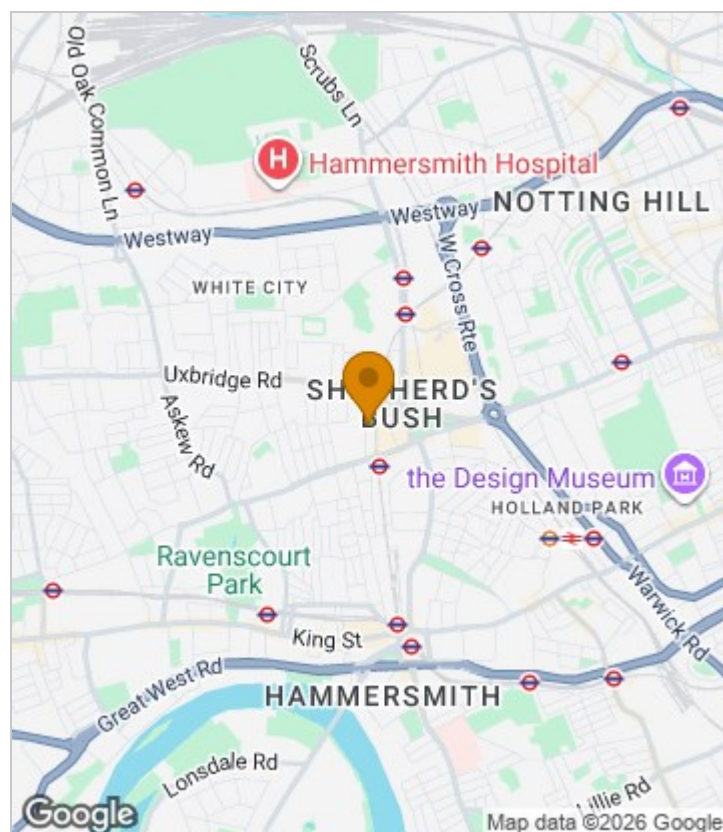
£4,200 Per Month



## Summary Description

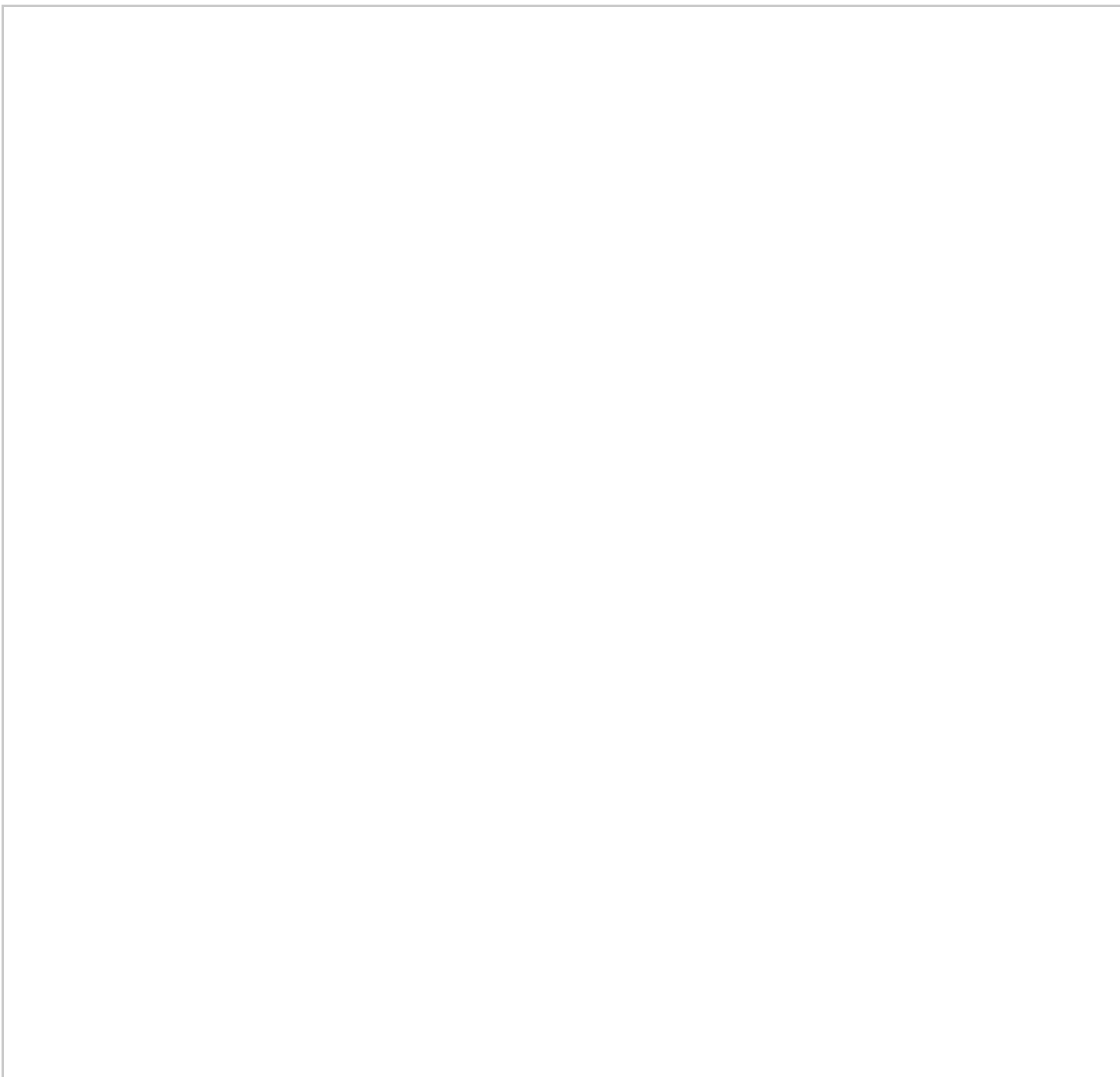
**\*\*NEW TO THE MARKET\*\*** Jorgensen turner are proud to offer the spacious four double bedroom, two bathroom split level apartment. Situated moment away from vibrant Shepherds Bush Green and all the public transport and amenities it has to offer. Set over two floors this property has a large bright living room with a separate kitchen, perfect for professional sharers. Call now to arrange a viewing.

## Area Map

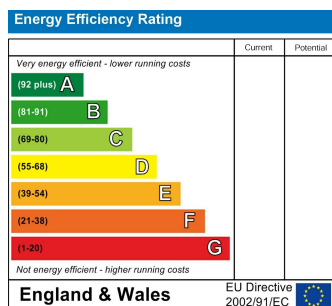




## Floor Plan



## Energy Efficiency Graph



## Viewing

Please contact our Lettings SB Office on 0208 740 8740 if you wish to arrange a viewing appointment for this property or require further information.

- PERFECT FOR SHARERS
- TWO BATHROOMS
- FURNISHED
- FOUR DOUBLE BEDROOMS
- CLOSE TO IMPERIAL COLLEGE WHITE CITY
- AVAILABLE 18th July 2026

For further information contact:

Lettings SB, 234 Uxbridge Road, Shepherds Bush, London, W12 7JD

Tel: 0208 740 8740 Email: [enquiries@jorgensenturner.com](mailto:enquiries@jorgensenturner.com)

<https://www.jorgensenturner.com/>

### Disclaimer

These particulars, whilst believed to be accurate are set out as a general outline only for guidance and do not constitute any part of an offer or contract. Intending purchasers should not rely on them as statements of representation of fact, but must satisfy themselves by inspection or otherwise as to their accuracy. No person in this firm's employment has the authority to make or give any representation or warranty in respect of the property.