



## **The Maltings Wetmore Road, Burton-On-Trent, DE14 1SE**

**£800 Per month**

Zero Deposit Option Available

Welcome to this charming apartment located in The Maltings on Wetmore Road, Burton-On-Trent. This delightful property offers a perfect blend of comfort and convenience, making it an ideal choice for individuals or couples seeking a modern living space.

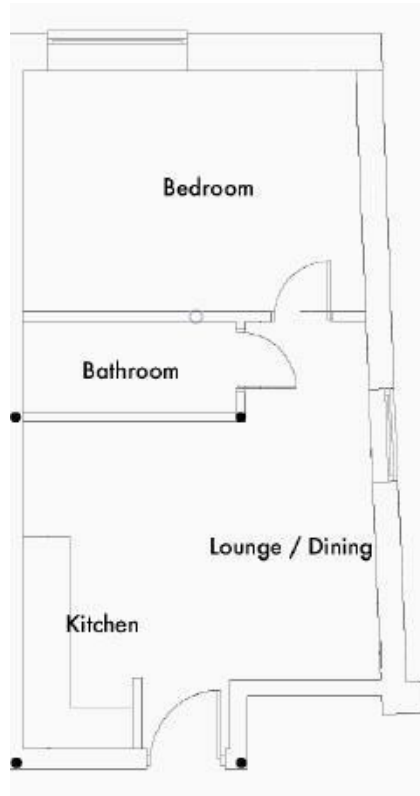
The apartment features a well-proportioned reception room, providing a warm and inviting area for relaxation or entertaining guests. The bedroom is thoughtfully designed, ensuring a peaceful retreat at the end of the day. The bathroom is equipped with essential amenities, catering to your daily needs with ease.

One of the standout features of this property is a parking space for one vehicle, a valuable addition in this bustling area. Residents will appreciate the ease of access to local amenities, shops, and transport links, making daily life both convenient and enjoyable.

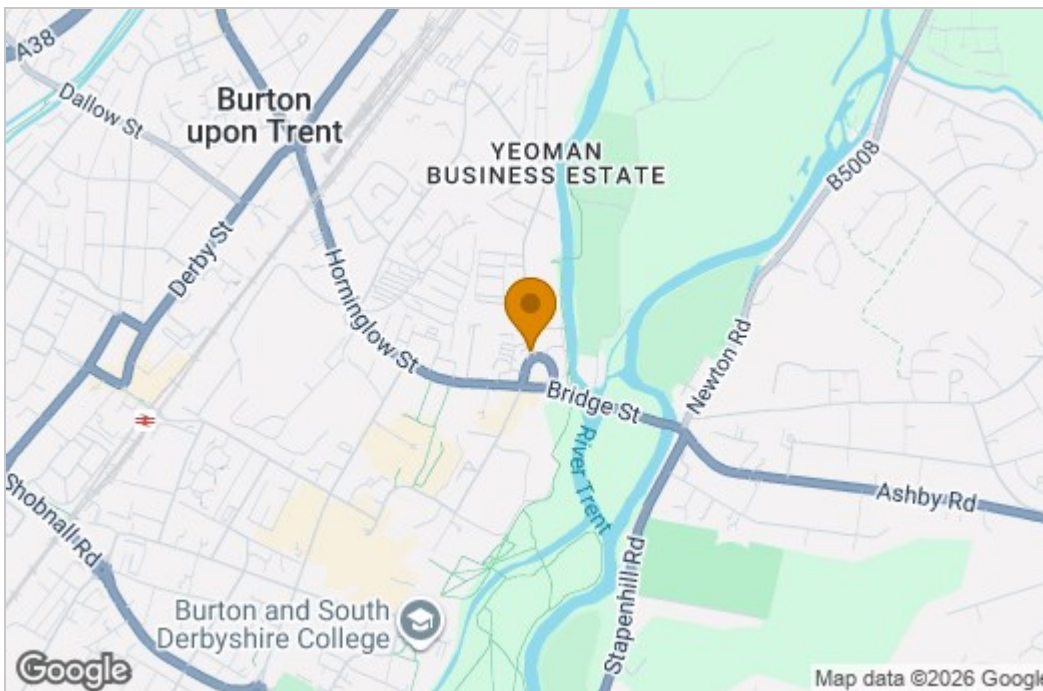
This apartment is not just a place to live; it is a home that offers a comfortable lifestyle in a vibrant community. Do not miss the chance to make this apartment your own.



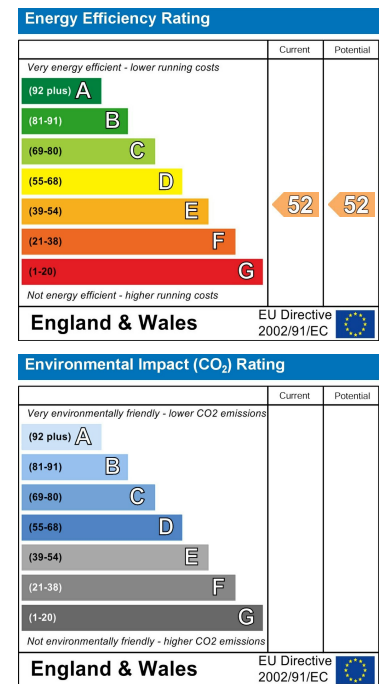
## Floor Plan



## Area Map



## Energy Efficiency Graph



These particulars, whilst believed to be accurate are set out as a general outline only for guidance and do not constitute any part of an offer or contract. Intending purchasers should not rely on them as statements of representation of fact, but must satisfy themselves by inspection or otherwise as to their accuracy. No person in this firm's employment has the authority to make or give any representation or warranty in respect of the property.