



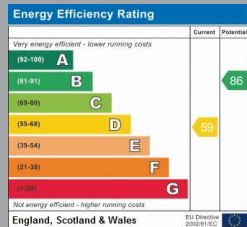
22 ST. JOHNS ROAD
HECKFORD PARK
Dorset, BH15 2NB

£1,550 PCM

goadsby.com

THREE BEDROOM HOUSE

- Three Bedroom House
- Allocated Parking & Garden
- Offered Unfurnished
- Pets Considered
- EPC Rating: Band D



Reference: 819337

Deposit Amount: £1,730.76

Council Tax Band: C

Furnishing: Unfurnished

Heating Type: Gas Central Heating

Parking: Permit parking available

Utilities:

- Mains Supply Electricity
- Mains Supply Gas
- Mains Supply Water - metered

Drainage: Mains Supply Drainage

Broadband: Refer to Ofcom website
www.ofcom.org.uk/phones-and-broadband

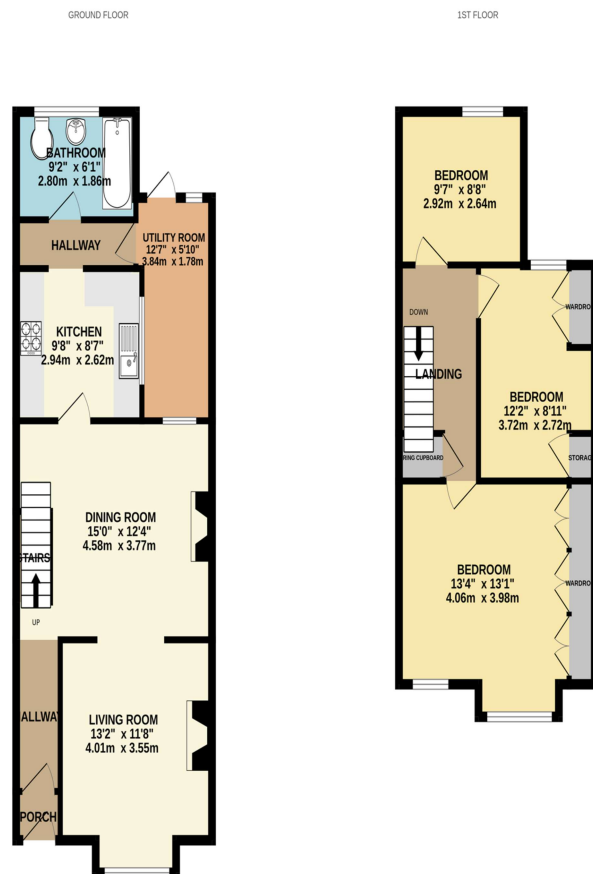
Mobile Signal: Refer to Ofcom website
www.ofcom.org.uk/phones-and-broadband

Flood Risk: For more information refer to
gov.uk, check long term flood risk
www.gov.uk/check-long-term-flood-risk



This three bedroom terraced house is offered on an unfurnished basis. Situated in Heckford Park this property is close to Poole Hospital and Poole Town Centre. The property offers two reception rooms and benefits from allocated parking and private garden.

Please note some photos are from previous tenancy.



This Floor Plan is for guidance only and is NOT to SCALE
Made with Merge3D 3.0.0.0

PLEASE NOTE:

Measurements quoted are approximate and for guidance only. Fixtures, fittings, services & appliances have not been tested and therefore no guarantee can be given that they are in working order. Images have been produced for information and it cannot be inferred that any item shown is included with the property. These particulars are believed to be correct but their accuracy is not guaranteed and they do not constitute an offer or form part of a contract. Solicitors are specifically requested to verify the sales particulars details in the pre-contract enquiries, in particular: price, local and other searches.

Goadsby & Harding (Residential) Ltd

Registered Office: 99 Holdenhurst Road, Bournemouth, Dorset BH8 8DY Registered in England No. 1871280

01202 686555
poole@goadsby.com

245 High Street North
Poole, Dorset
BH15 1DX