

Tay Road, Lubbesthorpe

£230,000

A STYLISH three bedroom GROUND FLOOR flat with a modern feel throughout. Parking is available via an allocated parking space and a detached garage situated to the side in a block.

Council Tax band: B

Tenure: Leasehold

EPC Energy Efficiency Rating: B





Communal Entrance

With access to private entrance hall.

Private Entrance Hall

With wood effect floor, storage cupboard, cupboard housing plumbing for washing machine, radiator.

Sitting Room

16' 0" x 12' 9" (4.88m x 3.89m)

With double glazed windows to the front and side elevations, radiator.

Kitchen

10' 5" x 10' 4" (3.18m x 3.15m)

Measurement narrowing to 1.77 m. With double glazed window to the side elevation, stainless steel sink and drainer unit, a range of wall and base units with work surface over, built-in oven and electric hob with stainless steel chimney hood over, built-in fridge and freezer, built-in dishwasher, cupboard housing boiler, wood effect floor, radiator.



Bedroom One

13' 0" x 11' 5" (3.96m x 3.48m)

Measurement narrowing to 3.42 m. With double glazed windows to the front and side elevations, radiator.

Bedroom Two

11' 6" x 10' 8" (3.51m x 3.25m)

Measurement narrowing to 2.66 m. With double glazed windows to the front and side elevations, radiator.

Bedroom Three

12' 0" x 9' 2" (3.66m x 2.79m)

Measurement narrowing to 1.98 m. With double glazed window to the side elevation, radiator.

Bathroom

6' 7" x 6' 6" (2.01m x 1.98m)

With double glazed window to the side elevation, bath with shower over, pedestal wash hand basin, low-level WC, extractor fan, part tiled walls, wood effect floor, radiator.

Shower Room

7' 3" x 5' 5" (2.21m x 1.65m)

With tiled shower cubicle, low-level WC, pedestal wash hand basin, extractor fan, shaver point, wood effect floor, radiator.

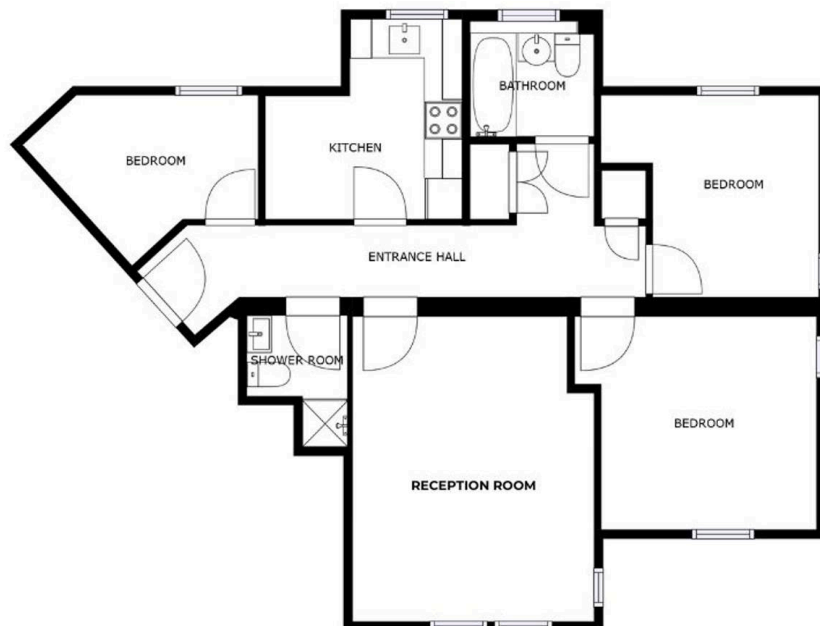
Communal Garden

Driveway 1 Vehicle

Garage

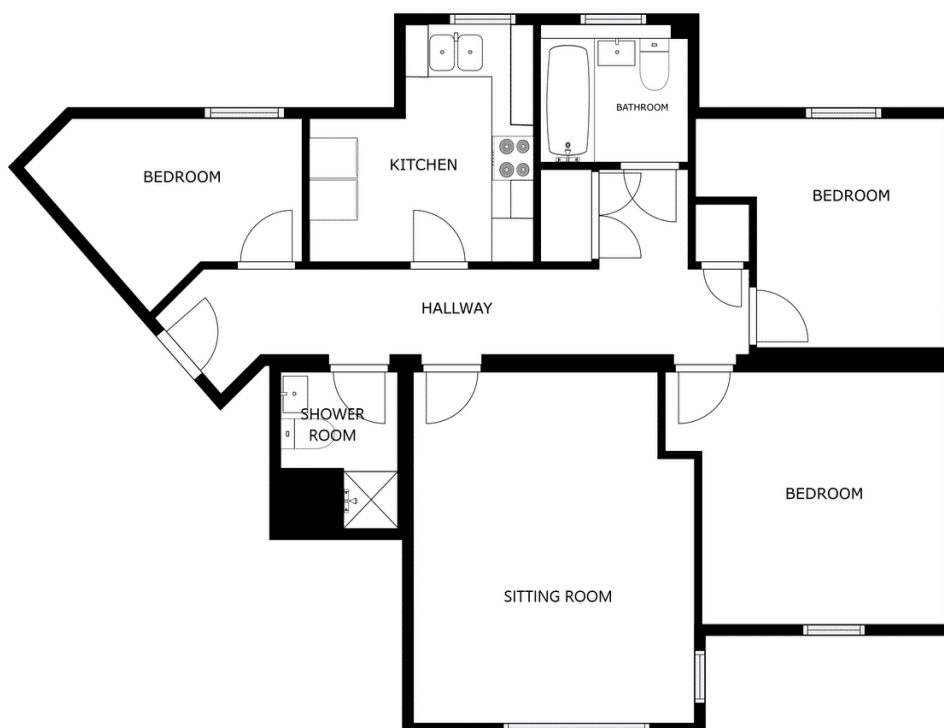
Located in a block to the right hand side. The first garage on the right hand side, with up and over door to the front elevation.

Please note that parking on the driveway and within the garage is subject to vehicle size. Prospective purchasers should ensure the dimensions are suitable for their vehicle before relying on it for parking purposes.



Floor 1

SIZES AND DIMENSIONS ARE APPROXIMATE, ACTUAL MAY VARY.



SIZES AND DIMENSIONS ARE APPROXIMATE, ACTUAL MAY VARY.



We'll keep you moving...



We must inform all prospective purchasers that the measurements are taken by an electronic take and are provided as a guide only and they should not be used as accurate measurements. We have not tested any mains services, gas or electric appliances, or fixtures and fittings mentioned in these details, therefore, prospective purchasers should satisfy themselves before committing to purchase. Intending purchasers must satisfy themselves by inspection or otherwise to the correctness of the statements contained in these particulars. Knightsbridge Estate Agents (nor any person in their employment) has any authority to make any representation or warranty in relation to the property. The floor plans are not to scale, and are intended for use as a guide to the layout of the property only. They should not be used for any other purpose. We are required by law to conduct anti-money laundering checks on all those selling or buying a property. Whilst we retain responsibility for ensuring checks and any ongoing monitoring are carried out correctly, the initial checks are carried out on our behalf by Lifetime Legal who will contact you once you have agreed to instruct us in your sale or had an offer accepted on a property you wish to buy. The cost of these checks is £60 (incl. VAT), which covers the cost of obtaining relevant data and any manual checks and monitoring which might be required. This fee will need to be paid by you in advance of us publishing your property (in the case of a vendor) or issuing a memorandum of sale (in the case of a buyer), directly to Lifetime Legal, and is non-refundable. We will receive some of the fee taken by Lifetime Legal to compensate for its role in the provision of these checks.