



PER MONTH

£2,400 Per Month

Banner Street

London, EC1Y 8PX

Nestled in the vibrant heart of Clerkenwell, this exquisite one-bedroom apartment on Banner Street offers a perfect blend of luxury and convenience. Spanning an impressive 441 square feet, this fully furnished residence is designed to cater to modern living while providing a comfortable and stylish environment.

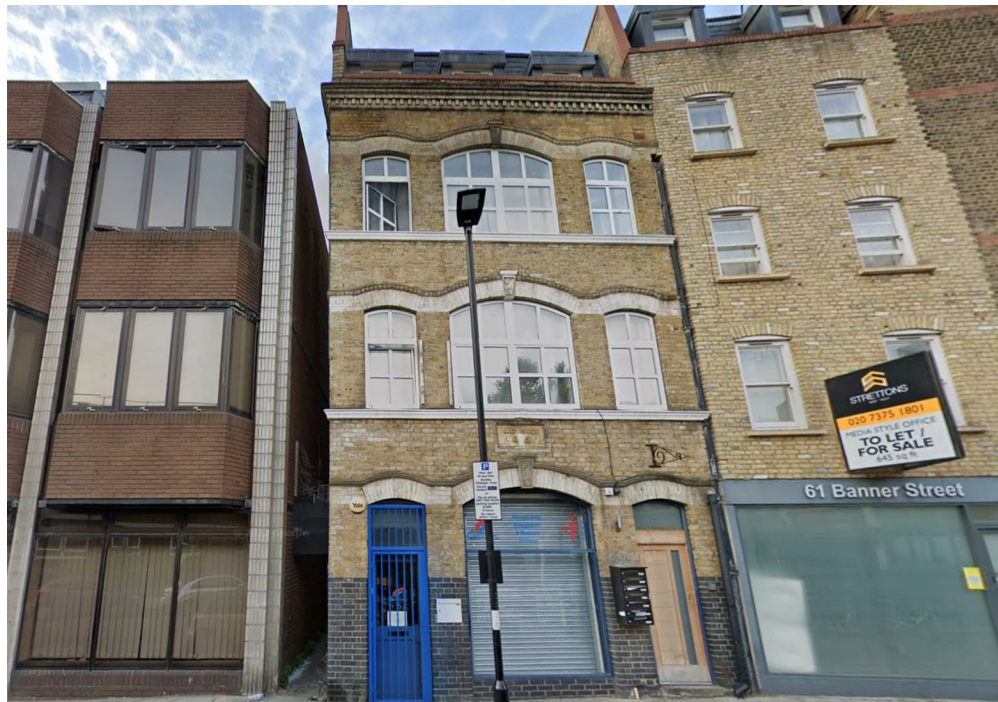
As you step into the apartment, you will be greeted by a well-appointed living space that exudes sophistication. The open-plan layout maximises the use of space, allowing for a seamless flow between the living area and the kitchen. The contemporary furnishings and tasteful decor create an inviting atmosphere, making it an ideal retreat after a busy day in the city.

The bedroom is a tranquil haven, providing a peaceful escape with storage solutions to keep your belongings organised. The apartment is designed to ensure that every inch is utilised effectively, making it feel both spacious and cosy.

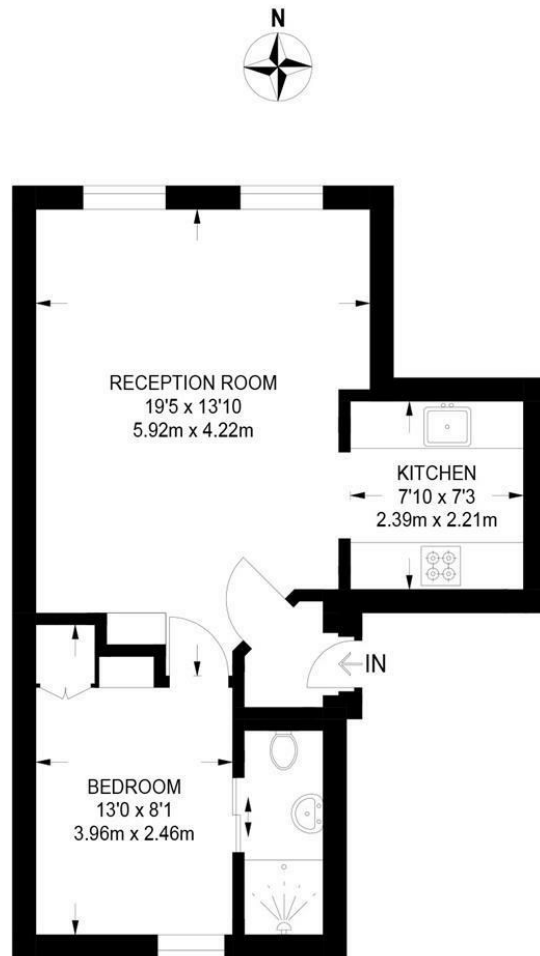
Situated in a central location, this property offers easy access to a plethora of local amenities, including shops, restaurants, and cafes. The vibrant culture of Old Street is just a stone's throw away, providing an array of entertainment options for tenants to enjoy. Excellent transport links are also nearby, making commuting to other parts of London a breeze.

This luxury apartment is perfect for professionals or couples seeking a stylish home in one of London's most sought-after areas. With its prime location and elegant design, this property is not to be missed. Embrace the opportunity to live in a space that truly reflects the essence of modern urban living.

12 month contract
5 weeks deposit: £2769
council tax: band D
furnished







FIRST FLOOR
449 SQ FT / 41.7 SQ M

Energy Efficiency Rating		Current	Potential
<i>Very energy efficient - lower running costs</i>			
(92 plus) A			
(81-91) B		81	87
(69-80) C			
(55-68) D			
(39-54) E			
(21-38) F			
(1-20) G			
<i>Not energy efficient - higher running costs</i>			
England & Wales		EU Directive 2002/91/EC	

Agents Note: Whilst every care has been taken to prepare these particulars, they are for guidance purposes only. All measurements are approximate and are for general guidance purposes only and whilst every care has been taken to ensure their accuracy, they should not be relied upon and potential buyers/tenants are advised to recheck the measurements

OFFICE ADDRESS
 88 Cheshire Street
 London
 E2 6EH

OFFICE DETAILS
 0207 739 6969
 info@peachproperties.com
 www.peachproperties.com