



**POOLE  
TOWNSEND**

# Lound Square, Kendal, LA9 7EF

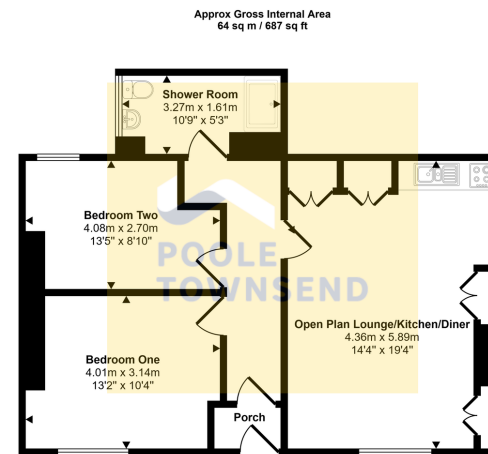
£170,000

🛏️ 2 🚿 1 🚗 1



- Ground Floor Flat
- Open Plan Living Space & Kitchen
- Sleek Shower Room
- Off Road Parking
- Tenure: Leasehold
- Lovingly Renovated Throughout
- 2 Double Bedrooms
- Courtyard Garden
- No Chain
- Council Tax Band: B

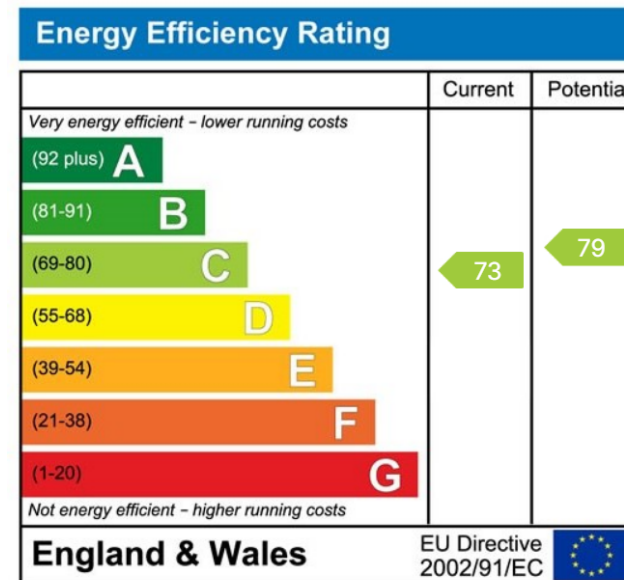




Floorplan

This floorplan is only for illustrative purposes and is not to scale. Measurements of rooms, doors, windows, and any items are approximate and no responsibility is taken for any error, omission or mis-statement. Icons of items such as bathroom suites are representations only and may not look like the real items. Made with Made Snappy 360.

Tucked away on the edge of the town centre and just a stone's throw from the peaceful River Kent, this lovingly renovated ground floor flat is the perfect blend of character and modern living. With exposed stonework adding charm and warmth, the flat offers two comfortable double bedrooms, a sleek contemporary shower room, and an open-plan living space that's perfect for relaxed living and entertaining. Outside, you'll find a courtyard seating area, ideal for morning coffee and off-road parking for added convenience. Offered with no onward chain and within easy reach of local shops, cafes, and transport links, this home offers a welcoming space that's ready to move into and enjoy.



Visit us at  
[www.pooletownsend.co.uk](http://www.pooletownsend.co.uk)  
[enquiries@pooletownsend.co.uk](mailto:enquiries@pooletownsend.co.uk)

We are open  
 Monday – Friday 9.00 – 5.00  
 Saturday 9.00 – 1.00

Barrow 01229 811811  
 Ulverston 01229 588111  
 Grange 015395 33316  
 Kendal 01539 734455  
 Milnthorpe 015395 62044