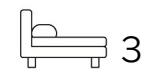




Living
made
better

Shipman Road
Custom House, E16 3DT



Offers In Excess Of £499,950

Shipman Road, Custom House, E16 3DT

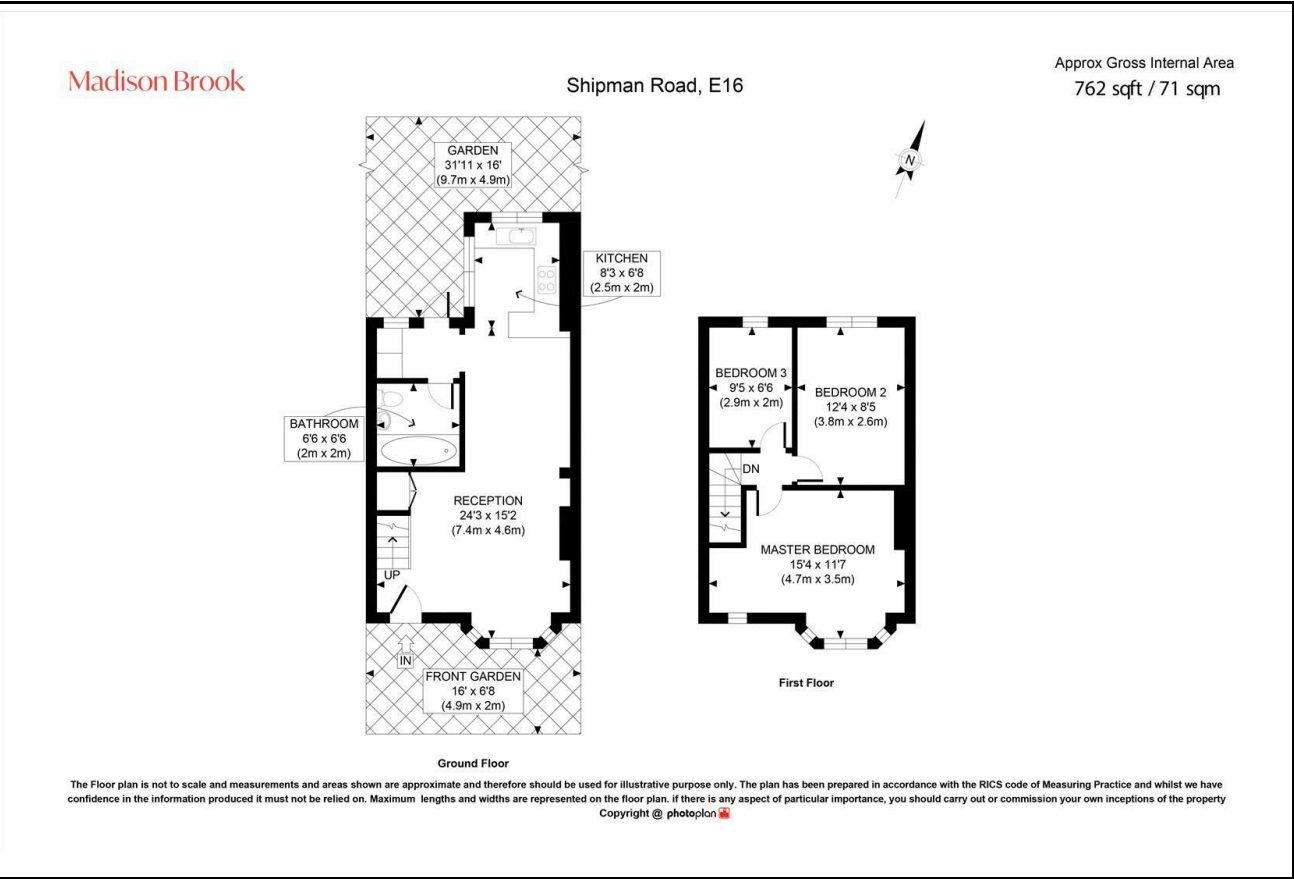
Madison Brook

Property Summary

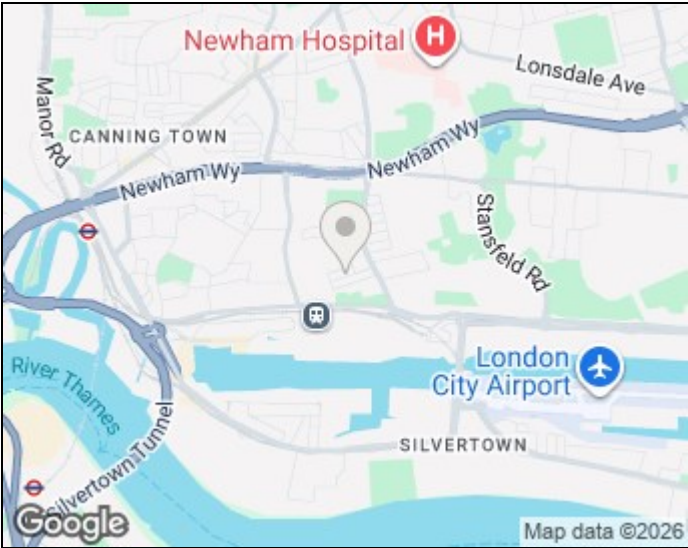
This beautifully updated three-bedroom home in Custom House offers modern interiors, a bright layout, and fantastic convenience. The ground floor features a stylish open-plan living space with a newly fitted kitchen, marble worktops, integrated appliances, breakfast bar, and a chic bathroom. The large rear garden is perfect for relaxing or entertaining. Upstairs, you'll find three well-proportioned bedrooms, including a spacious principal bedroom with a bay window. All rooms have been finished to a high standard throughout.

Located on a quiet residential street close to Canning Town and Custom House station (DLR, Jubilee & Elizabeth Line).

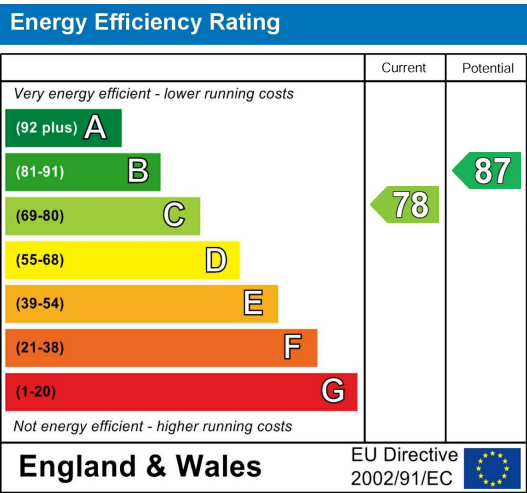
Floorplan



Area Map



Energy Efficiency Graph



These particulars, whilst believed to be accurate are set out as a general outline only for guidance and do not constitute any part of an offer or contract. Intending purchasers should not rely on them as statements of representation of fact, but must satisfy themselves by inspection or otherwise as to their accuracy. No person in this firm's employment has the authority to make or give any representation or warranty in respect of the property.

Unit B 20 Western Gateway, Royal Victoria
Dock, London, E16 1BS
Tel: 020 3946 6000 Email:
docklands@madisonbrook.com
<https://madisonbrook.com/>