



Clifford Drive

Paulton, BS39 7AH

£450,000

Vendor comments "When looking for a new home we wanted space. We love to host friends and family so four double bedrooms, complimented by the four bathrooms with a second en-suite, was very appealing. The view to the front and South facing larger garden sealed the deal. We needed good transport links and being able to get to Bath and Bristol by bus was a major plus."

- First time sold since new
- Large family home
- Four double bedrooms
- Three bathrooms
- Flexible accommodation
- Ideally situated

Viewing

Please contact our Bath Stone Property (MSN) Office on 01761 360144

if you wish to arrange a viewing appointment for this property or require further information.



4



3

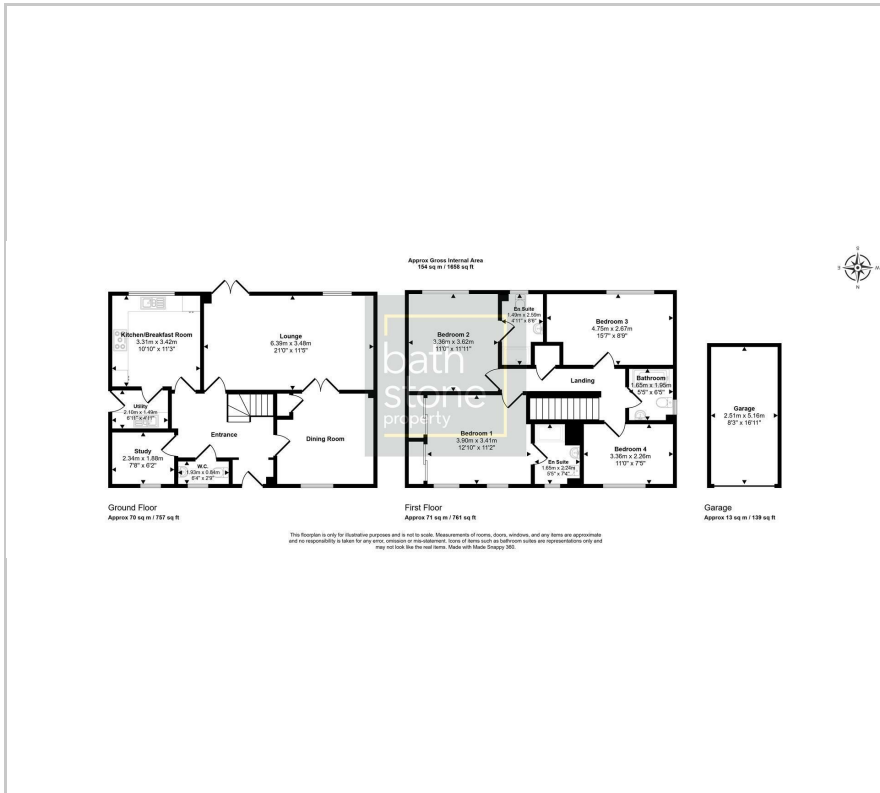


4

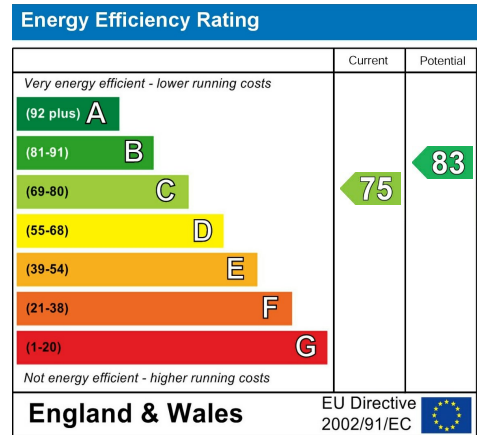


C

Floor Plan



Energy Efficiency Graph



Give us some feedback



These particulars, whilst believed to be accurate are set out as a general outline only for guidance and do not constitute any part of an offer or contract. Intending purchasers should not rely on them as statements of representation of fact, but must satisfy themselves by inspection or otherwise as to their accuracy. No person in this firm's employment has the authority to make or give any representation or warranty in respect of the property.