



## Hither Green Lane, SE13

£320,000

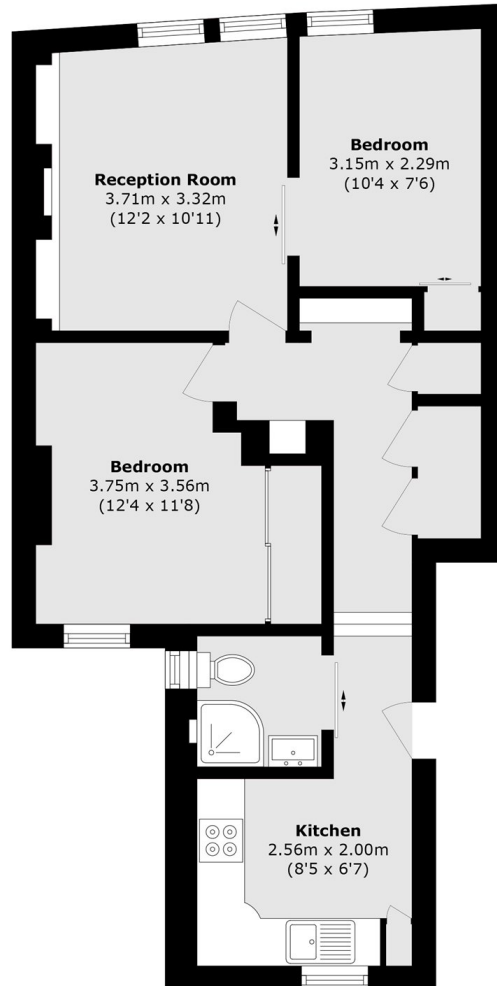
A beautifully designed, turn key ready, two-bedroom apartment set within a period building in the heart of Hither Green. Boasting a high end kitchen and a smart work from home set-up, this luxury apartment combines high quality spec with comfortable living.

Property benefits from close proximity to local shops, cafés and restaurants. Well positioned moments from Hither Green station and Mountsfield Park with open green spaces, tennis courts and bowling green.

### Features

- High Specification
- Two Bedrooms
- Comfortable Reception Room
- High End Kitchen
- Close To Transport
- No Onward Chain

Hither Green Lane,  
LONDON, SE13



Total area (approx.): 52.4 sq. m (564.0 sq. ft)