



Avonmore Gardens, W14

£2,700 Per calendar month

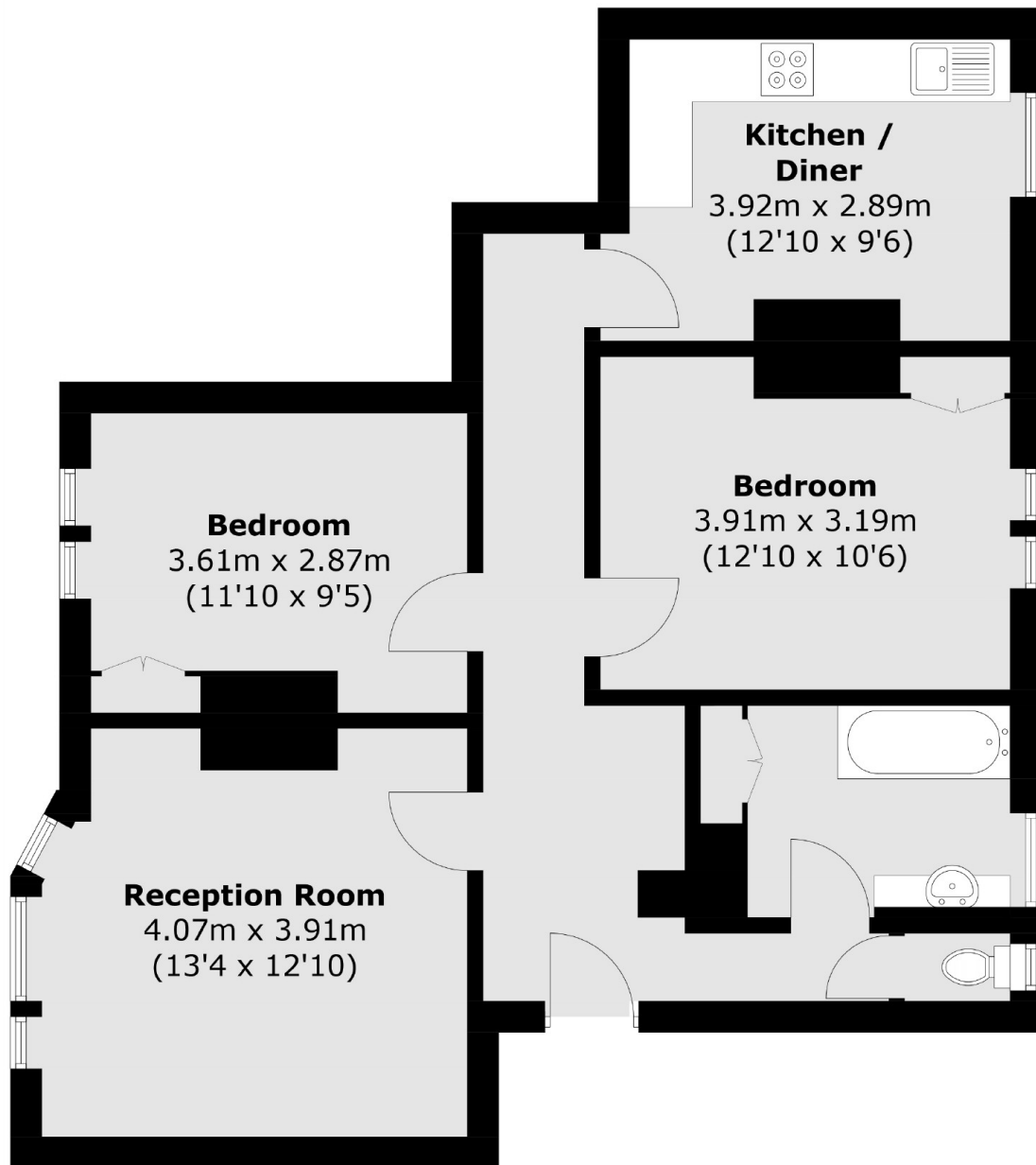
This two double bedroom property is located in a gated development close to Kensington High Street and the new Kensington Olympia Development. With wood flooring throughout, separate kitchen and having been newly repainted throughout this property is ideal for a family or professional sharers.

Avonmore Gardens is close to all the transport links, shops, cafés, bars and restaurants in Kensington Olympia, West Kensington, High Street Kensington and Hammersmith.

Features

- Two Double Bedrooms
- Separate Kitchen
- Wood Flooring
- Gated Development
- Close to Transport Links
- Mansion Block

Avonmore Gardens, London, W14



Lower Ground Floor

Total area (approx.): 72.0 sq. m (775.0 sq. ft)