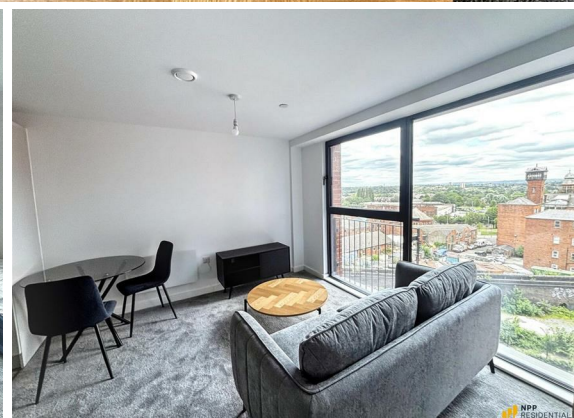
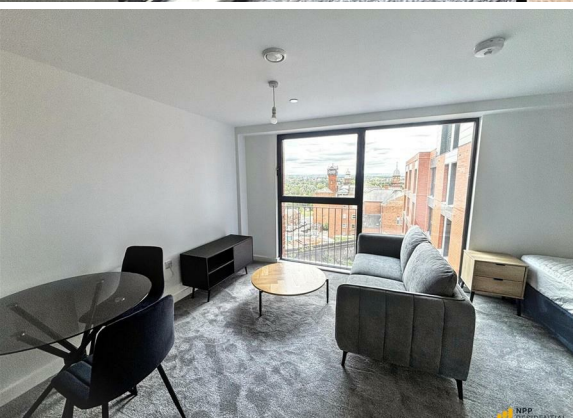




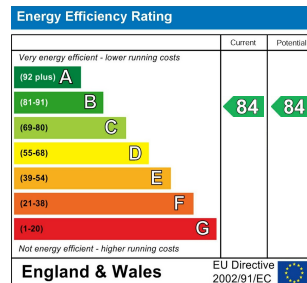
0 Bed
Apartment
located in Ford Lane

£1,000 Per Month



 **NPP**
RESIDENTIAL

EPC Rating: B
Council Tax Band: New Build



DIRECTIONS

CONTACT

22 Lloyd Street
Manchester
M2 5WA

E: info@nppresidential.co.uk
T: 0161 639 0059
<https://nppresidential.co.uk/>

