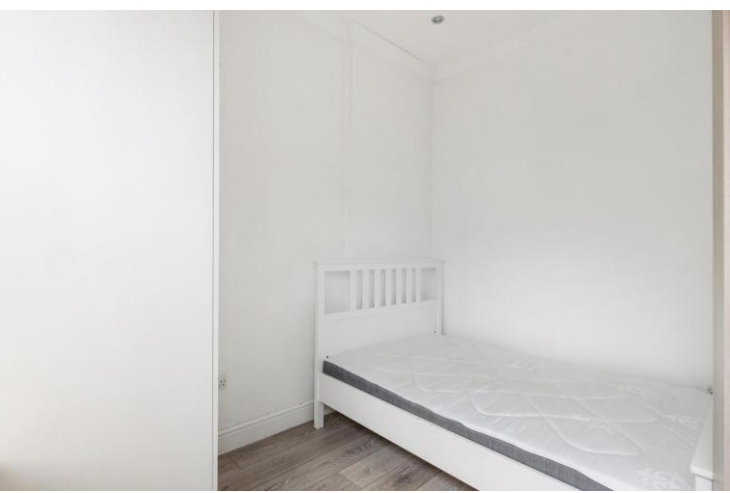




St Johns Hill
SW11

CHESTERTONS





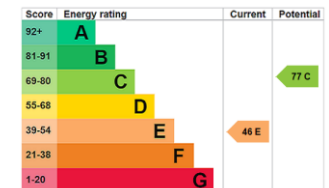
A modern one bedroom apartment situated within a converted period building.

The flat comprises an open-plan kitchen living area, a double bedroom with built in wardrobes and modern bathroom. All the windows in the property are South facing, allowing for plenty of natural light.

This property is ideally located just moments from Clapham Junction, ensuring excellent transport links across London. It also benefits from the vibrant local amenities of St John's Hill and Northcote Road, with an array of cafes, boutiques, and restaurants. For green spaces, Wandsworth Common and Clapham Common are just a short walk away.

- One Bedroom
- One Bathroom
- Kitchen / Reception Room
- Gated Entrance
- Long Lease

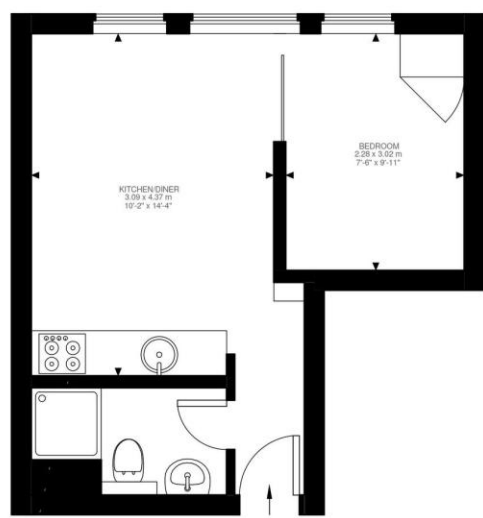
Asking Price £325,000



Tenure: Leasehold 950 years 9 months
Service Charge: £3200
Ground Rent: £0
Local Authority: London Borough of Wandsworth
Council Tax Band: B

Chestertons Battersea & Clapham Sales

6 Battersea Rise
 London
 SW11 1ED
 battersearise@chestertons.co.uk
 020 7924 4400
 chestertons.co.uk



Ground Floor
291 ft²

St Johns Hill, SW11
Approximate Gross Internal Area
27.04 SQ.M / 291 SQ.FT

Illustration for identification purposes only. Not to scale.
Floor Plan Drawn According To RICS Guidelines.

Chesterton UK Services Limited trading as Chestertons for themselves and for the vendor of this property whose agents they are, give notice that (i) these particulars do not constitute any part of an offer or contract, (ii) all statements contained within these particulars are made without responsibility on the part of Chestertons or the vendor, (iii) whilst made in good faith, none of the statements contained within these particulars are to be relied upon as a statement or representation of fact, (iv) any intending purchasers must satisfy themselves by inspection or otherwise as to the correctness of each of the statements contained within these particulars, (v) the vendor does not make or give either Chestertons or any person in their employment any authority to make or give representation or warranty whatsoever in relation to this property. Wide angle lenses may be used. ©Copyright Chestertons | Chesterton UK Services Limited | Registered Office 5th Floor, The Lantern, 75 Hampstead Road, London, NW1 2PL Registered Company Number 05334580.

