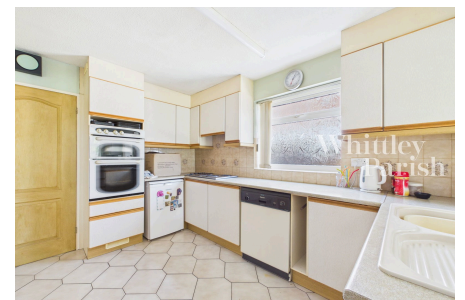


# The Street, Garboldisham, Diss IP22 2QN

Guide Price £425,000 - £450,000

4 1 2



Spacious four-bedroom detached home set within a sought-after village location, occupying a generous 0.3 acre plot. The property offers four well-proportioned bedrooms, with the principal suite benefitting from a dressing area and built-in wardrobes. The ground floor features a bright open-plan living/dining room and a well-sized kitchen, while outside there is an expansive rear garden. Further benefits include ample off-road parking via a generous driveway, as well as both an integral and a detached garage.

## Key Features

- Guide Price £425,000 - £450,000
- No onward chain
- Village location - walking distance to local amenities
- Integral garage & freestanding garage
- Driveway for parking
- Living room with separate dining room
- Spacious front and rear gardens, approx 0.30 acre plot
- Approx 1,650 sq ft of accommodation
- Family bathroom & separate WC
- EPC Rating TBC - Council Tax Band D

