
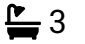





Property Webb  
At the HEART of your move

## Russell Road, Wester Inch, Bathgate, EH58 2GQ

Offers Over £360,000

 4  3  2



### Exceptional 'Stewart' Style Detached Family Home | Open Aspect Views | Generous Corner Plot

Occupying one of the largest plots on Russell Road, this immaculately presented 4 double bedroom detached 'Stewart' style home offers over 1,580 sqft of beautifully maintained family accommodation. Featuring four genuine double bedrooms, two en-suites including a Jack & Jill, spacious reception rooms, a generous kitchen with utility room, 1.5 size garage, double driveway and substantial gardens to the side and rear, this outstanding home is ready to move straight into.

 01506 637553

 [info@property-webb-co.uk](mailto:info@property-webb-co.uk)

 [www.property-webb.co.uk](http://www.property-webb.co.uk)

 71 South Bridge St, Bathgate, EH48 1TJ

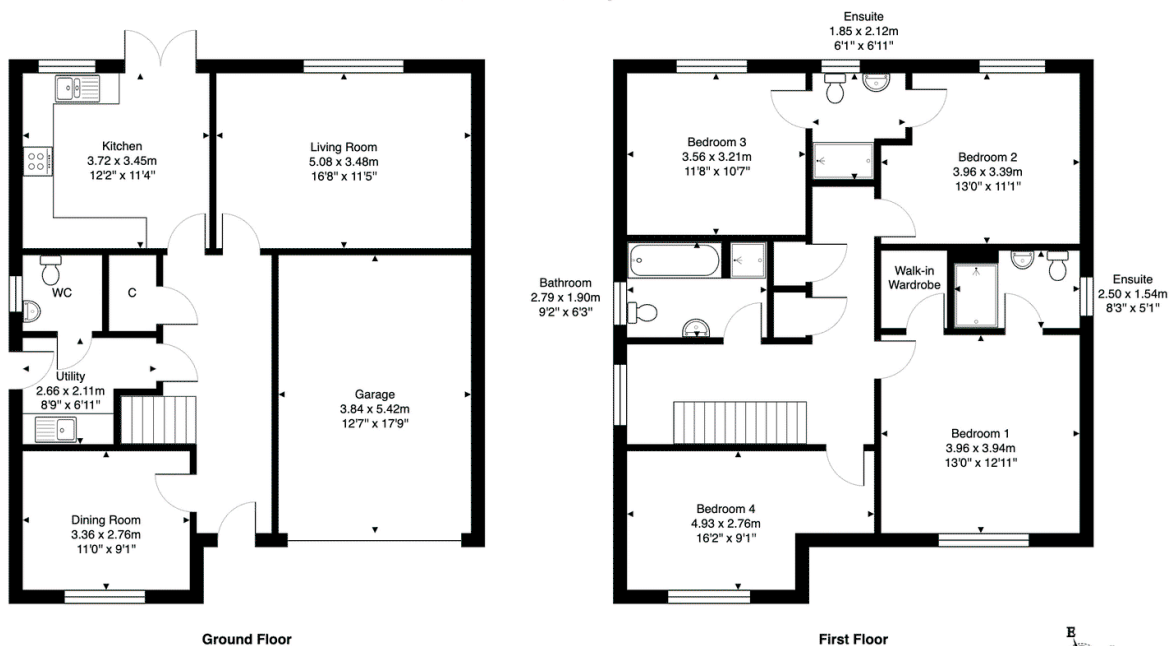


Property Webb  
At the HEART of your move

## Key Features

- Executive detached home
- 'The Stewart' style
- 2 reception rooms
- Modern kitchen/diner
- Separate utility & WC
- 4 Double bedrooms
- 4 piece family bathroom & 2 En-suites
- Large rear garden & generous sized plot
- 1.5 garage & double driveway
- Ready to move in family home

96 Russell Road, Wester Inch, Bathgate, EH48 2GG



Total Area: 149.3 m<sup>2</sup> ... 1607 ft<sup>2</sup> (excluding garage)  
All measurements are approximate and for display purposes only.

