



6 Three Cuppes Lane, St Edmunds Church Street, Salisbury, Wiltshire, SP1 1ER

£1,275 PCM

About The Property

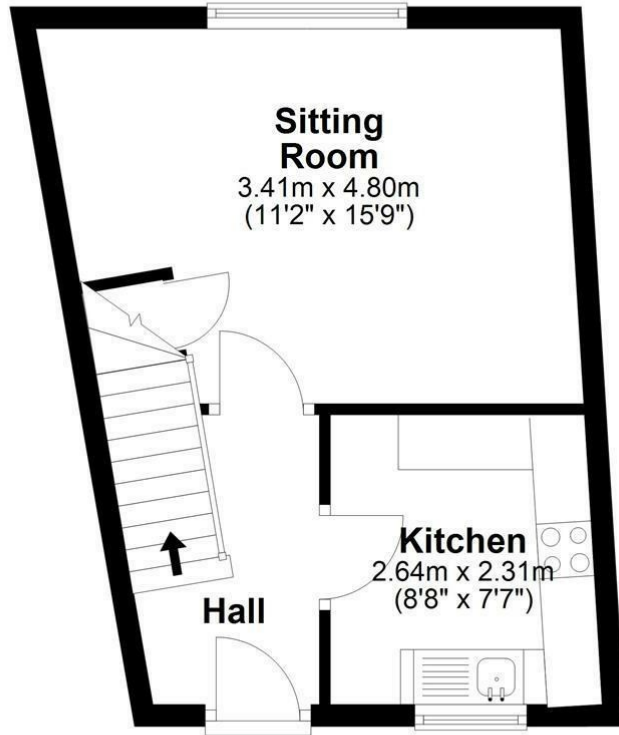
- Central Salisbury location
- Two double bedrooms
- Spacious sitting room/diner
- Fitted kitchen
- Modern shower room
- Large storage cupboard
- UPVC double glazing
- Electric heating
- Private single garage
- Communal gardens





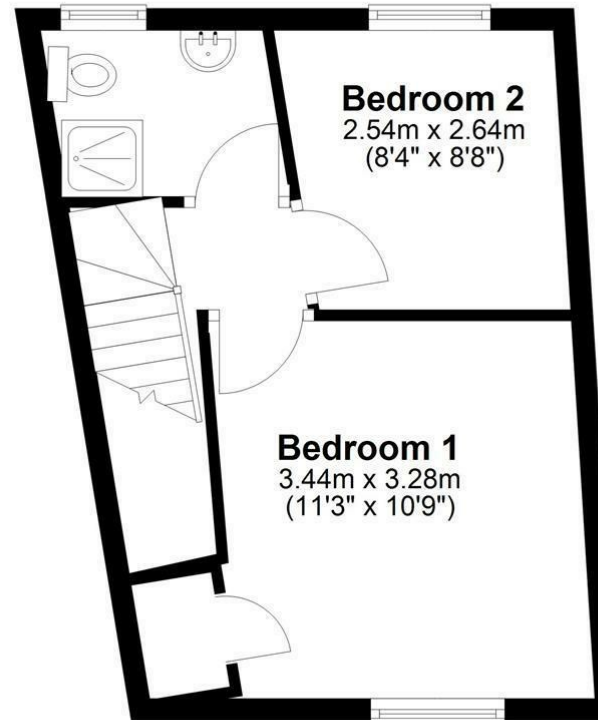
Ground Floor

Approx. 27.2 sq. metres (293.2 sq. feet)



First Floor

Approx. 26.5 sq. metres (285.0 sq. feet)



Total area: approx. 53.7 sq. metres (578.3 sq. feet)

Further Information

Let available date: 25th May 2026
NB: This date is provisional and will only be confirmed once referencing has been successfully completed.

Property type: House - End Terrace

Furnish type: Unfurnished

Deposit: £1,470

Local authority: Wiltshire Council

Council Tax: Band C

EPC: D(56)

Energy Efficiency Rating

	Current	Potential
Very energy efficient - lower running costs		
(92 plus) A		
(81-91) B		90
(69-80) C		
(55-68) D	56	
(39-54) E		
(21-38) F		
(1-20) G		
Not energy efficient - higher running costs		
England & Wales	EU Directive 2002/91/EC	