



Warwick Road, TW2

£2,450 Per calendar month

Please take a look at this delightful cottage which oozes character and is in need of a family to fill it. The property is on a friendly road so you won't be short of making a few friends.

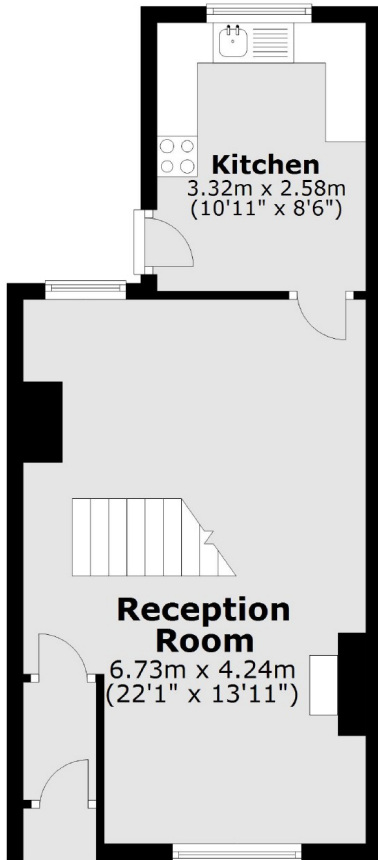
Warwick Road is a quiet cul-de-sac situated close to Twickenham Green and town centre. Twickenham mainline station has fast trains into London Waterloo and is approximately half a mile away.

Features

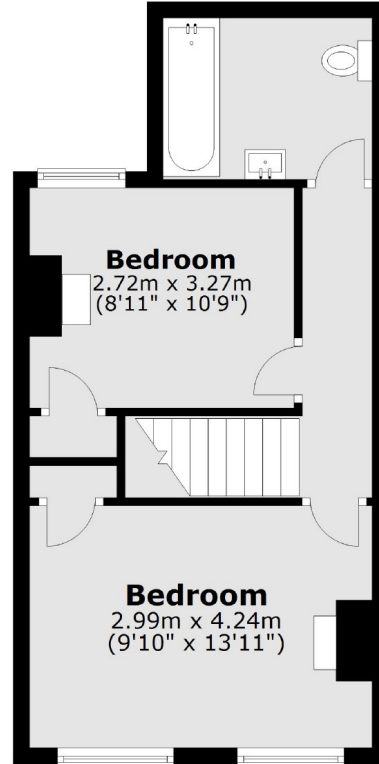
- Two Bedrooms
- Garden
- Family Location
- Local Supermarkets
- Large Lounge
- Managed by Dexters

Warwick Road,
Twickenham, TW2

Ground Floor



First Floor



Total area: approx. 72.1 sq. metres (775.9 sq. feet)