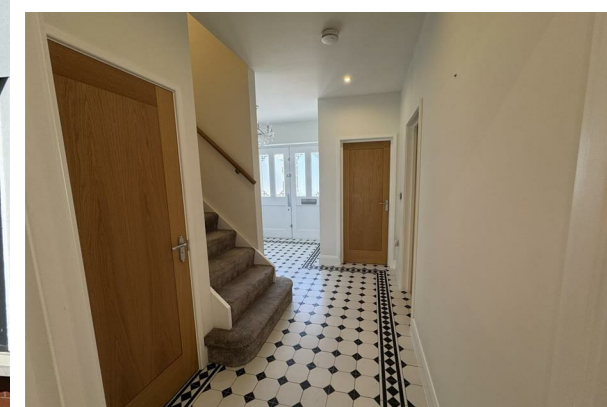




TO LET



105 Leigham Court Drive, Leigh-On-Sea, SS9 1PT

£2,850 Per Month

Brown & Brand



### Directions

### THE PROPERTY

Nestled in the charming area of Leigh-On-Sea, this contemporary semi-detached house on Leigham Court Drive offers a perfect blend of modern living and convenience. This impressive property provides ample space for families or those who enjoy entertaining.

Upon entering, you are greeted by a generous, light and airy reception hallway that sets the tone for the rest of the home. The large open plan lounge and kitchen diner is a standout feature, creating a welcoming atmosphere ideal for both relaxation and social gatherings. The kitchen is well-equipped, making it a delightful space for culinary enthusiasts.

This home boasts four spacious double bedrooms, two of which come with their own ensuite bathrooms, ensuring comfort and privacy for all occupants. Additionally, there is a beautifully appointed downstairs WC and a main family bathroom.

Storage is plentiful throughout the property, with cupboard space thoughtfully integrated to keep your living areas tidy and organised. Outside, the property offers parking for two vehicles, a valuable asset in this desirable location.

Situated in close proximity to Leigh Broadway, residents will enjoy easy access to a variety of shops, cafes, and local amenities, enhancing the appeal of this lovely home.

Council Tax Band E, EPC Rating C

### SITUATION