



**Stoneacre**  
Properties



**Portage Avenue, Leeds, LS15 0DY**

**£190,000**

Offered to the market for sale is this lovely semi detached bungalow. Situated in a popular area with views to the front across the green. This property also benefits from no onward chain. Comprising: sun room, utility, kitchen/diner, lounge, bedroom and bathroom. Externally there are gardens to the front and rear. To the side is off road parking that leads to a garage. Early viewings are strongly advised.

## Entrance/Sun Room



Door into utility.

## Utility Area



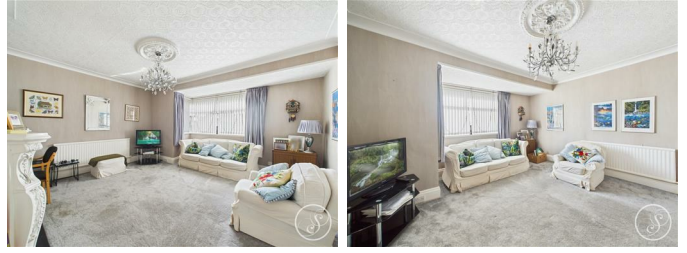
Fitted with wall and base units with work surfaces over. Central heating boiler.

## Kitchen/Diner



Fitted with a range of wall and base units with work surfaces over incorporating a sink and drainer unit. Built in oven and hob. Plumbing for washing machine. Space for dining table. Double glazed window and central heating radiator.

## Lounge



To the front is a double glazed window that provides views across the green. Central heating radiator. Fire with feature surround.

## Bedroom One



Double glazed window to front. Central heating radiator. Fitted wardrobes.

## Bathroom



Large bathroom comprising: bath with shower over, wc and vanity wash hand basin.

## External

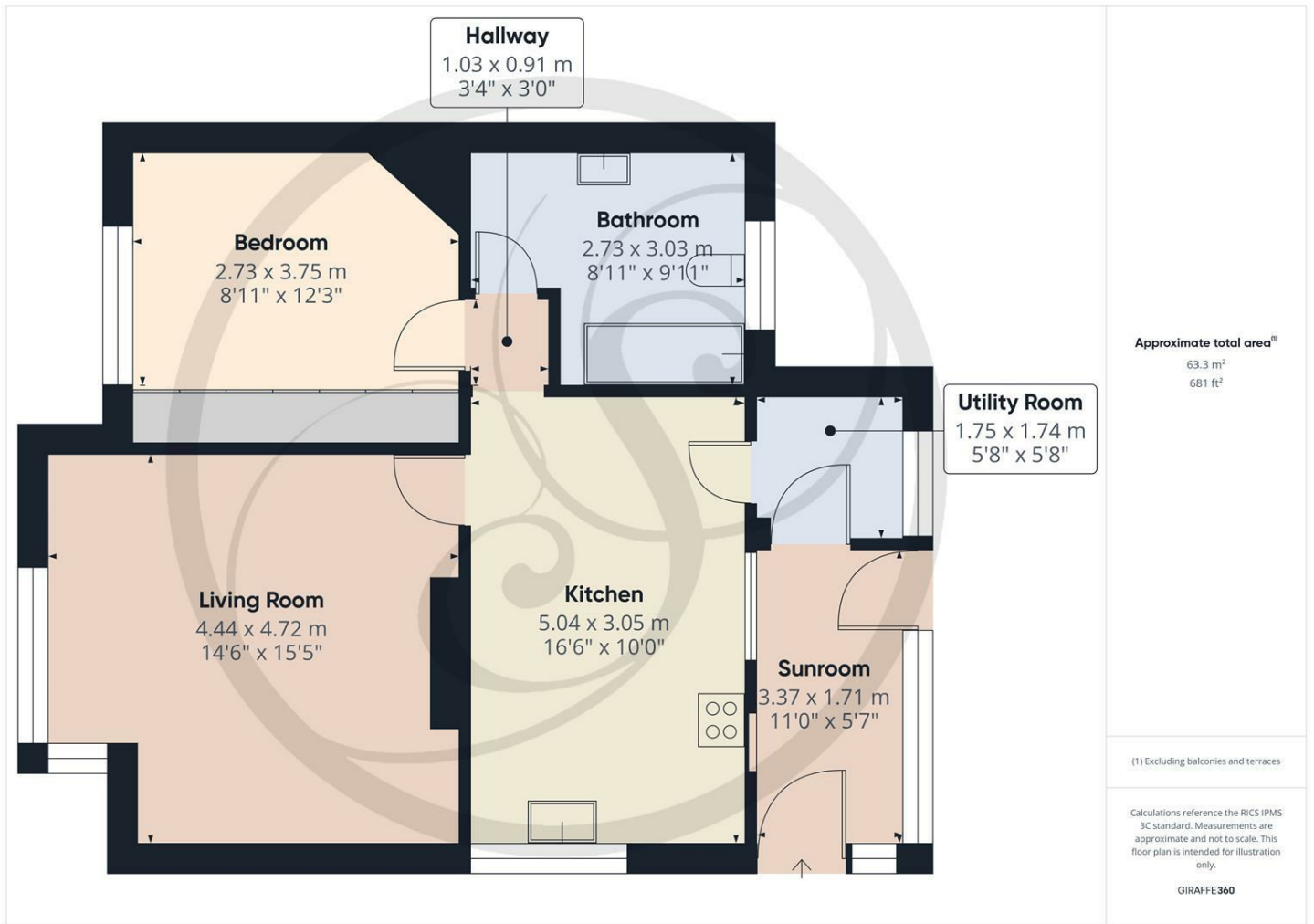


To the front and rear this property boasts gardens. To the side is a spacious driveway.

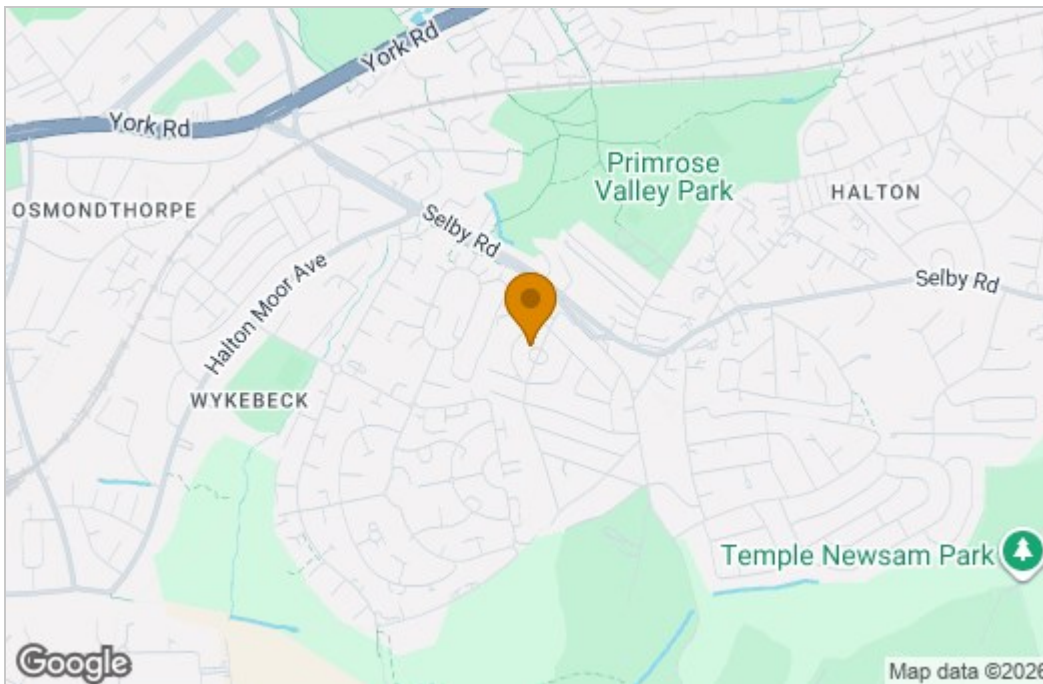
## Garage

Large garage ideal space to use as a workshop or ample additional storage.

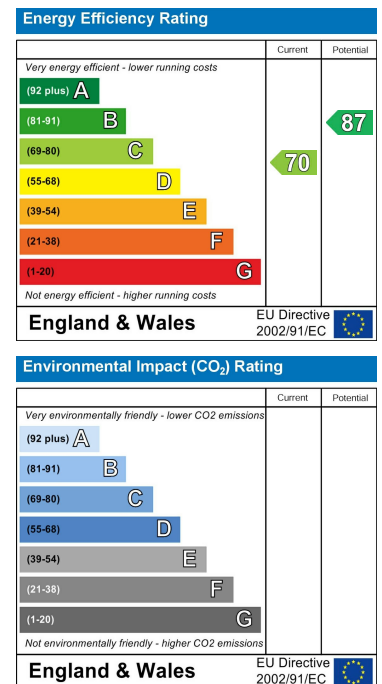
## Floor Plan



## Area Map



## Energy Efficiency Graph



These particulars, whilst believed to be accurate are set out as a general outline only for guidance and do not constitute any part of an offer or contract. Intending purchasers should not rely on them as statements of representation of fact, but must satisfy themselves by inspection or otherwise as to their accuracy. No person in this firm's employment has the authority to make or give any representation or warranty in respect of the property.

