

Robinswood Court, Horsham

Offers Over £140,000

2 1 1



A bright First Floor Apartment for the Over 55's with Lift Access to all floors, Two Bedrooms, private Balcony and No Onward Chain.

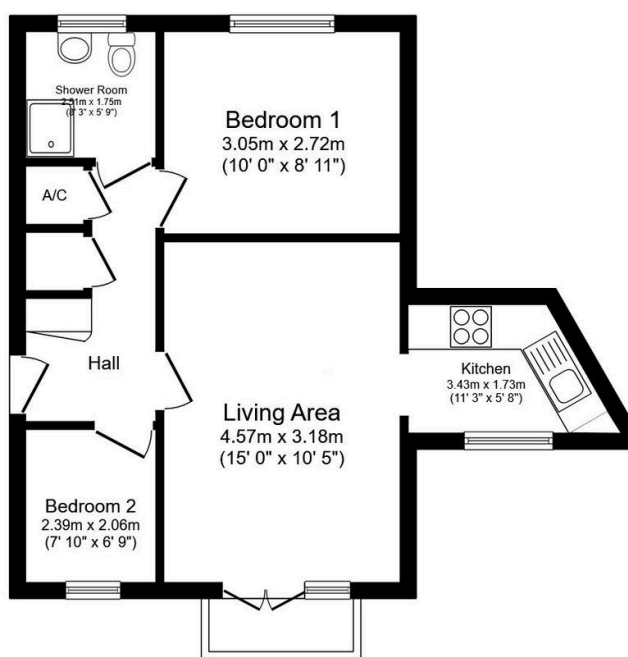
Tenure: Leasehold

Council Tax Band: C

EPC Rating: Current C - Potential B

Key Features

- Over 55's Apartment
- Two Bedrooms
- Shower Room With Window
- Beautiful Communal Grounds
- Good Bus Route
- Lift To All Floors
- Private Balcony
- No Onward Chain
- Excellent Storage
- Close To Local Shops



Floor Plan

Floor area 41.4 m² (446 sq.ft.)

TOTAL: 41.4 m² (446 sq.ft.)

This floor plan is for illustrative purposes only. It is not drawn to scale. Any measurements, floor areas (including any total floor area), openings and orientations are approximate. No details are guaranteed, they cannot be relied upon for any purpose and do not form any part of any agreement. No liability is taken for any error, omission or misstatement. A party must rely upon its own inspection(s). Powered by www.Propertybox.io