



Guide Price
£475,000

Freehold

4x  2x  2x 

**Laurel Grove,
Kingswood, Maidstone,
Kent, ME17**

OVER 60?

Secure this property
for up to **59% less!**

Wards
Helping you move forwards



Main features

- **Extended property presented in good condition with neutral décor throughout**
- **Fantastic semi open plan living spaces including sociable kitchen/ diner, separate dining room and generous lounge**
- **Large main bedroom with dressing room and en-suite shower room**
- **Located within the quiet village of Kingswood with easy access to the M20**

Accommodation

GROUND FLOOR

Entrance Hallway
 Kitchen/Breakfast Room: 15'4 x 15'0 (4.68m x 4.58m)
 Dining Room: 10'7 x 9'11 (3.23m x 3.02m)
 Lounge: 19'0 x 13'11 (5.80m x 4.24m)
 Cloakroom
 Utility
 Storage

FIRST FLOOR

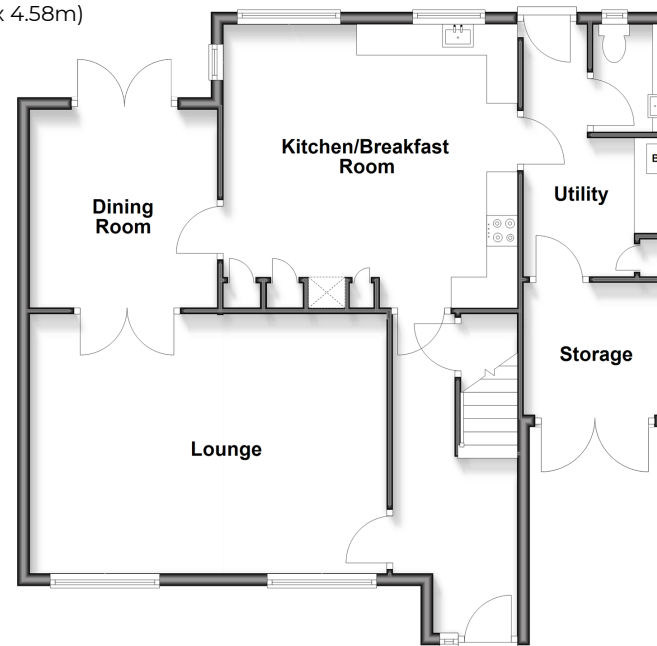
Landing
 Bedroom 1: 13'4 x 10'3 (4.07m x 3.13m)
 En-suite Shower Room
 Bedroom 3: 11'8 x 7'11 (3.56m x 2.41m)
 Bedroom 4: 12'0 x 7'4 (3.66m x 2.24m)
 Bedroom 2: 12'2 x 7'6 (3.71m x 2.29m)
 Bathroom

OUTSIDE

Front and Rear Gardens
 Driveway

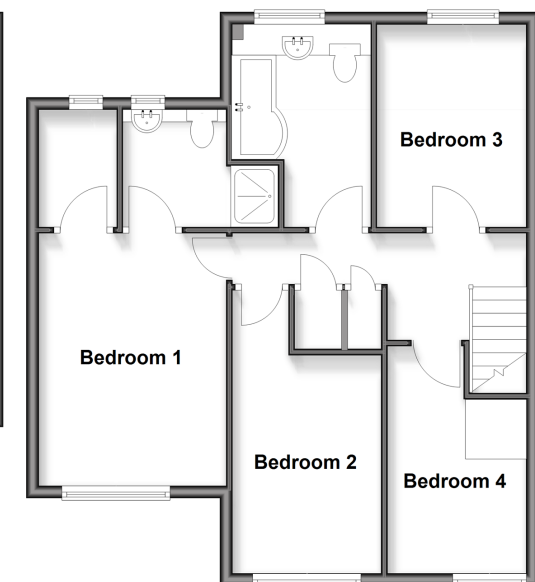
Ground Floor

Approx. 82.6 sq. metres (888.7 sq. feet)



First Floor

Approx. 61.4 sq. metres (661.1 sq. feet)



Call Headcorn - 01622 890435 ■ wardsof Kent.co.uk

■ Legal advice should be taken to verify fixtures/fittings, planning, alterations and/or lease details
 ■ Through a Homewise Home For Life Plan people aged 60+ can secure this property for up to 59% less, by purchasing a Lifetime Lease

■ Appliances & services are untested, dimensions are approximate and floor plans are not to scale



12720327/20260227/DB/HS1