



225 Plank Lane

, Leigh, WN7 4BB

£220,000

JonesPottsTaylor are delighted to present FOR SALE this three bedroom mews property. Situated in the sought after Pennington Marina development in Leigh, close to local schools, shops, amenities and transport links. The property briefly comprises of; entrance hallway, WC / cloakroom, kitchen and living / dining room with French doors opening to the rear garden. To the first floor are two double bedrooms, a single bedroom and a further family bathroom with three piece suite. Outside, the property benefits from enclosed, low-maintenance gardens to both the front and rear, with the rear garden enjoying a desirable south-facing aspect, along with two allocated car parking spaces. Viewings for this property are a must to appreciate the property location.

- Close To Transport And Network Links
- Off Road Parking
- Tenure - Freehold
- Nearly New Build
- Gas Central Heating
- UPVC Double Glazed Windows

Viewing

Please contact our Jones Potts Taylor Office on 01942 368600 if you wish to arrange a viewing appointment for this property or require further information.



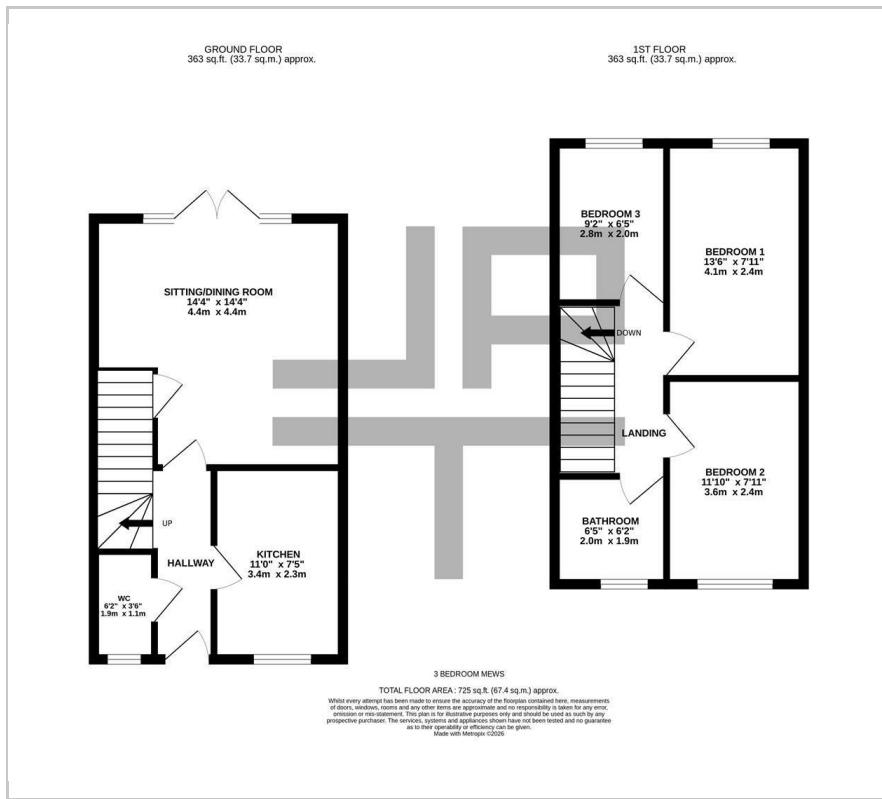
null



B



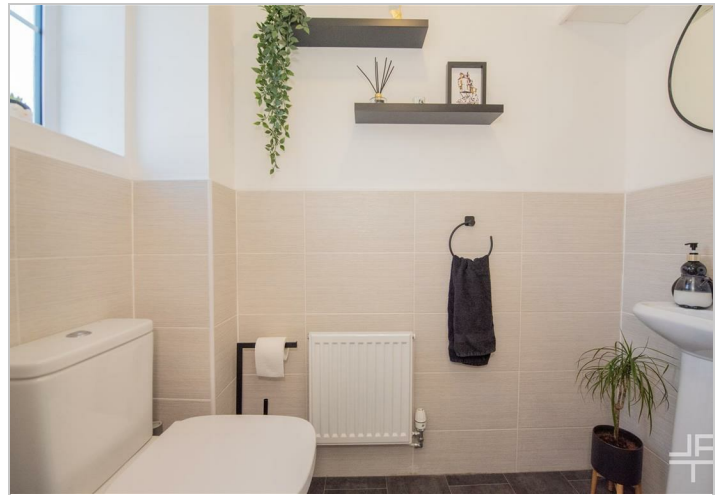
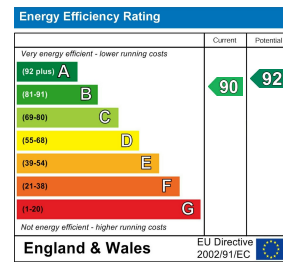
Floor Plan



Area Map



Energy Efficiency Graph



These particulars, whilst believed to be accurate are set out as a general outline only for guidance and do not constitute any part of an offer or contract. Intending purchasers should not rely on them as statements of representation of fact, but must satisfy themselves by inspection or otherwise as to their accuracy. No person in this firm's employment has the authority to make or give any representation or warranty in respect of the property.