



## DORA ROAD, SW19

£9,000 per month

Five bedrooms  
Four bathrooms  
Off-street parking  
Garage  
Semi-detached  
Energy rating: c

@marshandparsons  
marshandparsons.co.uk

MARSH &  
PARSONS

# ABOUT THE PROPERTY

A recently built, modern five/six bedroom townhouse in Wimbledon, with high specification fixtures and fittings. The accommodation has been set over four floors, with wooden floors throughout the ground floor. There is an open plan kitchen / dining room with doors to an enclosed patio area, spacious reception room, study, cloakroom, principal bedroom with en suite bathroom, four further double bedrooms, two with en suites and a family bathroom. The property also benefits from an additional annexe which is an ideal guest room or games room. The property further benefits from off-street parking and garage.

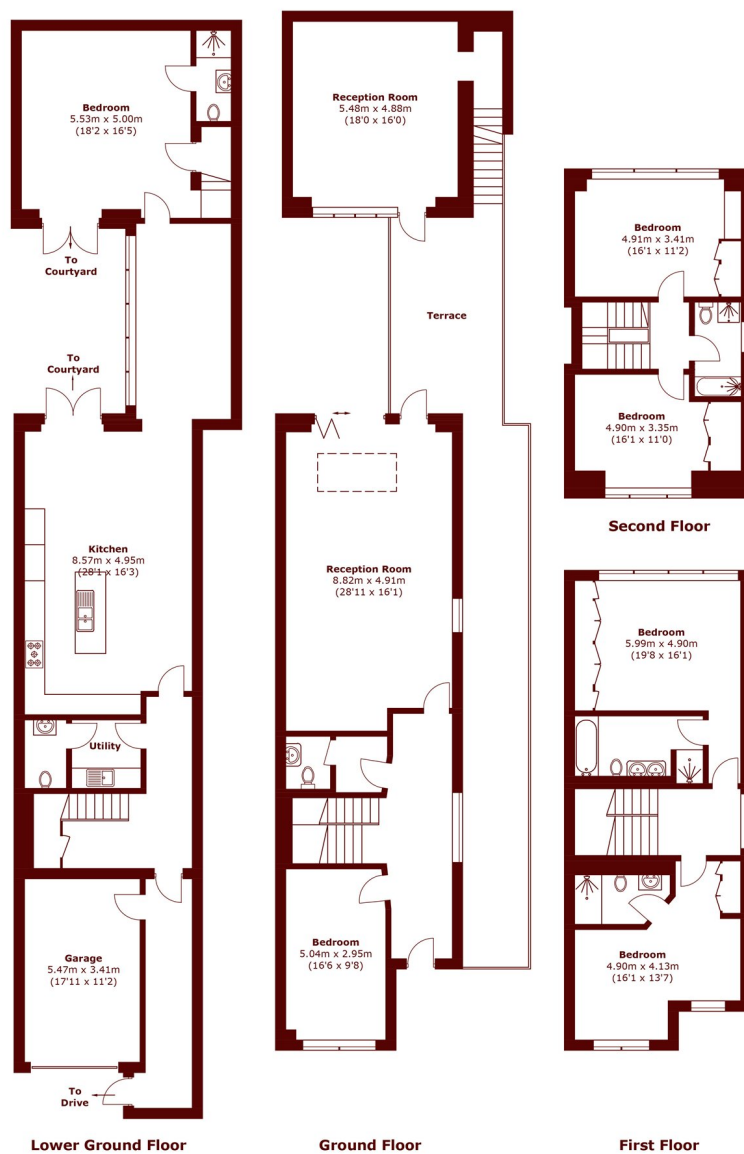








# STEP INSIDE DORA ROAD



Total area (approx.): 367.3 sq. m (3953.6 sq. ft)  
Terrace: 52.9 sq. m (569.4 sq. ft)

Wimbledon  
020 8879 6661

Energy Rating: C We aim to make our particulars both accurate and reliable. However, they are not guaranteed; nor do they form part of an offer or contract. If you require clarification on any points then please contact us, especially if you're traveling some distance to view. Please note that appliances and heating systems have not been tested and therefore no warranties can be given as to their good working order

MARSH &  
PARSONS