

JEFFERIES  
LONDON



PRIME REAL ESTATE  
Intelligent Brokering

**Gloucester Road, London, SW7**  
SW7 4QF / 51.491 N -0.180 W

*Guide Price £1,100,000*





**Upon entry, a welcoming hallway invites you into the heart of the apartment, leading to a stunning bay-fronted reception room.**

This stunning three-bedroom apartment is situated in this beautiful red brick Victorian mansion block, nestled in the vibrant heart of South Kensington.

**Three Bedrooms**

**Over 1,050 sq ft**

**Large Bathroom**

**Beautiful Bay Window**

**Beautifully Kept Building**

**Excellent Transport Links**



**Gloucester Road, London, SW7**

*Guide Price £1,100,000*



**This grand space is marked by impressive ceiling heights exceeding 3 metres, contributing to the room's sense of openness and airiness.**

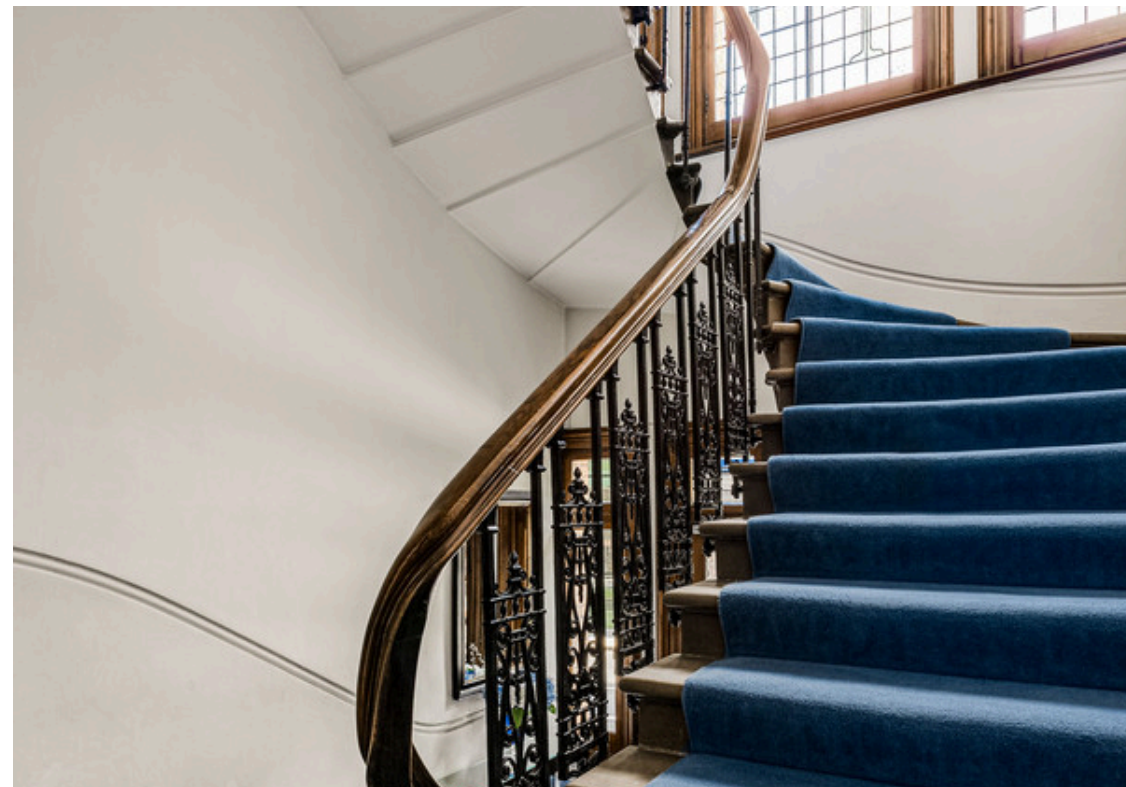
The reception room exudes character with its period fireplace, original wooden flooring, and practical built-in cupboards and shelves that provide both convenience and charm. Large windows allow natural light to pour in, creating a warm and inviting atmosphere perfect for both relaxing and entertaining.





**The apartment features three thoughtfully designed bedrooms. The principal bedroom, located at the rear of the property, is a serene and spacious retreat, boasting extensive wardrobe storage and wide sash bay windows that flood the room with natural light**

An additional double bedroom, also situated at the rear, offers plenty of storage and natural light, making it a versatile and comfortable space. The third bedroom, currently being used as a study, is perfectly positioned between the other two bedrooms, offering flexibility to cater to your needs.





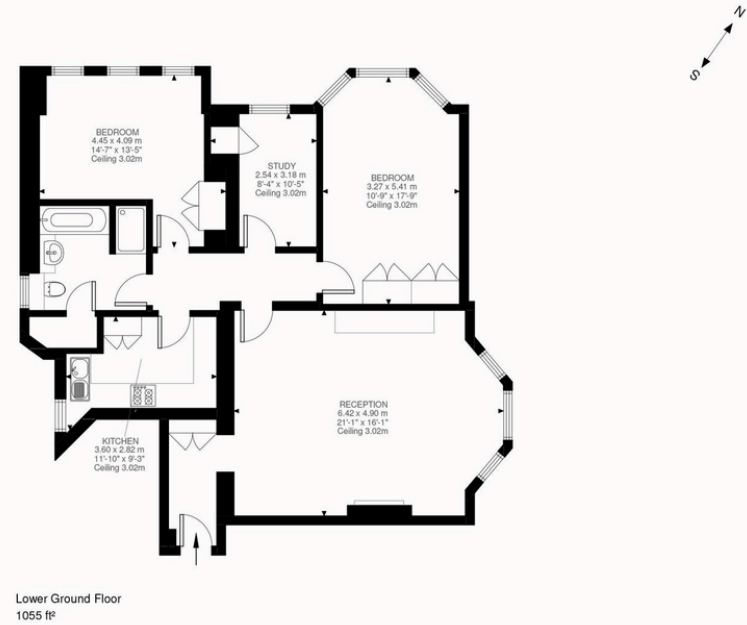
## FLOORPLAN

Tenure type: Share of Freehold

Council tax Band: G

Council authority:  
Kensington & Chelsea

EPC rating: D



Exclusive sales and marketing by

## **Jefferies London Prime Real Estate**

Jefferies London is a driving force in the luxury property market and one of the city's most successful sales, lettings and property management brokerages.

We manage every step of your real estate journey, so you'll always have one dedicated point of contact and a tailored team working behind the scenes, taking care of everything you need.

## **Intelligent Brokering**

For further information, please contact

07700103209  
hello@jefferies.london

JEFFERIES  
LONDON

---

PRIME REAL ESTATE

**Jefferies London**

Pavilion Fulham, 81-83 Fulham High Street, SW6 3JW