



Beechcroft Avenue Golders Green NW11

Monthly Rental Of £3,650



800 Finchley Road, Hampstead Garden Suburb, London, NW11 7TJ

020 8458 5000

sales@litchfields.com

www.litchfields.com

Offices also in Highgate



A stunning contemporary two double bed, 2 Bath Apartment situated on the raised ground floor of this recently built development boasting modern and spacious interiors throughout with hard wood floors and doors and luxury kitchen & bathrooms, further benefits include communal garden and secure underground parking. A short walk to the extensive shops, restaurants, supermarkets, cafes & bars of Golders Green and the underground station on the Northern Line. Golders Hill Park & the Heath Extension are in close proximity too. Early viewing of this lifestyle home is strongly recommended! Unfurnished. EPC B



2

2

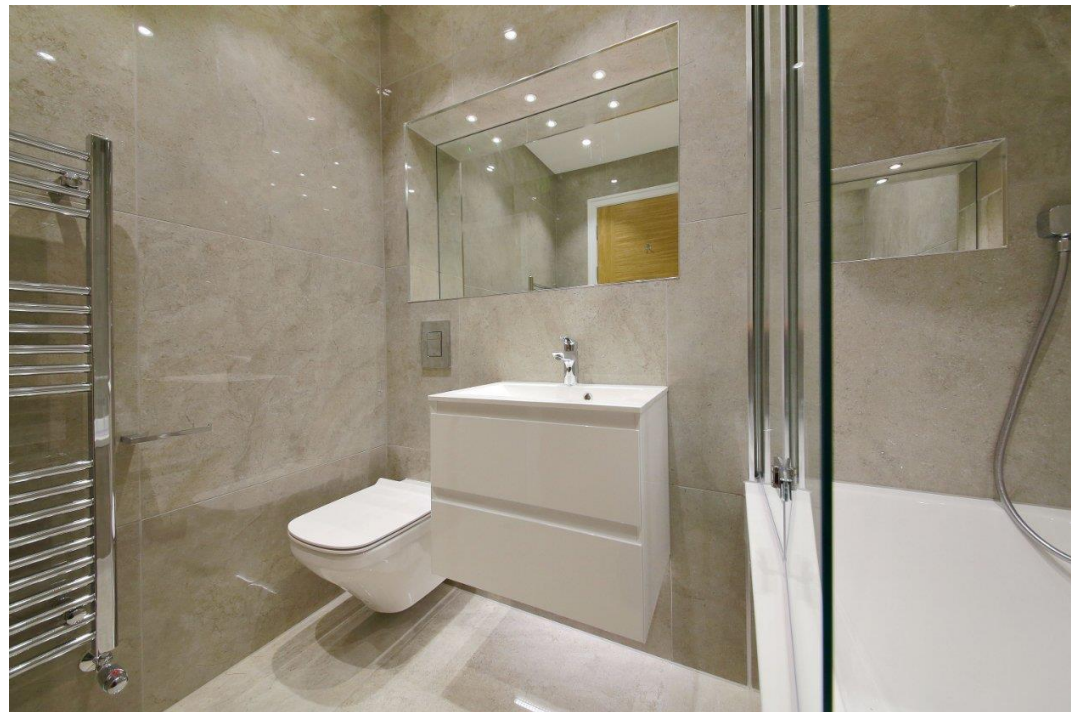
1

B



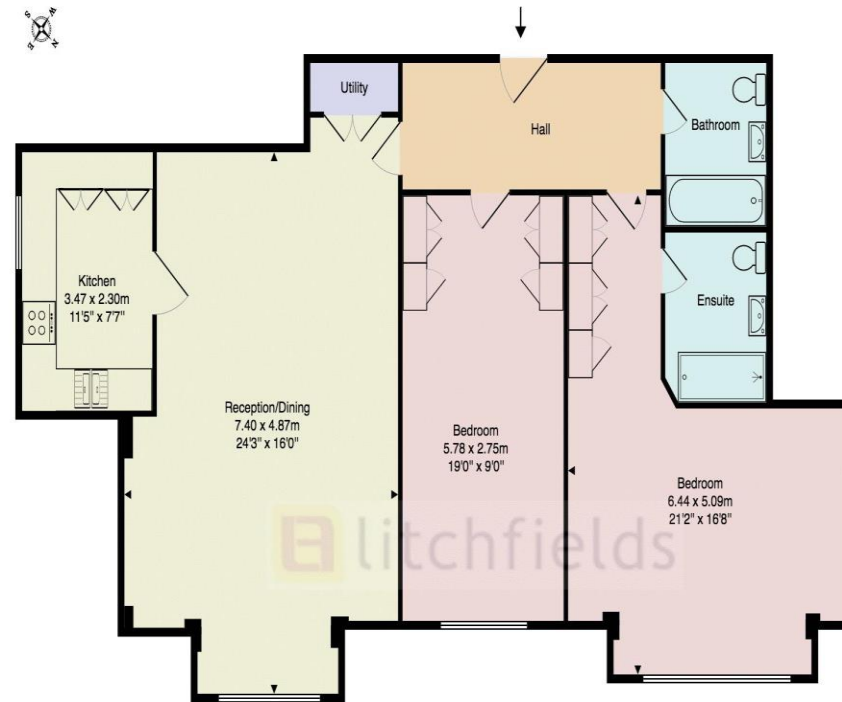
- Stunning 2 Double Bed, 2 Bath Apartment
- Large Reception
- Master Bedroom with Luxury e/s Shower room
- Fully Integrated Kitchen
- Hard Wood Floors
- Short Walk Golders Green Tube & High Street
- Secure Underground Parking Space
- Entryphone
- Communal Gardens
- Unfurnished







Flat 5 Beechcroft Avenue



First Floor

Gross Internal Area: 97.7 m² ... 1052 ft²

Dimensions are approximate for display purposes only.
Created in accordance with the RICS Code of Measuring Practice.
(c) Peninsula Surveys Ltd.



800 Finchley Road, Hampstead Garden Suburb, London, NW11 7TJ

020 8458 5000

sales@litchfields.com

www.litchfields.com

Offices also in Highgate

litchfields limited registered in england no.2373684 registered office 470a Green Lanes, London, N13 5PA