



Connells

Brockman Place
Church Street Maidstone

Brockman Place Church Street Maidstone ME14 1BX

for sale offers over
£170,000



Property Description

A stylish one-bedroom apartment perfectly positioned on Church Street, in the heart of Maidstone town centre. This contemporary home offers a bright and spacious open-plan living and kitchen area, designed for modern living, with large windows and a private balcony that floods the space with natural light.

The bedroom is generously sized, complemented by a sleek, modern bathroom with a full suite and shower over bath. The property also benefits from allocated parking, secure entry, and excellent energy efficiency.

Location highlights: Brockman Place is just 0.2 miles from Maidstone East station, providing direct trains to London Victoria in around an hour, making it an excellent choice for commuters. Maidstone Barracks and Maidstone West stations are also nearby, and the M20 motorway is easily accessible for drivers.

Living here means enjoying everything Maidstone has to offer: high street shopping, cafés, restaurants, and leisure facilities are all within walking distance. Mote Park, the River Medway, and cultural attractions like the Hazlitt Theatre are close by. For those seeking connectivity and convenience, this property ticks all the boxes.



Entrance Hall

Lounge/Dining/Kitchen Area

Lounge/Dining Area

17' 2" Max x 13' 6" Max (5.23m Max x 4.11m Max)

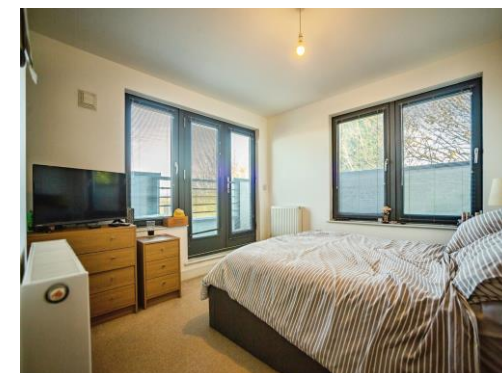
Kitchen Area

17' Max x 6' 5" Max (5.18m Max x 1.96m Max)

Bedroom

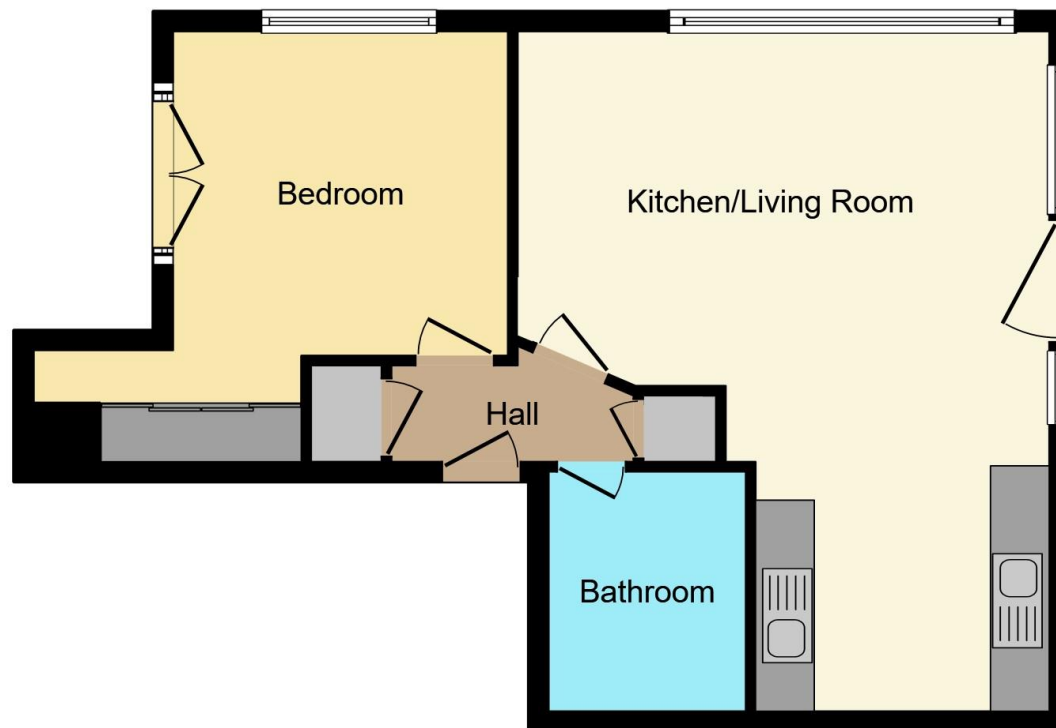
14' x 11' 1" (4.27m x 3.38m)

Bathroom









Total floor area 54.1 m² (582 sq.ft.) approx

This floor plan is for illustrative purposes only. It is not drawn to scale. Any measurements, floor areas (including any total floor area), openings and orientation are approximate. No details are guaranteed, they cannot be relied upon for any purpose and they do not form part of any agreement. No liability is taken for any error, omission or misstatement. A party must rely upon its own inspection(s). Powered by www.propertybox.io

Connells

To view this property please contact Connells on

T 01622 751034
E maidstone@connells.co.uk

30 King Street
 MAIDSTONE ME14 1BS

EPC Rating: C

Council Tax
 Band: C

Service Charge:
 1384.00

Ground Rent:
 Ask Agent

Tenure: Leasehold

view this property online connells.co.uk/Property/MAI407879

This is a Leasehold property with details as follows; Term of Lease 999 years from 01 Jan 2018. Should you require further information please contact the branch. Please Note additional fees could be incurred for items such as

1. MONEY LAUNDERING REGULATIONS Intending purchasers will be asked to produce identification documentation at a later stage and we would ask for your co-operation in order that there will be no delay in agreeing the sale. 2. These particulars do not constitute part or all of an offer or contract. 3. The measurements indicated are supplied for guidance only and as such must be considered incorrect. Potential buyers are advised to recheck measurements before committing to any expense. 4. We have not tested any apparatus, equipment, fixtures, fittings or services and it is in the buyers interest to check the working condition of any appliances.

Connells Residential is registered in England and Wales under company number 1489613, Registered Office is Cumbria House, 16-20 Hockliffe Street, Leighton Buzzard, Bedfordshire, LU7 1GN. VAT Registration Number is 500 2481 05.



See all our properties at www.connells.co.uk | www.rightmove.co.uk | www.zoopla.co.uk

Property Ref: MAI407879 - 0009