

# Coronation Road

Maidenhead • • SL6 3RA

Guide Price: £764,000



coopers  
est 1986



# Coronation Road

Maidenhead • • SL6 3RA

Charming three-bedroom detached family residence nestled in the heart of the picturesque English village of Littlewick Green

Detached family home

Renovated to a high standard

Sought-after location

Spacious driveway

Utility room

Underfloor heating in Kitchen

En-suite to master bedroom

Quintessential English village

Modern kitchen with integrated appliances

Close proximity to renowned amenities

These particulars are intended as a guide and must not be relied upon as statements of fact. Your attention is drawn to the Important Notice on the last page.







### Property

The home has been renovated in recent years and features a generous entrance hall, a large living room with a wood burner stove, a dining room with bifold doors opening onto the patio, a contemporary kitchen/breakfast bar with underfloor heating and French doors leading to the rear, a utility room, a downstairs cloakroom and a garage.

On the first floor, the home features a family bathroom and three spacious bedrooms with the master bedroom benefiting from a modern en-suite shower room

### Outside

At the front of the house, you'll find a generously sized block-paved driveway framed by landscaped shrubs. The property also includes side access to the rear garden, which boasts a well-designed patio, a wooden gazebo, and lush foliage along the perimeter.

### Location

Nestled in the heart of a quintessential English village, Kents Bank boasts a prime location close to the Cricket Clubhouse, offering picturesque views of the village green and cricket pitch. Residents enjoy close proximity to renowned amenities, including The Cricketers pub, Montessori and theatre schools, and shopping and recreational options in nearby Maidenhead.

The area benefits from excellent transport links, with Maidenhead train station, the M4, M40, A404, and the new Elizabeth Line ensuring effortless commuting and travel. Additionally, the region provides a rich array of educational facilities, equestrian activities, and outdoor pursuits, catering to a fulfilling lifestyle for residents of all ages.



### Schools:

Burchetts Green CofE Infants' School 0.7 miles  
 Knowl Hill Church of England Primary Academy 0.9 miles  
 White Waltham CofE Academy 1.8 miles



### Train:

Maidenhead Station 3.0 miles  
 Furze Platt Station 3.1 miles  
 Wargrave Station 3.8 miles



### Car:

M4, A40, M25, M40



### Council Tax Band:

F

(Distances are straight line measurements from centre of postcode)



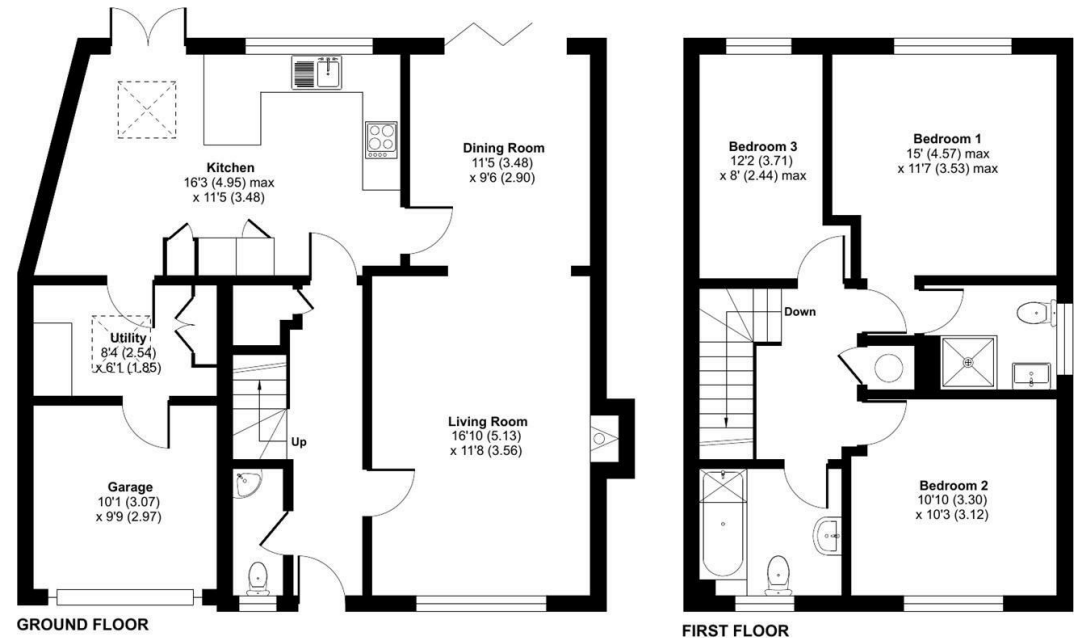
## Coronation Road, Littlewick Green, Maidenhead, SL6

Approximate Area = 1183 sq ft / 109.9 sq m

Garage = 155 sq ft / 14.3 sq m

Total = 1338 sq ft / 124.2 sq m

For identification only - Not to scale



Floor plan produced in accordance with RICS Property Measurement Standards incorporating International Property Measurement Standards (IPMS2 Residential). © nrichcom 2024. Produced for Coopers. REF: 1161008

**coopers**  
est 1986

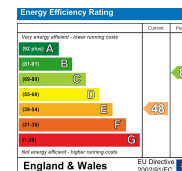
**coopers**  
est 1986

01628 232 550

42 Queen Street, Maidenhead,  
SL6 1HZ

maidenhead@coopersresidential.co.uk

**CoopersResidential.co.uk**



Important Notice: These particulars, whilst believed to be accurate are set out as a general outline only for guidance and do not constitute any part of an offer or contract. Intending purchasers should not rely on them as statements or representation of fact, but must satisfy themselves by inspection or otherwise has the authority to make or give any representation or warranty in respect of the property.