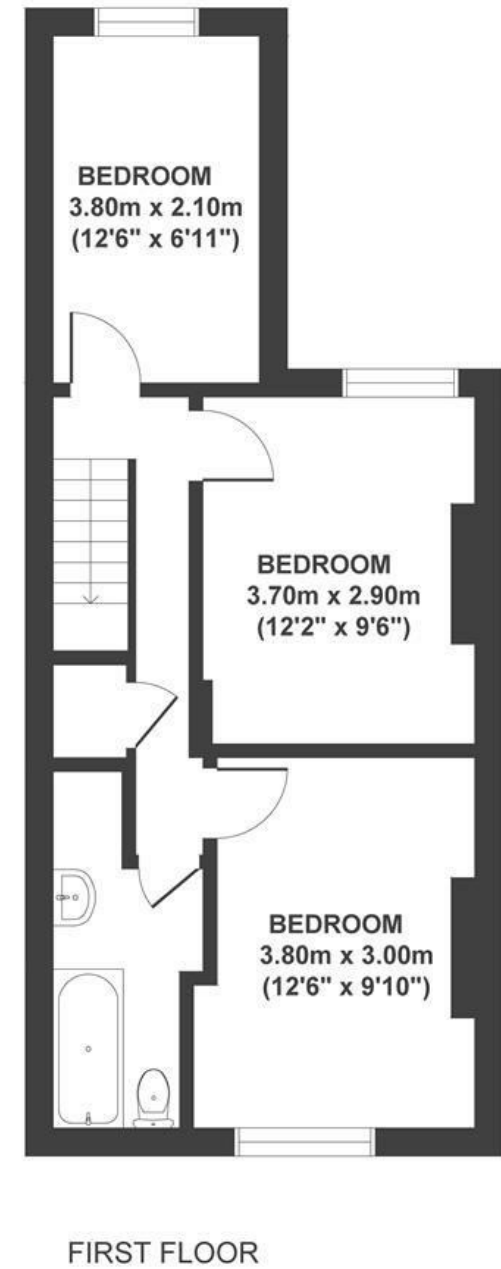
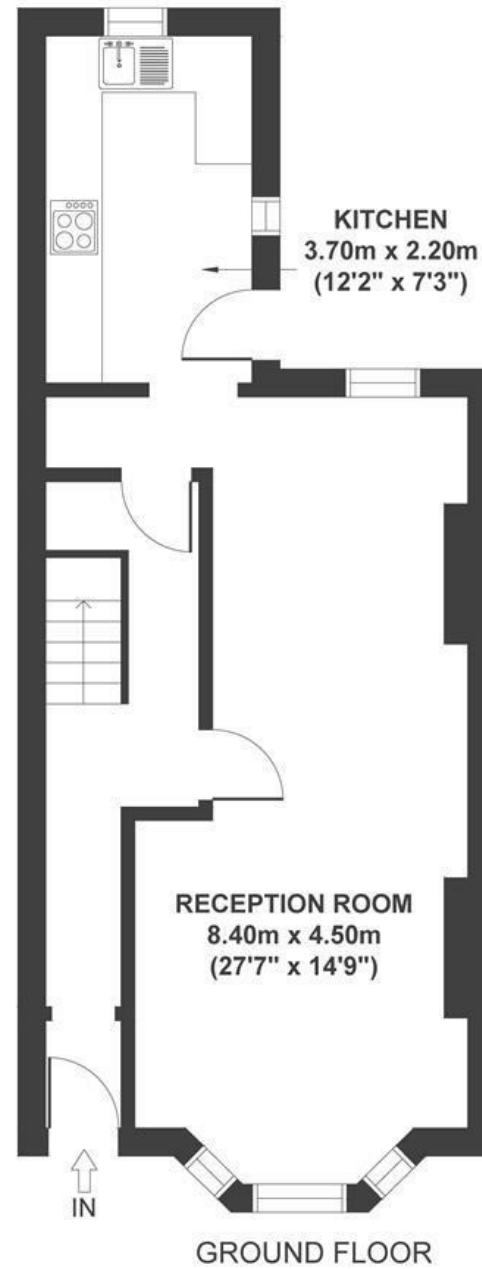


# Clyde Road

## TOTTERDOWN

APPROXIMATE FLOOR AREA  
87 SQM / 936 SQFT



**Boardwalk**

# Clyde Road

KNOWLE, BRISTOL

£

£440,000

z z z

3 Bedrooms



BS4 3DH



2 Bathrooms

*"We love Clyde road, especially being so close to the city as well as green spaces like Arnos Vale, perfect for dog walking. It is just a short stroll to Wells Rd with all its shops and restaurants - we particularly like A Cappella café and pizzeria for breakfast or dinner a few minutes away. Hill Crest Primary school is a short walk just a couple of streets away and there is a lovely community feel to the road, with neighbours often outside chatting. A great place to live."*

