



Arrow Close

Guide Price £400,000 to £410,000

- Open-Plan Kitchen/Diner
- Unique Living Room
- Single Garage
- Driveway for Two Vehicles
- Enclosed Rear Garden
- Within Walking Distance of Schools, Shops and Local Amenities
- Excellent Transport Links via the M4, Bus Routes and Newport Train Station



 4  2  1

Pinkmove

01633 746088
team@pinkmove.co.uk



About the property

Situated in a quiet cul-de-sac on Arrow Close, Newport, this attractive detached home offers spacious and modern living, ideal for families.

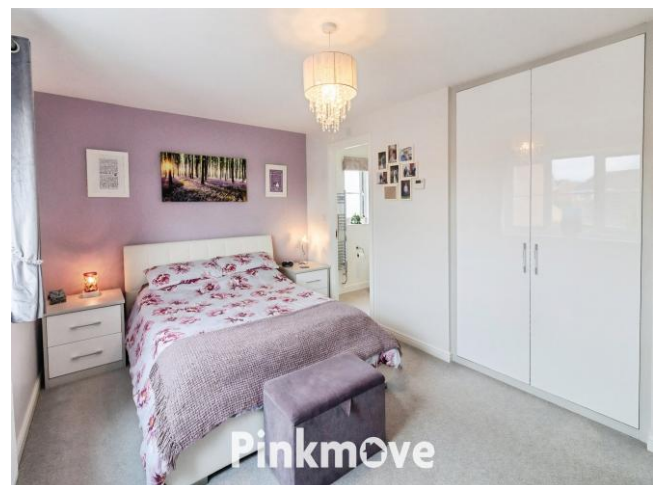
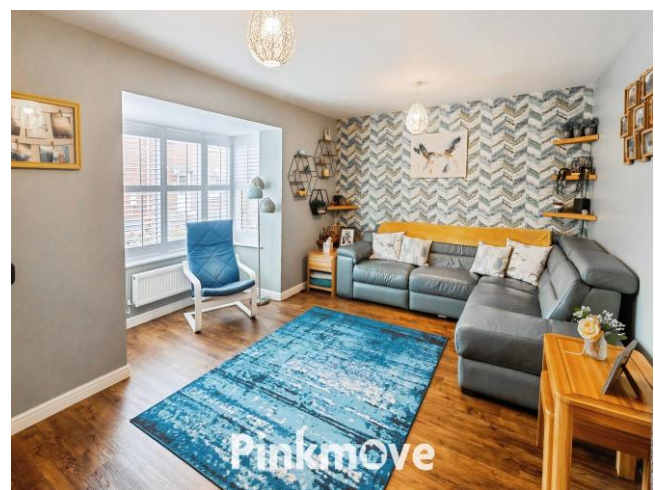
Upon entry, a stylish living room sits to the left, featuring a glass partition that adds a unique and contemporary touch. To the rear, a large open-plan kitchen/diner opens onto a generous enclosed garden—perfect for entertaining or relaxing. A utility room leads off the kitchen, and a convenient downstairs WC completes the ground floor.

Upstairs, there are four well-proportioned bedrooms, including a master with en suite, alongside a modern family bathroom.

Outside, the property benefits from a private rear garden, a single garage, and a driveway with space for two cars.

The location is particularly appealing, with excellent access to local amenities and transport links. St Michael's RC Primary School is within walking distance, and Ysgol Gyfun Gwent Is Coed is just over a mile away. Healthcare facilities such as St David's Clinic and the Royal Gwent Hospital are also nearby. For shopping and leisure, Friars Walk and Newport Market offer a variety of retail and dining options, while Belle Vue Park provides a scenic spot for outdoor relaxation.

Commuters will appreciate the proximity to Newport city centre and the M4 motorway, as well as regular train services from Newport Station connecting to Cardiff, Bristol, and beyond.





Accommodation

Living Room

13' x 16' (3.96m x 4.88m)
Max Measurements

Downstairs Wc

4' 8" x 3' 9" (1.42m x 1.14m)

Kitchen/Diner

9' 9" x 25' 4" (2.97m x 7.72m)

Utility Room

4' 8" x 7' 8" (1.42m x 2.34m)

Bedroom 1

9' 10" x 16' (3.00m x 4.88m)

En-Suite

5' 2" x 7' 5" (1.57m x 2.26m)

Bedroom 2

11' x 12' 1" (3.35m x 3.68m)
Max Measurements

Bedroom 3

10' x 9' 8" (3.05m x 2.95m)

Bedroom 4

10' x 9' (3.05m x 2.74m)
Max Measurements

Bathroom

6' 3" x 7' (1.91m x 2.13m)

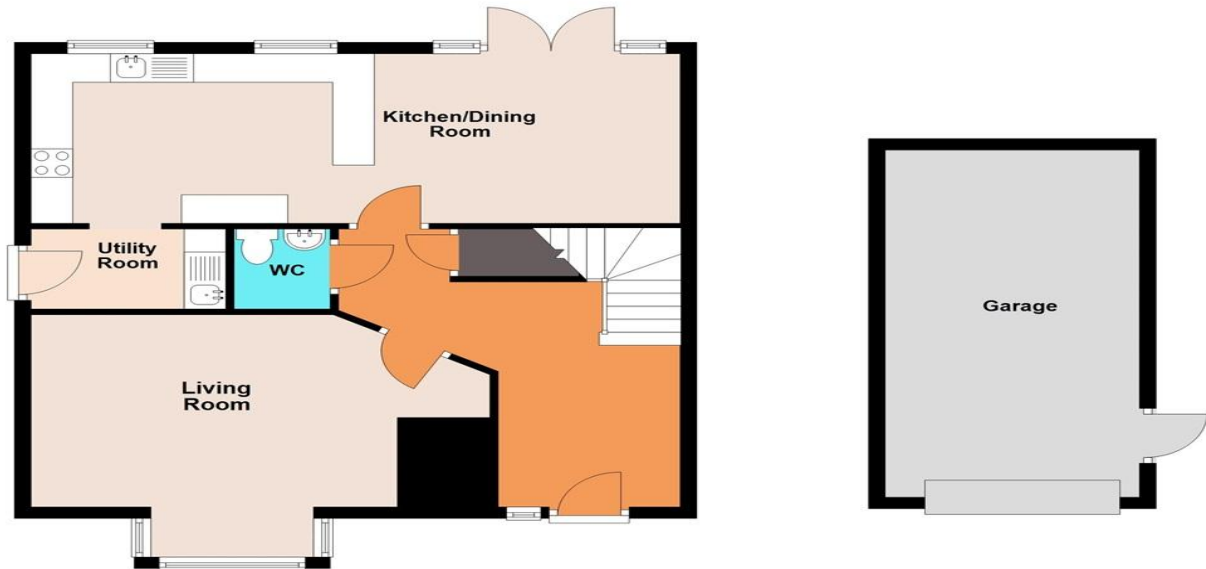
Garage

20' x 10' (6.10m x 3.05m)

Floorplan

Ground Floor

Approx. 82.4 sq. metres (886.9 sq. feet)



First Floor

Approx. 60.6 sq. metres (651.9 sq. feet)



Total area: approx. 143.0 sq. metres (1538.8 sq. feet)
19 Arrow Close

Important Information

Note while we endeavour to make our sales details accurate and reliable, if there is any point which is of particular interest to you, please contact the office and we will be pleased to confirm the position for you. We have not personally tested any apparatus, equipment, fixtures, fittings or services and cannot verify they are in working order or fit for their purposes. Nothing in these particulars is intended to indicate that carpets or curtains, furnishings or fittings, electrical goods (whether wired or not). Gas fires or light fittings or any other fixtures not expressly included form part of the property offered for sale. This computer generated Floorplan, if applicable, is intended as a general guide to the layout and design of the property. It is not to scale and should not be relied upon for dimensions. Tenure: We cannot confirm the tenure of the property as we have not had access to the legal documents. The buyer is advised to obtain verification from their solicitor or surveyor.

Peter Alan Limited is registered in England and Wales under company number 2073153, Registered Office is Cumbria House, 16-20 Hockliffe Street, Leighton Buzzard, Bedfordshire, LU7 1GN. VAT Registration Number is 500 2481 05. For activities relating to regulated mortgages and non-investment insurance contracts, Peter Alan Limited is an appointed representative of Connells Limited which is authorised and regulated by the Financial Conduct Authority. Connells Limited's Financial Services Register number is 302221. Most buy-to-let