

Property details approval form

6 Woodward Street, West Bromwich, West Midlands, England, B71 4AP

Date: 01 July 2026

Property Ref and Version: WBW311527 - 0002

Not for marketing purposes INTERNAL USE ONLY

Selling your home with us!

○ Let's get your property sold!

After visiting your property we have compiled this document to show you all of the information we have gathered, including all images. We just need you to review this document to make sure everything we say in here is accurate before we officially begin marketing your home.

What is covered in this marketing approval form:

1. Price
2. Key Features
3. Short Description
4. Long Description
5. Room Description
6. Directions
7. Property Images
8. Floor Plan

The information within this document will be used within our property particulars and on the internet; the format of how this information is displayed may be subject to change.

Property details approval form

6 Woodward Street, West Bromwich, West Midlands, England, B71 4AP

Date: 01 July 2026

Property Ref and Version: WBW311527 - 0002

○ Price

£550,000

Tenure: Freehold

○ Key Features

- > Energy Rating: B
- > NEW BUILD
- > OPEN PLAN KITCHEN DINER
- > EN SUITE TO MASTER
- > FOUR DOUBLE BEDROOMS
- > OFF ROAD PARKING
- > NO UPWARD CHAIN
- > WALKING DISTANCE TO SANDWELL VALLEY

○ Short Description

****STUNNING DETACHED PROPERTY NEAR SANDWELL VALLEY PARK**** This beautifully presented and well maintained family home benefits from SPACIOUS BEDROOMS and OPEN PLAN KITCHEN DINER. Comprising of double bedrooms, off road parking and open plan kitchen diner!

○ Long Description

This beautifully present family home is located on one of the most sought after residential roads within West Bromwich. Woodward Street is accessible via Dagger Lane and is just a stones throw away from the entrance of Sandwell Valley. This means you have the best of both worlds from open green spaces on your doorstep, to major bus, train and tram links all within walking distance. The popular and vibrant New Square shopping centre provides all of your shopping needs along with family run businesses on the High Street. Sandwell & General hospital along with Eaton Valley Primary School are both within walking distance so look no further!

As you enter the property you are welcomed by a spacious and light entrance hall with access to the lounge a downstairs W.C, an large living room with double doors opening up to the fitted open plan kitchen diner with an island and fitted appliances and access to the separate utility room. The first floor offers four double bedrooms and with an en suite to the master and a separate family bathroom. The rear garden offers a low maintenance space with off road parking to the front for several cars. The property also benefits from have 3 CCTV cameras included and underfloor heating to the ground floor.

CALL US NOW TO ARRANGE YOUR VIEWINGS!

Property details approval form

6 Woodward Street, West Bromwich, West Midlands, England, B71 4AP

Date: 01 July 2026

Property Ref and Version: WBW311527 - 0002

○ Directions

○ Agents Note

Property details approval form

6 Woodward Street, West Bromwich, West Midlands, England, B71 4AP

Date: 01 July 2026

Property Ref and Version: WBW311527 - 0002

○ Room Description

Approach

The property is approached via drop curb giving access for off road parking for several cars, an electric charging point and access to the rear garden.

Hallway

With a composite door to the front, under floor heating, stairs rising to the first floor, access to the lounge, kitchen and the downstairs W.C.

Lounge

24' 1" x 11' 3" (7.34m x 3.43m)

With a double glazed bay window to the front, underfloor heating and double doors opening to the kitchen diner.

Kitchen Diner

20' x 18' 3" (6.10m x 5.56m)

A large open plan kitchen diner with a range of wall and base units, separate island with storage unit, fitted double oven, hob, microwave, dishwasher, space for a double fridge freezer with a water connection, cooker hood, underfloor heating and french doors to the rear garden.

Utility

8' 6" x 6' 7" (2.59m x 2.01m)

With a double glazed window to the rear, water tank, boiler and plumbing points.

Landing

With stairs rising from the hallway and access to all four bedrooms and the main family bathroom.

Bedroom One

12' 6" Max x 10' 6" (3.81m Max x 3.20m)

With a double glazed window to the rear, gas central heated radiator and access to the en suite.

En Suite

A fitted suite to comprise of a shower cubicle, low level W.C, wash hand basin, gas central heated radiator and a double glazed window to the side.

Bedroom Two

14' 4" x 10' 7" (4.37m x 3.23m)

With a double glazed window to the front and a gas central heated radiator.

Bedroom Three

12' 1" x 7' 3" (3.68m x 2.21m)

With a double glazed window to the rear and a gas central heated radiator.

Bedroom Four

With a double glazed window to the front and a gas central heated radiator.

Bathroom

A modern fitted bathroom suite to comprise a bath with mixer taps, shower cubicle, his and hers sinks, low level W.C, gas central heated radiator and a double glazed window to the side.

Rear Garden

A spacious rear garden with a concrete print patio area, side access and lawn beyond.

Property details approval form

6 Woodward Street, West Bromwich, West Midlands, England, B71 4AP

Date: 01 July 2026

Property Ref and Version: WBW311527 - 0002

○ Room Description

Property details approval form

6 Woodward Street, West Bromwich, West Midlands, England, B71 4AP

Date: 01 July 2026

Property Ref and Version: WBW311527 - 0002

○ Room Description

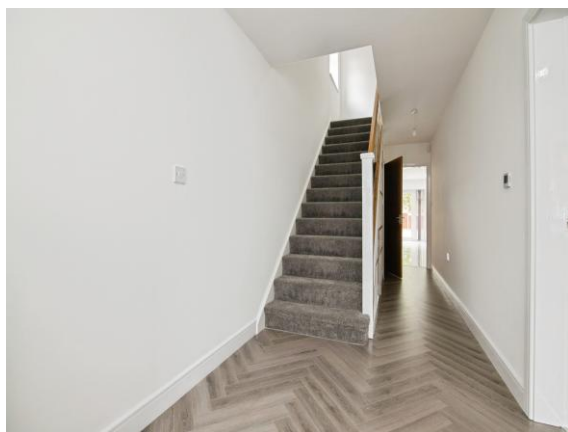
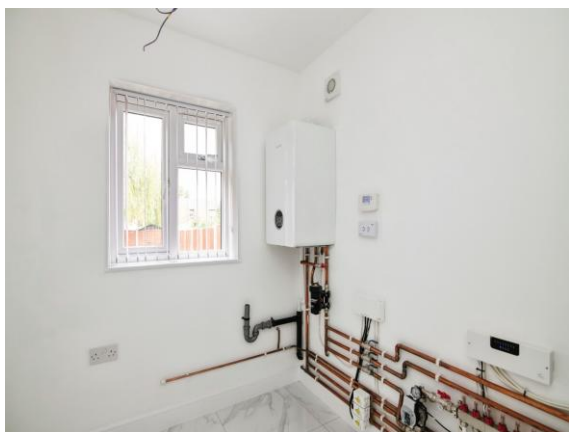
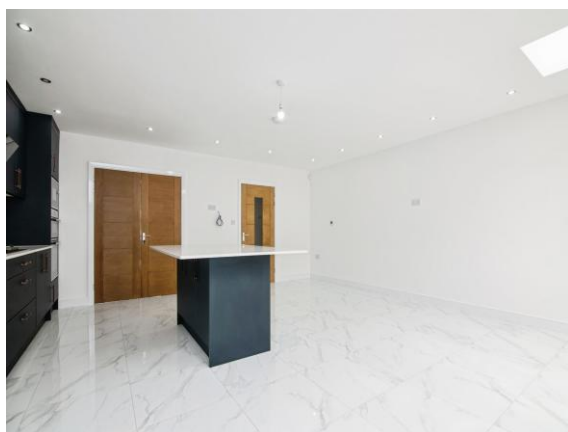
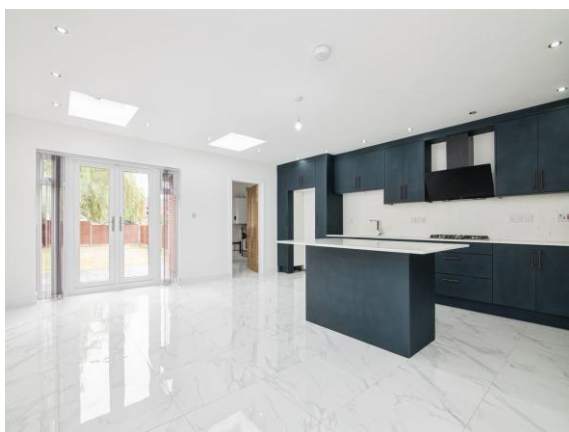
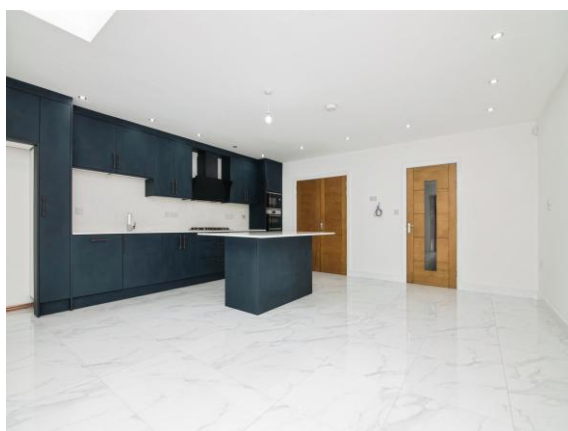
Property details approval form

6 Woodward Street, West Bromwich, West Midlands, England, B71 4AP

Date: 01 July 2026

Property Ref and Version: WBW311527 - 0002

○ Property Images



Property details approval form

6 Woodward Street, West Bromwich, West Midlands, England, B71 4AP

Date: 01 July 2026

Property Ref and Version: WBW311527 - 0002

○ Property Images



Property details approval form

6 Woodward Street, West Bromwich, West Midlands, England, B71 4AP

Date: 01 July 2026

Property Ref and Version: WBW311527 - 0002

○ Property Images



Property details approval form

6 Woodward Street, West Bromwich, West Midlands, England, B71 4AP

Date: 01 July 2026

Property Ref and Version: WBW311527 - 0002

○ Floor Plan



Total floor area 141.7 m² (1,525 sq.ft.) approx

This floor plan is for illustrative purposes only. It is not drawn to scale. Any measurements, floor areas (including any total floor area), openings and orientation are approximate. No details are guaranteed, they cannot be relied upon for any purpose and they do not form part of any agreement. No liability is taken for any error, omission or misstatement. A party must rely upon its own inspection(s). Powered by www.propertybox.io



○ Approval

Signature

Date

	Signature	Date
Taylor Silk	T. Silk	01.07.2026
Mr T.S. Dhanda		