



## Brigadier Walk, London, SE18 6NU

**£475 Per Week**

EX SHOW FLAT AVAILABLE TO LET

ONE BEDROOM APARTMENT IN HENNESSEY APARTMENTS  
ROYAL ARSENAL SE18  
11TH FLOOR  
538 SQUARE FEET  
BALCONY WITH DIRECT RIVER VIEWS  
DUAL ASPECT BEDROOM

FLAT HAS BEEN INTERIOR DESIGNED & FURNISHED TO A VERY HIGH STANDARD BY DEVELOPER  
FULL USE OF THE WATERSIDE CLUB POOL, GYM & SPA

AVAILABLE JUNE 8TH  
FURNISHED

- EX SHOW FLAT FOR LET
- INTERIOR DESIGNED THROUGHOUT
- CONCIERGE & WATERSIDE CLUB IN SAME BUILDING
- ONE BEDROOM 11TH FLOOR
- PART OF "ROYAL ARSENAL" SE18
- ON SITE STATION & RESTAURANTS/BARS
- SET OVER 538 SQUARE FEET
- SOUTH FACING BALCONY
- DUAL ASPECT BEDROOM
- FULL USE OF POOL, JACUZZI, SPA, GYM & CINEMA ROOM

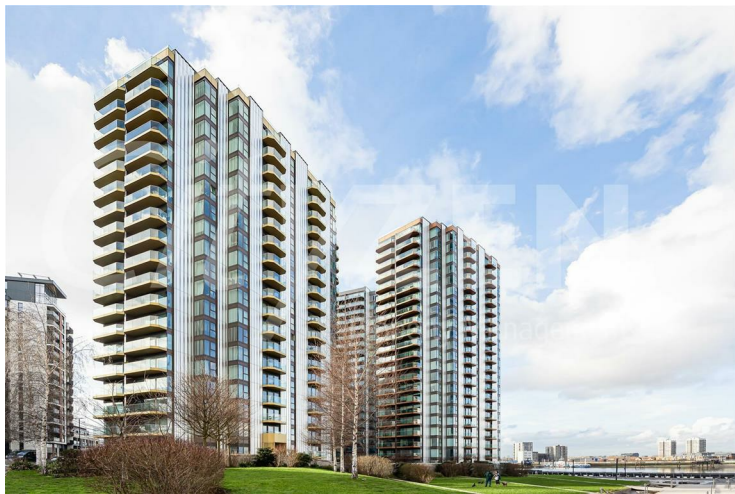
# Brigadier Walk, London, SE18 6NU



HENNESSEY APTS



RECEPTION



HENNESSEY APTS



BEDROOM



HENNESSEY APTS



BALCONY

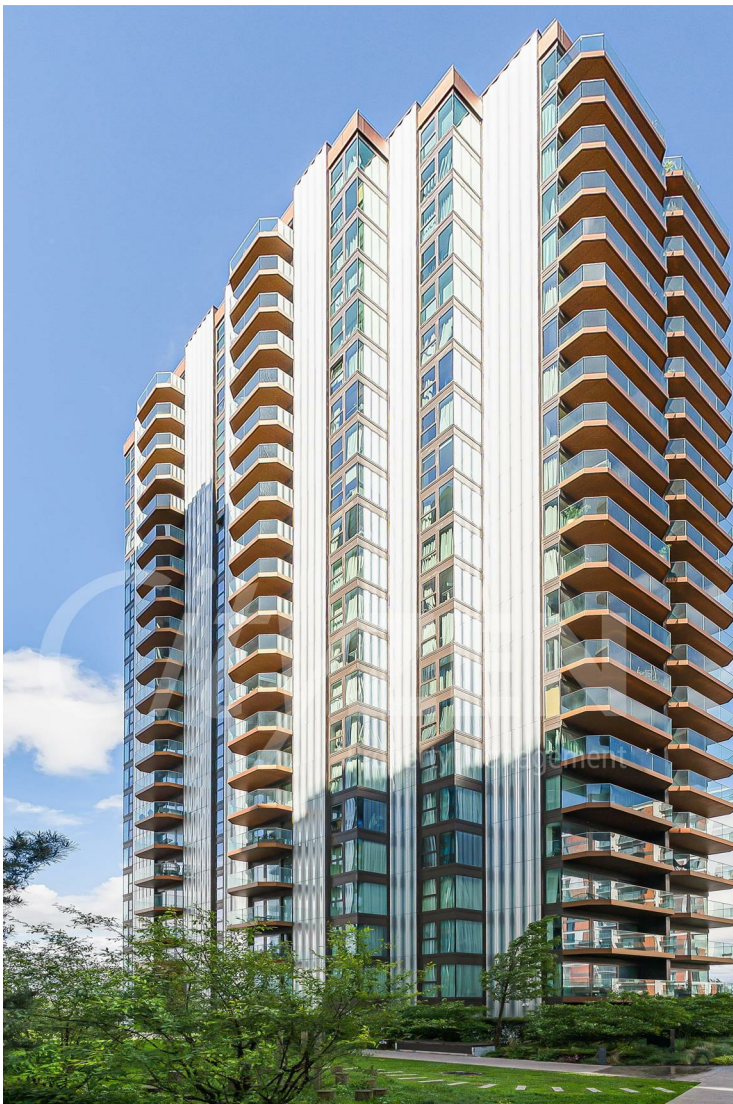
# Brigadier Walk, London, SE18 6NU



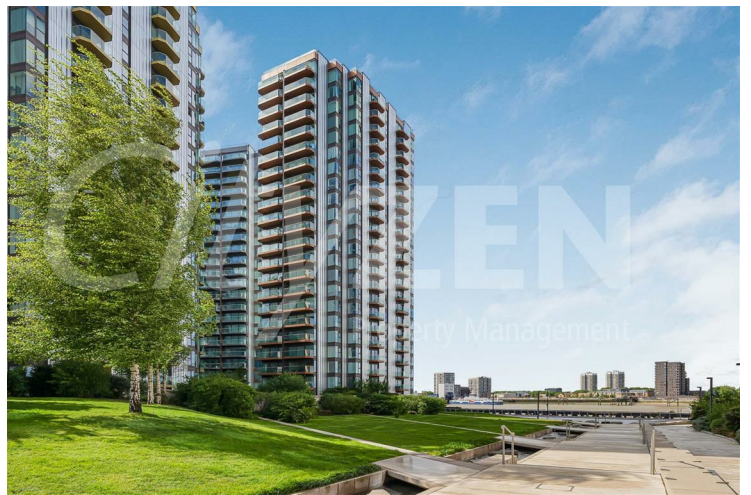
BALCONY



HENNESSEY APTS



HENNESSEY APTS



HENNESSEY APTS

**Brigadier Walk, London, SE18 6NU**



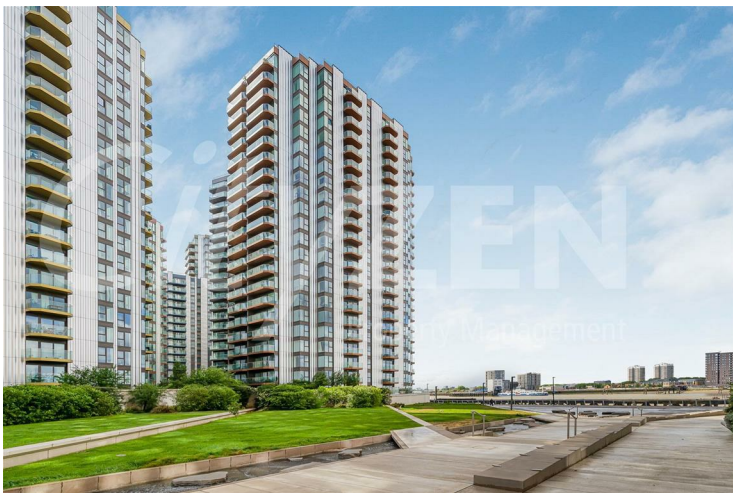
**HENNESSEY APTS**



**BEDROOM**



**BEDROOM**



**HENNESSEY APTS**



**BEDROOM**

**Brigadier Walk, London, SE18 6NU**



**BEDROOM**



**HALLWAY**



**BATHROOM**



**RECEPTION**



**BATHROOM**

# Brigadier Walk, London, SE18 6NU



RECEPTION



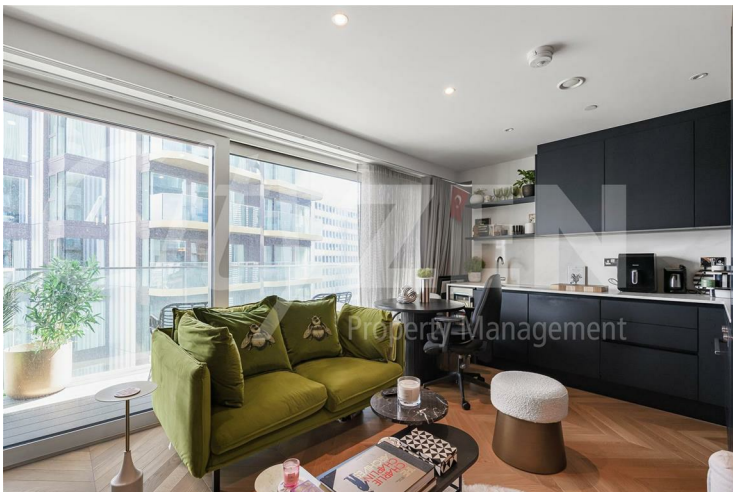
RECEPTION



RECEPTION



RECEPTION



RECEPTION



RECEPTION

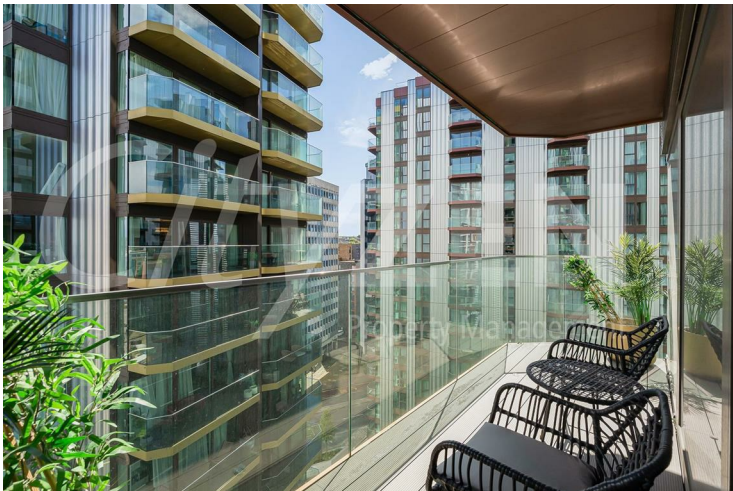
## Brigadier Walk, London, SE18 6NU



RECEPTION

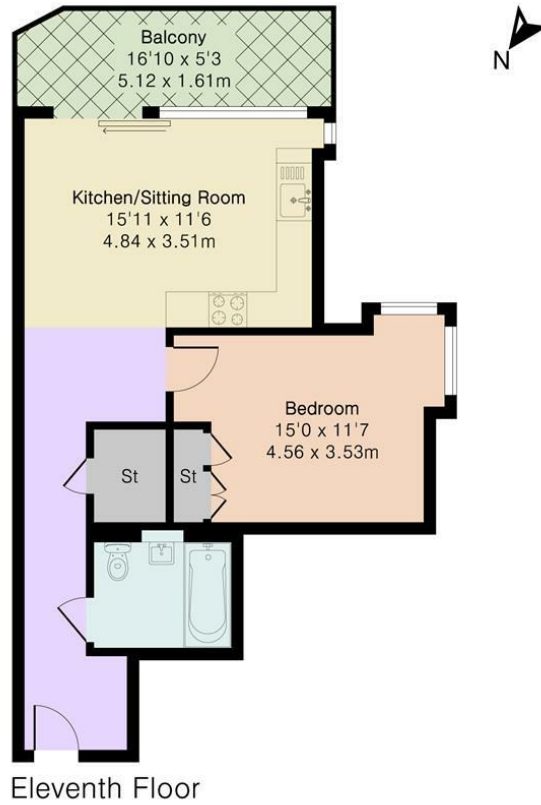


RECEPTION



BALCONY

Approximate Gross Internal Area 538 sq ft - 50 sq m



Floor plan produced in accordance with RICS Property Measurement 2nd Edition. Although Pink Plan Ltd ensures the highest level of accuracy, measurements of doors, windows and rooms are approximate and no responsibility is taken for error, omission or misstatement. These plans are for representation purposes only and no guarantee is given on the total square footage of the property within this plan. The figure icon is for initial guidance only and should not be relied on as a basis of valuation.



Energy Efficiency Rating

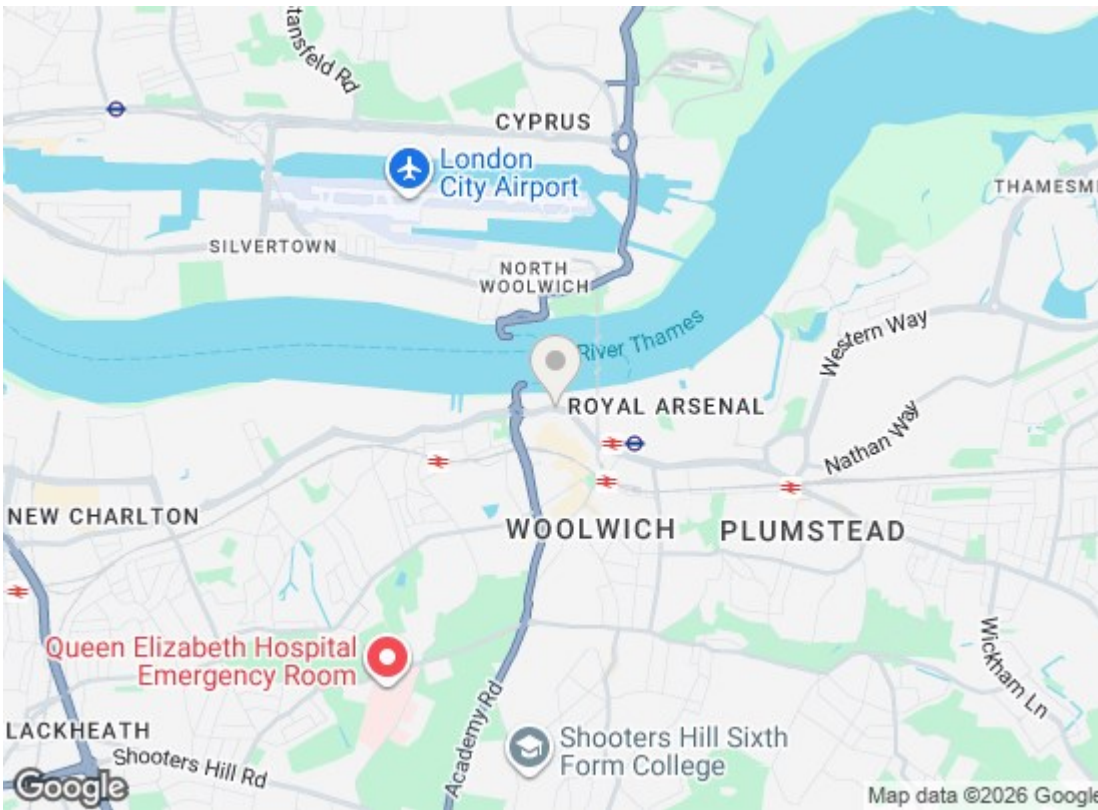
	Current	Potential
Very energy efficient - lower running costs		
(92 plus) <b>A</b>		
(81-91) <b>B</b>	<b>85</b>	<b>85</b>
(69-80) <b>C</b>		
(55-68) <b>D</b>		
(39-54) <b>E</b>		
(21-38) <b>F</b>		
(1-20) <b>G</b>		
Not energy efficient - higher running costs		

**England & Wales** EU Directive 2002/91/EC

Environmental Impact (CO<sub>2</sub>) Rating

	Current	Potential
Very environmentally friendly - lower CO <sub>2</sub> emissions		
(92 plus) <b>A</b>		
(81-91) <b>B</b>		
(69-80) <b>C</b>		
(55-68) <b>D</b>		
(39-54) <b>E</b>		
(21-38) <b>F</b>		
(1-20) <b>G</b>		
Not environmentally friendly - higher CO <sub>2</sub> emissions		

**England & Wales** EU Directive 2002/91/EC



We have prepared these property particulars as a general guide to a broad description of the property. They are not intended to constitute part of an offer or contract. We have not carried out a structural survey and the services, appliances and specific fittings have not been tested. All photographs, measurements, floorplans and distances referred to are given as a guide only and should not be relied upon for the purchase of carpets or any other fixtures or fittings. Lease details, service charges and ground rent (where applicable) and council tax are given as a guide only and should be checked and confirmed by your Solicitor prior to exchange of contracts.