



Turnham Road, SE4

£425,000

A well presented two double bedroom apartment set within the popular Edgehill Lodge, SE4, offering balanced proportions, excellent natural light and a private balcony. The property is in very good condition throughout and offers a well laid out interior extending to approximately 719 sq ft, with a bright reception room that opens directly onto the balcony, creating a seamless indoor outdoor feel.

Edgehill Lodge is ideally positioned for access to a number of outstanding green spaces including Hilly Fields, Blythe Hill Fields, Peckham Rye Park and the charming Honor Oak Recreation Ground, offering open views, walking routes and outdoor leisure space right on your doorstep. The location also provides excellent transport links and local amenities nearby.

Features

- Two Double Bedrooms
- Apartment
- Private Balcony
- Excellent Conditions
- Overlooking Green Spaces
- Walking Distance To Crofton Park Station
- Cul de Sac Location

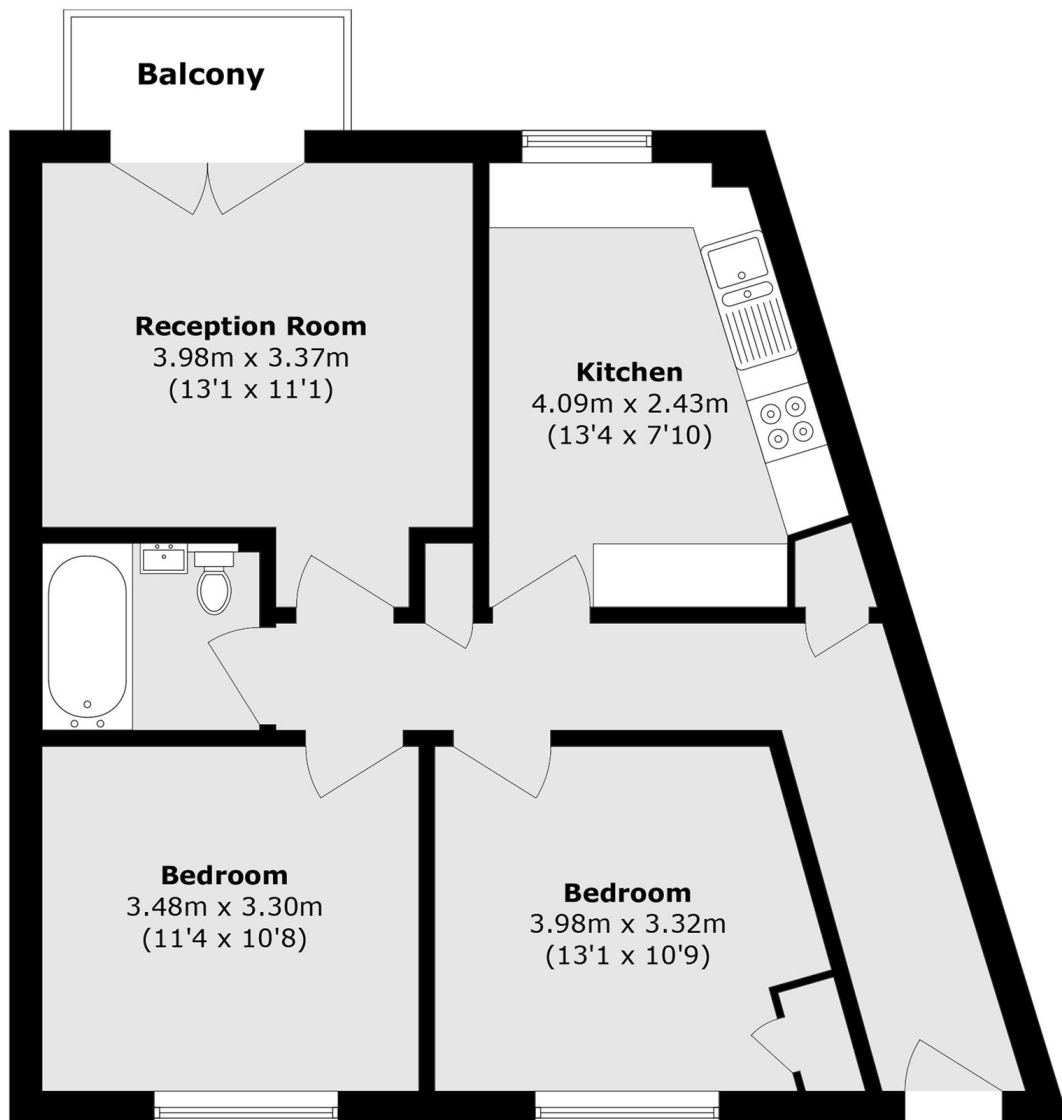


Turnham Road, SE4

A key selling point of this flat is the presence of two genuinely large double bedrooms, both generous in size and ideal for sharers, young families or those working from home who require proper space rather than compromise. The separate kitchen is well maintained and functional, while the bathroom is neatly presented and in keeping with the overall condition of the property.



Turnham Road, London, SE4



Total area (approx.): 66.8 sq. m (719.0 sq. ft)

Balcony area (approx.): 2.6 sq. m (27.9 sq. ft)