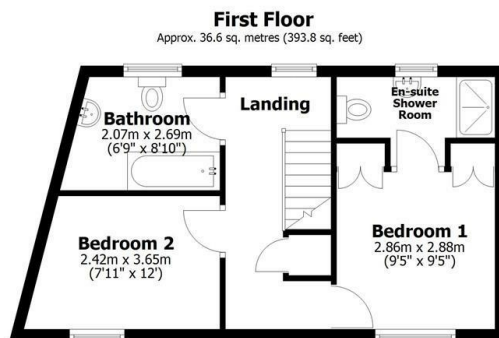
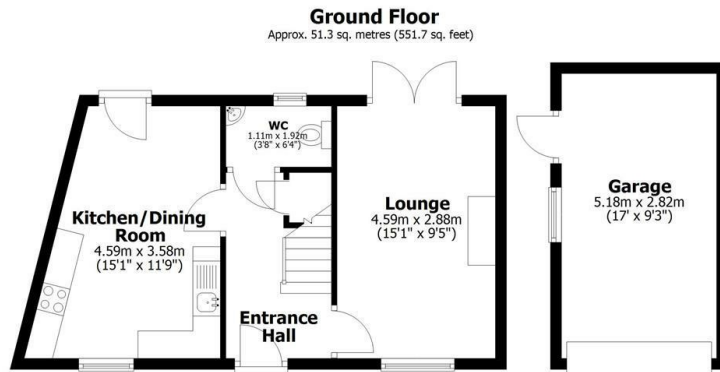




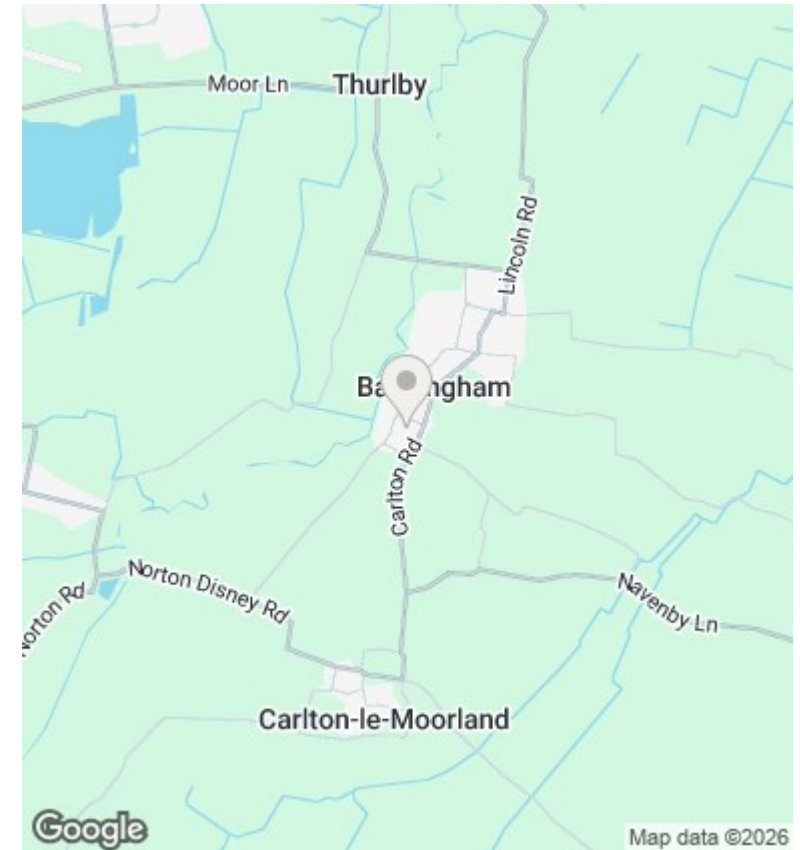
9 Manor Paddocks, Bassingham, Lincoln, LN5 9GW

Asking Price £215,000

- 2 Bed Semi Detached House
- Downstairs WC
- Rear Garden
- Council Tax Band B
- Kitchen / Dining Room
- Ensuite Shower to Master Bedroom
- Electric Central Heating
- Lounge
- Garage and Driveway Parking
- EPC Rating D



Total area: approx. 87.8 sq. metres (945.5 sq. feet)



Directions

Viewings

Viewings by arrangement only. Call 01522 396059 to make an appointment.

Council Tax Band

C

EPC Rating:

D

Energy Efficiency Rating		Current	Potential
<i>Very energy efficient - lower running costs</i>			
(92 plus)	A		
(81-91)	B		
(69-80)	C		76
(55-68)	D	59	
(39-54)	E		
(21-38)	F		
(1-20)	G		
<i>Not energy efficient - higher running costs</i>			
England & Wales		EU Directive 2002/91/EC	