

## Adam Close, London – NW7

£375,000 Leasehold

**\*\*CHAIN FREE\*\*** A unique 1 bedroom flat situated in this small block built by Linden Homes within the ever popular Millbrook Park development. The property benefits from its own spacious entrance on the ground floor and a private terrace on the first floor. On the second (top) floor there is a near-26ft reception room with open-plan kitchen and direct access to a second private terrace. Further features include fitted wardrobes, a contemporary bathroom, extensive storage, space for a study area in the hallway and a covered parking space. Mill Hill East Tube station is just 0.5 miles away with a Waitrose supermarket and a Virgin Active gym a short walk further.

Lease: Approx. 111 years Service Charge: Approx. £1430 per annum inclusive of ground rent

Council Tax band: D

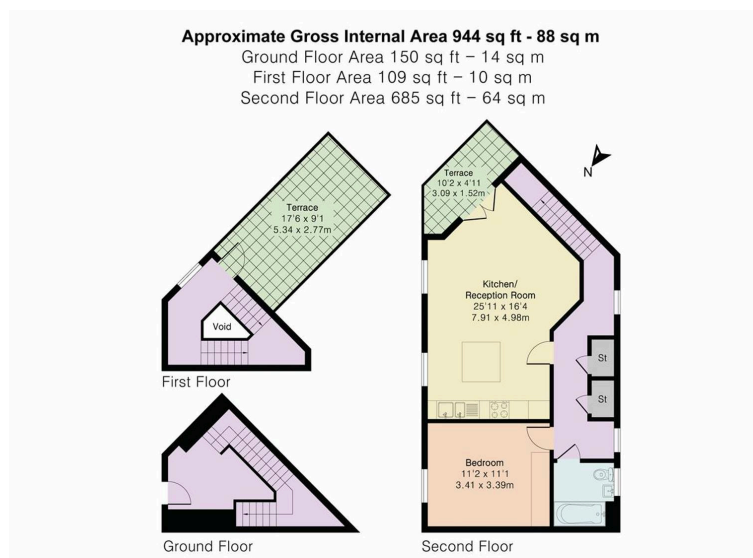
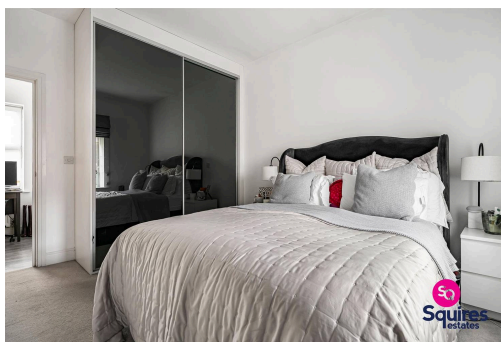
Tenure: Leasehold

EPC Energy Efficiency Rating: C

EPC Environmental Impact Rating:



- Unique purpose built flat
- 1 bedroom
- Private entrance
- 2 private terraces
- Covered off street parking
- Extensive storage
- Close to Tube
- Chain free
- Spacious accommodation
- Close to supermarket and gym



  
**Squires**  
estates

[www.squiresestates.co.uk](http://www.squiresestates.co.uk)

 PINK PLAN

Floor plan produced in accordance with RICS Property Measurement 2nd Edition. Although Pink Plan Ltd ensures the highest level of accuracy, measurements of doors, windows and rooms are approximate and no responsibility is taken for error, omission or misstatement. These plans are for representation purposes only and no guarantee is given on the total square footage of the property within this plan. The figure icons is for initial guidance only and should not be relied on as a basis of valuation.

  
**Squires**  
estates