



**Guide Price**  
**£510,000**

**Freehold**

4x  2x  1x 

**Bedford Road, Basildon,  
Essex, SS15**

**OVER 60?**

Secure this property  
for up to **59% less!**

 **DOUGLAS  
ALLEN**  
Helping you move forwards



## Main features

- 4 bedroom very well presented detached house
- Large lounge perfect for family living
- Separate dining room
- Ground floor cloakroom and shower room
- Driveway parking

## Accommodation

### GROUND FLOOR

- Entrance Hallway
- Cloakroom
- Shower Room
- Dining Room : 12'4 x 11'4 (3.76m x 3.46m)
- Lounge: 20'6 x 13'1 (6.25m x 3.99m)
- Kitchen: 12'7 x 9'3 (3.84m x 2.82m)

### FIRST FLOOR

- Landing
- Bedroom 1: 13'5 x 9'3 (4.09m x 2.82m)
- Bedroom 2: 10'9 x 10'4 (3.28m x 3.15m)
- Bedroom 3: 11'6 x 8'6 (3.51m x 2.59m)
- Bedroom 4: 11'7 x 11'6 (3.53m x 3.51m)
- Bathroom

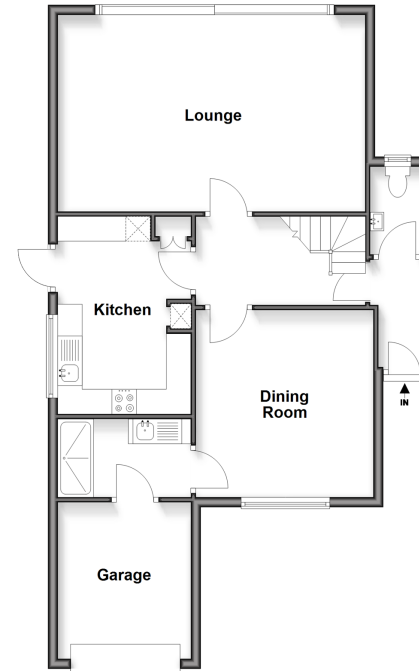
### OUTSIDE

- Rear Garden
- Garage
- Driveway

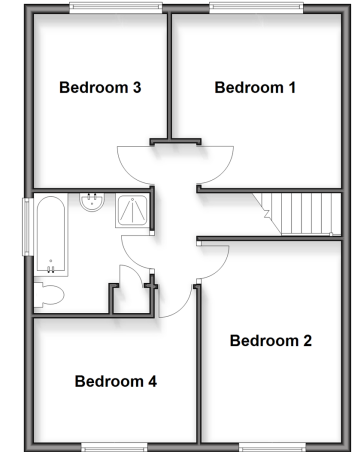
## Call Basildon - 01268 293993 ■ [douglasallen.co.uk](http://douglasallen.co.uk)

- A private rental licensing scheme applies to some properties in this area, please check with the Local Authority before proceeding
- Legal advice should be taken to verify fixtures/fittings, planning, alterations and/or lease details
- Appliances & services are untested, dimensions are approximate and floor plans are not to scale
- Through a Homewise Home For Life Plan people aged 60+ can secure this property for up to 59% less, by purchasing a Lifetime Lease

Ground Floor  
Approx. 75.5 sq. metres (813.1 sq. feet)



First Floor  
Approx. 54.5 sq. metres (587.0 sq. feet)



50509457/20260202/KM/GW