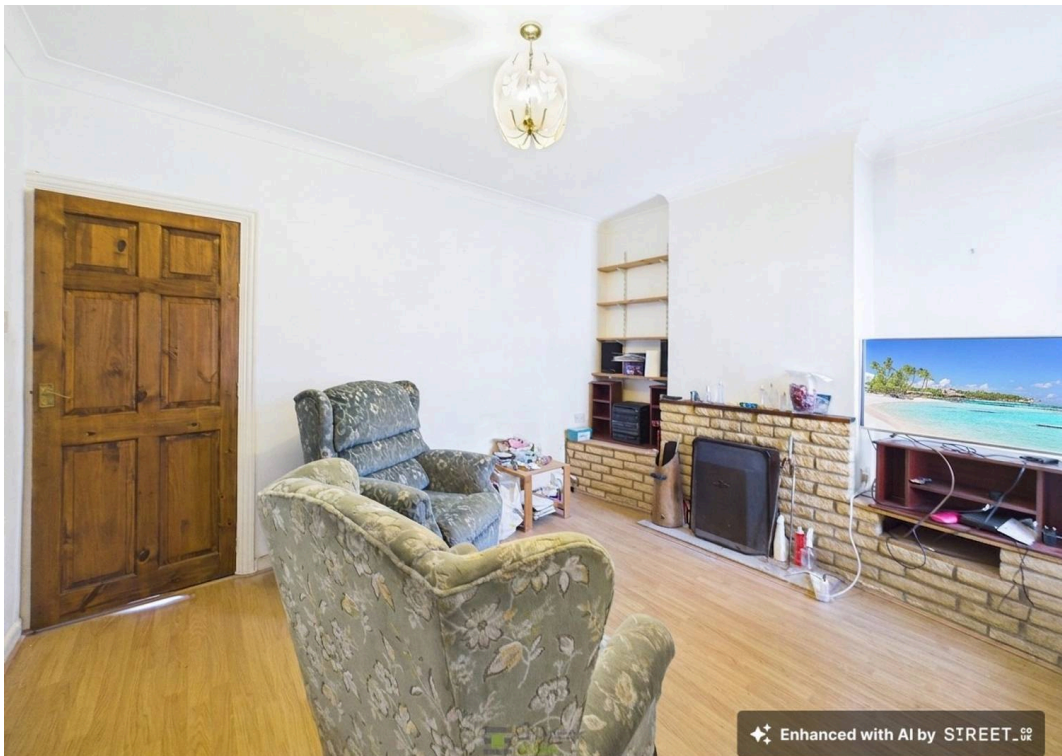




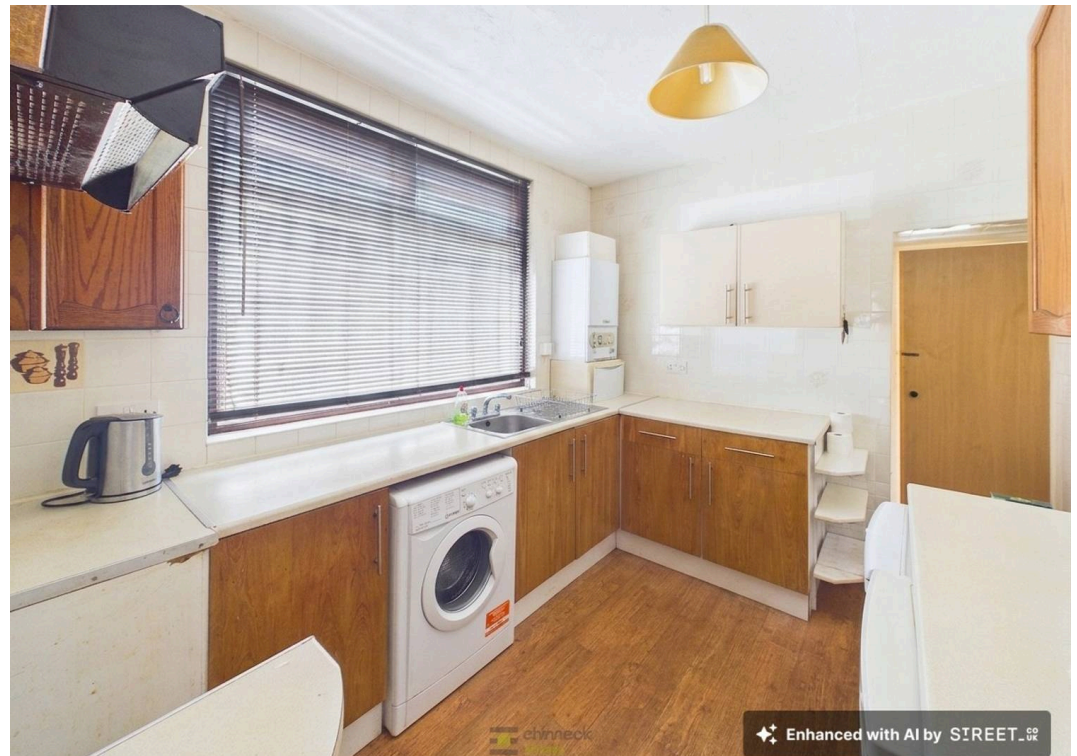
88 Station Road, Portsmouth

Guide Price £170,000

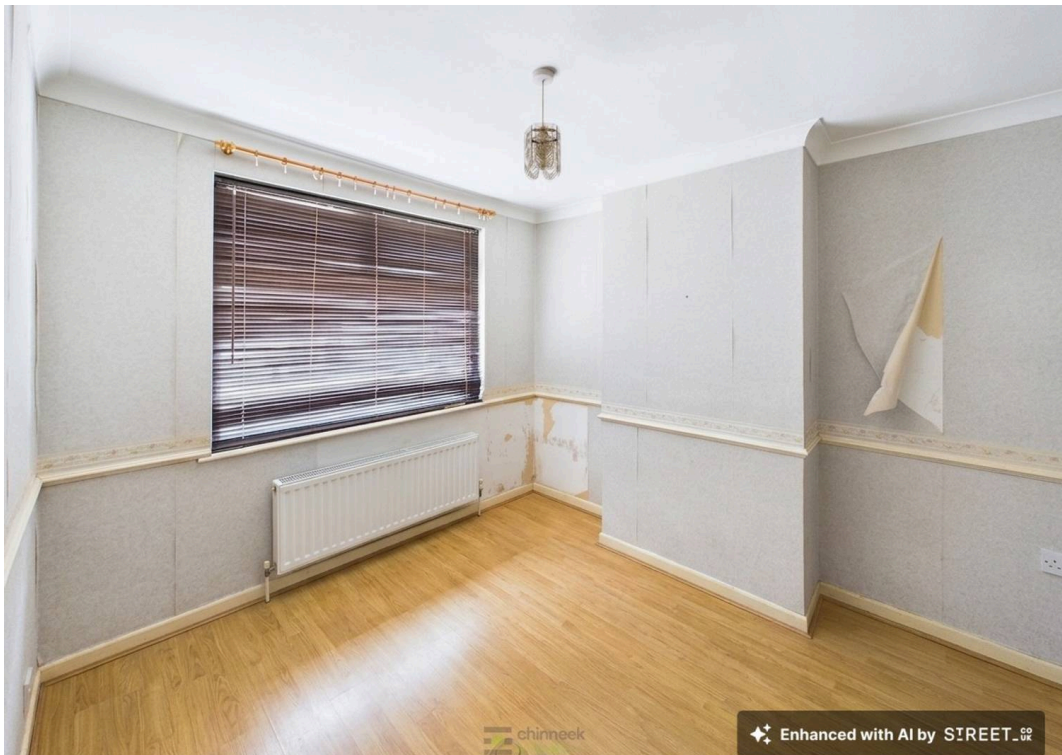




Enhanced with AI by SIREET .co.uk



Enhanced with AI by SIREET .co.uk



Enhanced with AI by SIREET .co.uk



chinneck

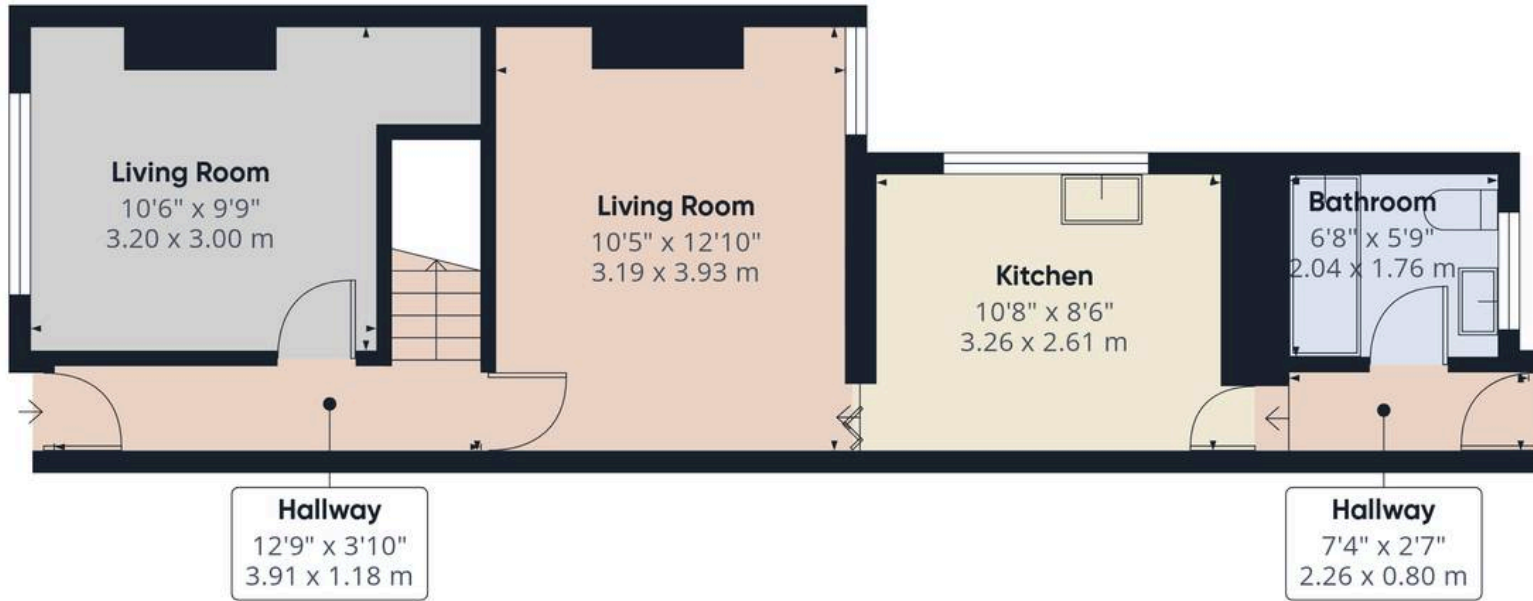
88 Station Road

Portsmouth

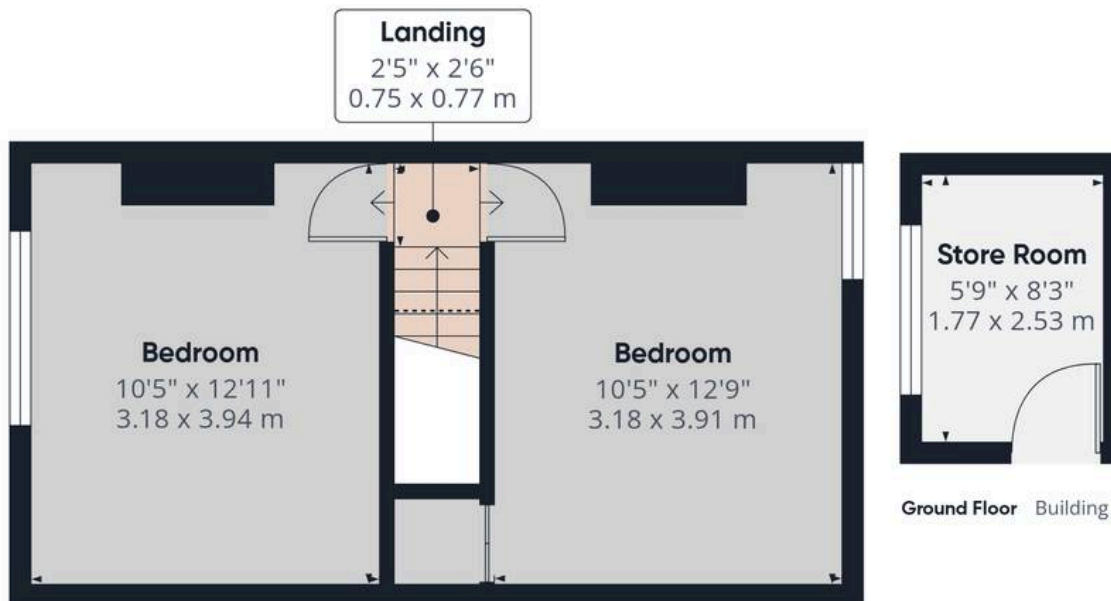
Situated in a highly sought-after central location, this well-presented two-bedroom terraced home offers comfort, practicality and exceptional convenience, making it an ideal choice for first-time buyers, young professionals and investors alike. Inside, you'll find two versatile reception rooms, a functional kitchen with ample storage and workspace, and two generous bedrooms offering flexible accommodation. The easy-maintenance rear garden is complemented by a useful brick-built store, providing excellent additional storage. Perfectly positioned within walking distance of local shops, cafés, schools and everyday amenities, the property also enjoys close proximity to the popular Great Salterns Recreational Ground, offering plenty of green space for leisure and outdoor activities. Combining character, flexibility and a fantastic location, this attractive home presents an excellent opportunity for those looking to step onto the property ladder or add a desirable property to their investment portfolio.

Material Information • Tenure: Freehold • Council Tax: Band **B** • Electricity: Mains Supply • Heating: Gas • Water Supply: Mains Supply • Sewage: Mains Supply • Broadband: Standard, Superfast and Ultrafast Fibre are all available in this area • Parking: On Street • Mobile: Ofcom official website checker states that EE, Vodafone, O2 and Three available in the area • Flood Risk: Low Risk





Ground Floor Building 1



Ground Floor Building 2

Floor 1 Building 1

Approximate total area⁽¹⁾

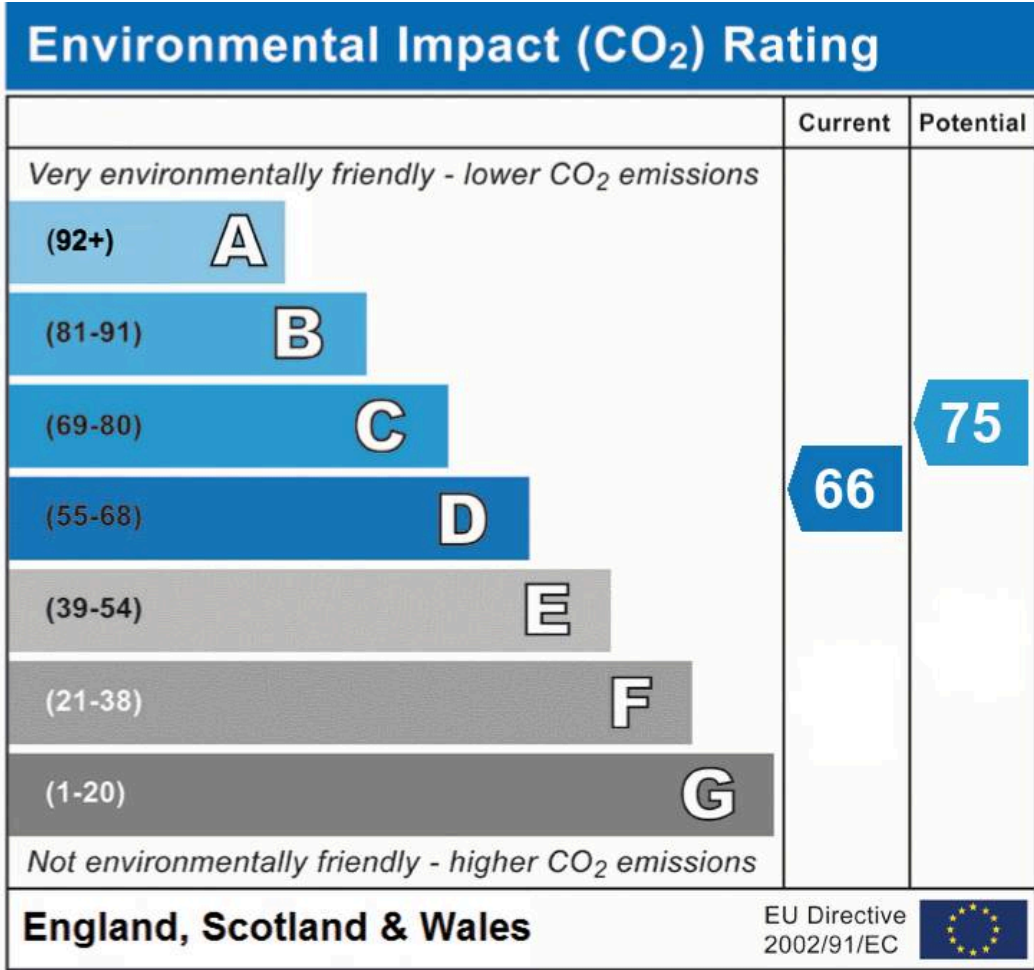
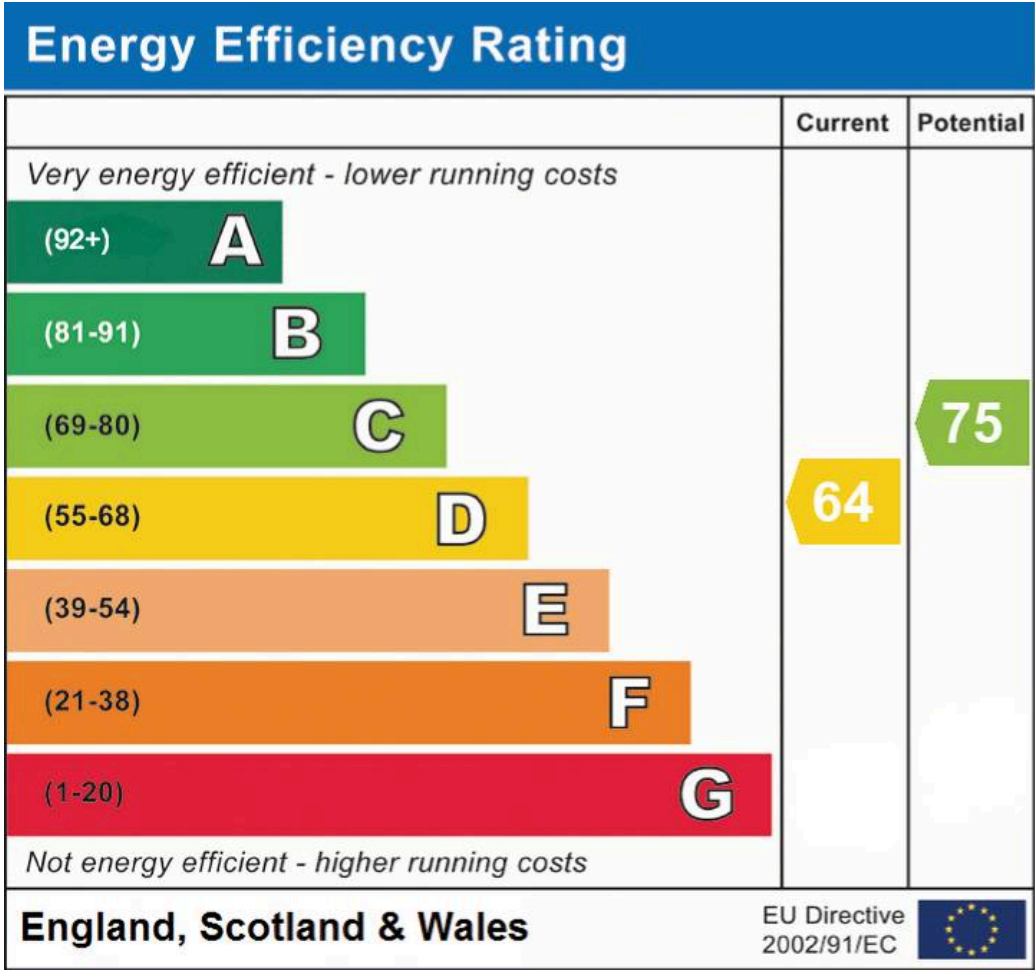
765 ft²
71.1 m²

(1) Excluding balconies and terraces

Reduced headroom
----- Below 5 ft/1.5 m

Calculations reference the RICS IPMS 3C standard. Measurements are approximate and not to scale. This floor plan is intended for illustration only.

GIRAFFE360



Chinneck Shaw

Bridge House, Milton Road, Portsmouth – PO3 6AN

023 9282 6731

hello@chinneckshaw.co.uk

www.chinneckshaw.co.uk/

Chinneck Shaw, Bridge House, Milton Road, PO3 6AN Consumer Protection from Unfair Trading Regulations 2008: These details are for guidance only and complete accuracy cannot be guaranteed. If there is any point which is of particular importance, verification should be obtained. They do not constitute a contract or part of a contract. All measurements are approximate. No guarantee can be given with regard to planning permissions or fitness for purpose. No apparatus, equipment, fixture or fitting has been tested. Items shown in the photographs are NOT necessarily included. Interested Parties are advised to check availability and make an appointment to view before travelling to see a property.