



**67 Randolph Avenue  
London, W9 1DW**

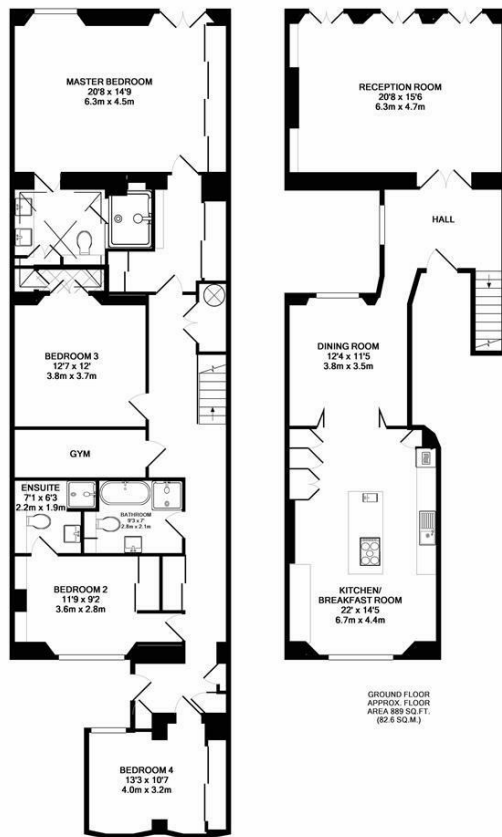
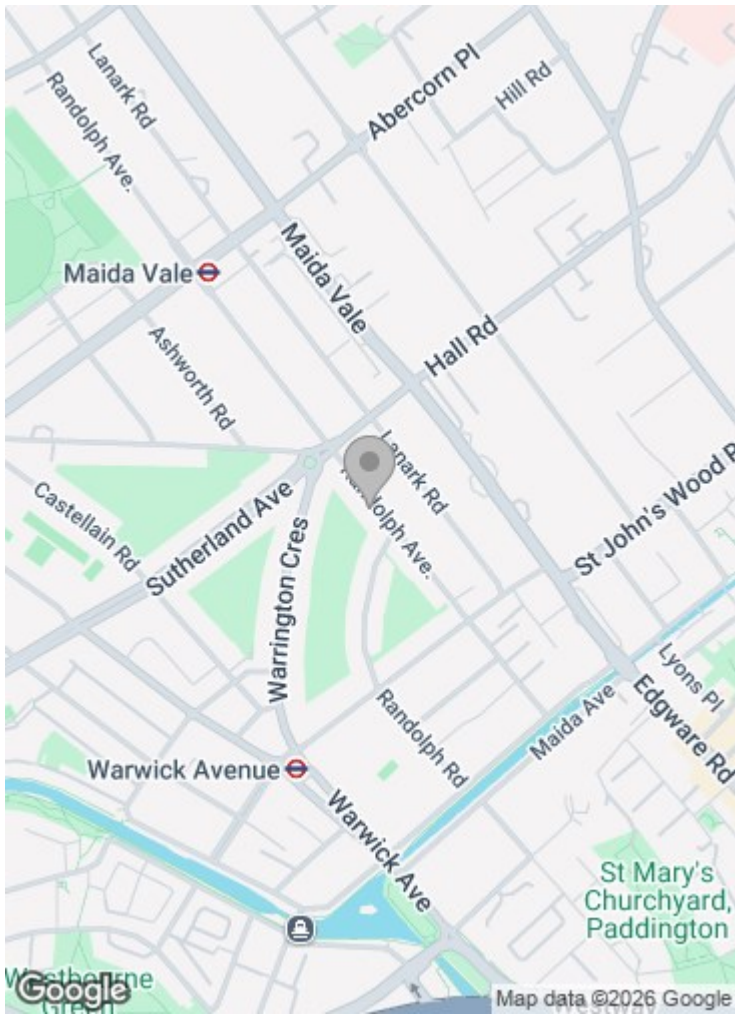
**£3,750 per week (+ admin fees)**

\*\*\*\*\*BRAND NEW EXCLUSIVE LISTING\*\*\*\*\*

Rarely are we able to bring such a unique property to the market as we are with this four bedroom three bathroom Raised Ground floor and Garden apartment with striking uninterrupted views across the one of London's award winning private garden squares. Set in a Grade II listed building, this stunning south facing apartment which is an owners own home has been renovated and architecturally designed from top to bottom, back to the brick and has one of the finest finishes you will see. The accommodation includes master bedroom and en suite bathroom and steam shower room with direct views and access to a private garden that leads on to the communal gardens, three further double bedrooms (one en-suite bathroom), family bathroom, large double reception with views and access to the communal gardens and full length floor to ceiling windows, large fully fitted Gaggenau kitchen and dining room, gym and wine cooler. Further features include Rako lighting and Sonos sound system. This is a simply magnificent property that is a must see.

Parking is available by separate negotiation.

Randolph Avenue is superbly located on the Crescent Garden which is directly accessible from the building and offers three and a half acres of superbly maintained gardens including a children's playground. Maida Vale or Warwick Avenue tube stations (Bakerloo Line) are both a short walk away as are the shops and cafes of the popular Clifton Road and Formosa Street.



LOWER GROUND FLOOR  
APPROX. FLOOR AREA 1389 SQ. FT. (129.9 SQ.M.)

RANDOLPH AVENUE W9  
TOTAL APPROX. FLOOR AREA 2278 SQ.FT. (211.6 SQ.M.)

Floorplans are for identification and guideline purposes only, not to scale. Compliant with RICS code of measuring practice. Floor plan supplied by Chaik Chak Limited. Made with Metrepro 10/2018

85 - 87 BAYHAM STREET  
LONDON NW1 0AG

45 CIRCUS ROAD  
LONDON NW8 9JH

T: +44 0207 1234 152  
info@phillipsharrod.com

Energy Efficiency Rating		Environmental Impact (CO <sub>2</sub> ) Rating	
Current	Target	Current	Target
A	B	64	64
B	C	64	64
C	D	64	64
D	E	64	64
E	F	64	64
F	G	64	64
G	H	64	64