



West Pike Fish Farm Cottages, Laddingford – ME18 6BH

Guide Price £725,000

bracketts
est. 1828



Believed to date from the circa 1450s, this exceptional attached former Wealden Hall House presents an extraordinarily rare opportunity to acquire a home of remarkable historical significance and enduring character. Occupying an idyllic plot of approximately a quarter of an acre on the edge of the picturesque village of Laddingford, the property enjoys an enviable rural setting with uninterrupted views across neighbouring orchards and open farmland, creating a wonderful sense of peace, privacy and timeless English countryside living. Beautifully arranged over three floors and linked by a handcrafted American oak staircase, the accommodation effortlessly combines centuries of architectural heritage with the comfort and flexibility required for modern family life. Throughout the home, an abundance of original period features have been carefully preserved, including exposed oak timbers, timber latch doors, an impressive inglenook-style fireplace and a breathtaking vaulted ceiling that serves as a striking reminder of the property's medieval origins.

Outside, the property continues to impress. A driveway, accessed via a right of way, leads to a detached garage with a generous studio above, offering superb versatility as a home office, artist's studio, gym or guest accommodation, subject to any necessary consents. The property's mature gardens around the property provide a series of delightful spaces in which to relax and entertain. A generous patio enjoys views across the gardens, while established planting, a productive vegetable garden, greenhouse, garden shed and ornamental pond combine to create a quintessential country garden. Adjacent to the property is a beautiful wildlife pond.





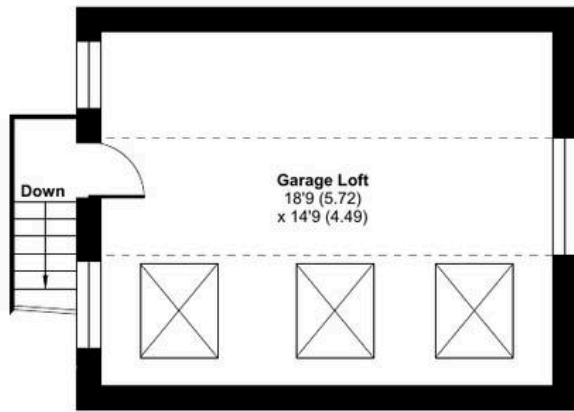
Pike Fish Lane, Laddingford, Maidstone, ME18

Approximate Area = 1450 sq ft / 134.7 sq m
 Limited Use Area(s) = 373 sq ft / 34.6 sq m
 Garages = 399 sq ft / 37 sq m
 Total = 2222 sq ft / 206.3 sq m

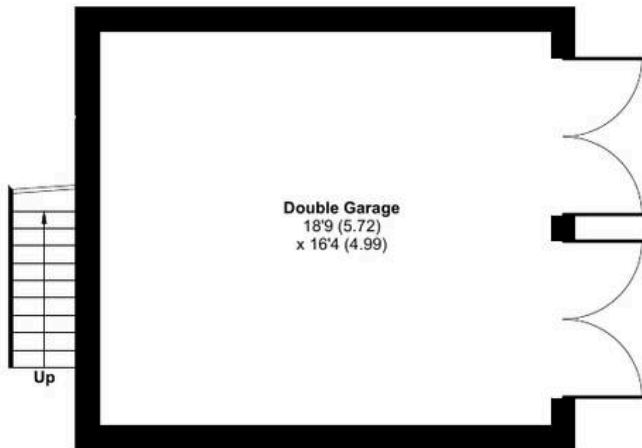
For identification only - Not to scale



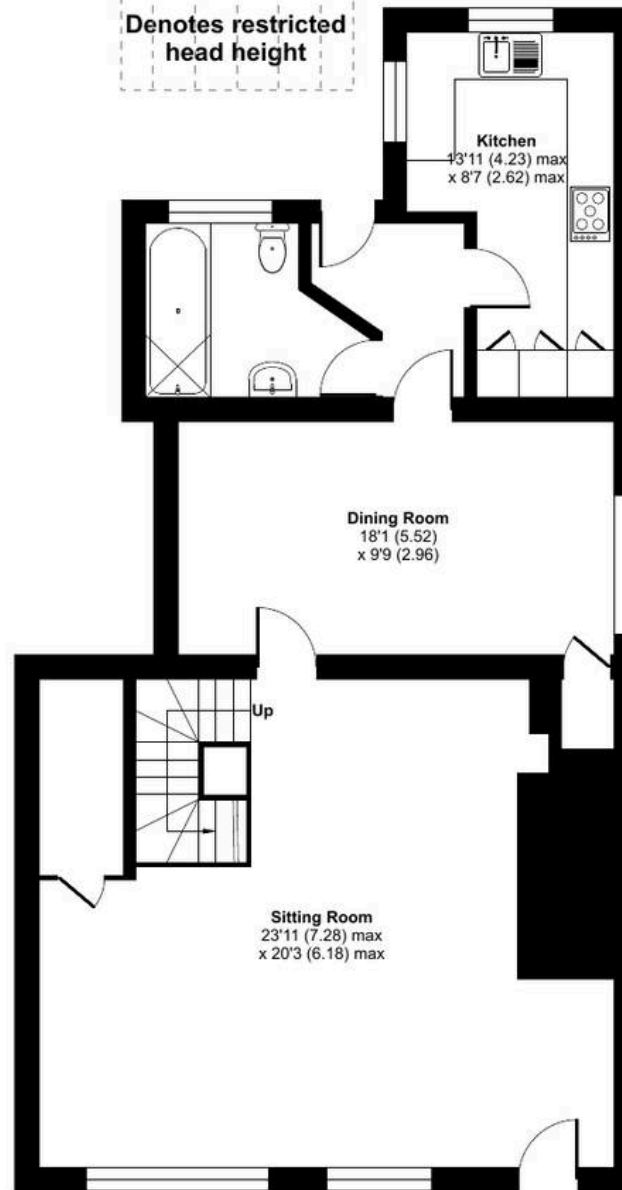
Denotes restricted head height



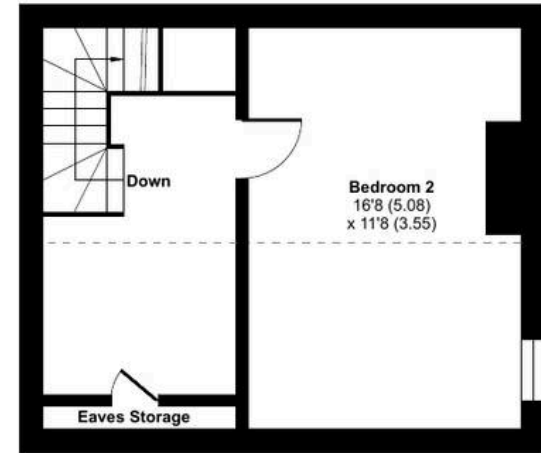
FIRST FLOOR GARAGE



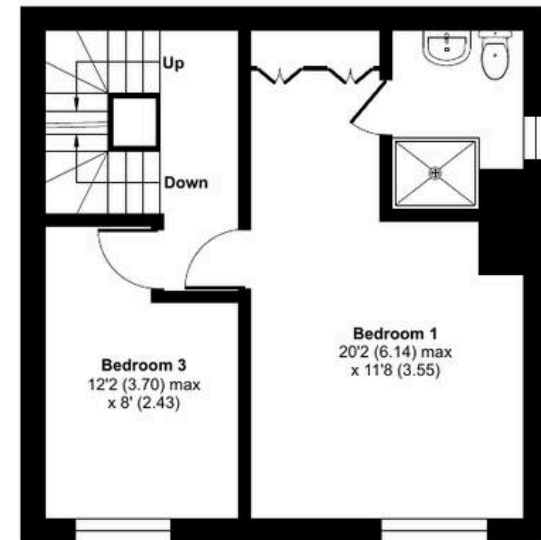
GROUND FLOOR GARAGE



GROUND FLOOR



SECOND FLOOR



FIRST FLOOR

